

LOHMANN BROWN-CAMPERA

LAYERS

Alternative Housing

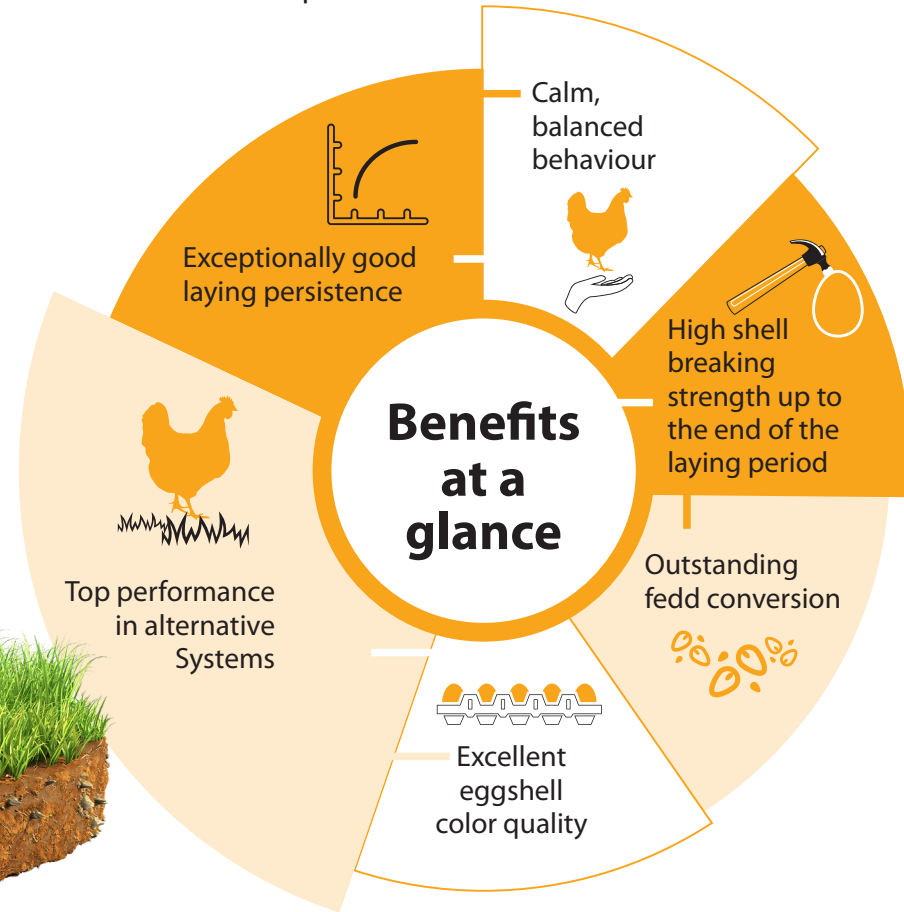


LOHMANN BROWN-CAMPERA is one of the fastest-growing layer varieties across Europe.

The robust hen shows a very productive laying performance and is well suited for alternative housing systems.



With its brown eggshell color, the layer is recommended for markets requiring a medium to large egg size.








Breeding for success... together!



LOHMANN
BREEDERS

LOHMANN BROWN-CAMPERA

PERFORMANCE DATA

Egg Production 	Age at 50% production	140 – 145 days
	Peak production	94 – 96 %
	Eggs per Hen Housed	
	in 72 weeks of age	320
	in 80 weeks of age	361
in 90 weeks of age	409	
Egg Mass per Hen Housed		
in 72 weeks of age	19.93 kg	
in 80 weeks of age	22.64 kg	
in 90 weeks of age	25.76 kg	
Average Egg Weight		
in 72 weeks of age	62.3 g	
in 80 weeks of age	62.7 g	
in 90 weeks of age	63.0 g	
Egg Characteristics 	Shell colour	attractive brown
	Shell breaking strength	>40 Newton
Feed Conversion Ratio 	2.15 – 2.25 kg / kg egg mass	
Body Weight 	at 17 weeks	1.42 kg
	at the end of production	2.05 kg
Liveability 	Rearing	98 – 99 %
	Laying period (72 weeks)	94 – 95 %
	Laying period (90 weeks)	91 – 92 %



06/21_V01-26

