

# LOHMANN BROWN-CLASSIC



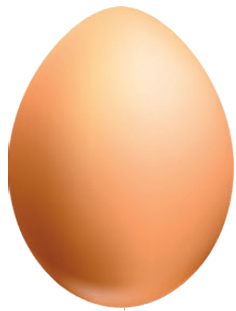
ENG

## LAYERS

### Alternative Housing



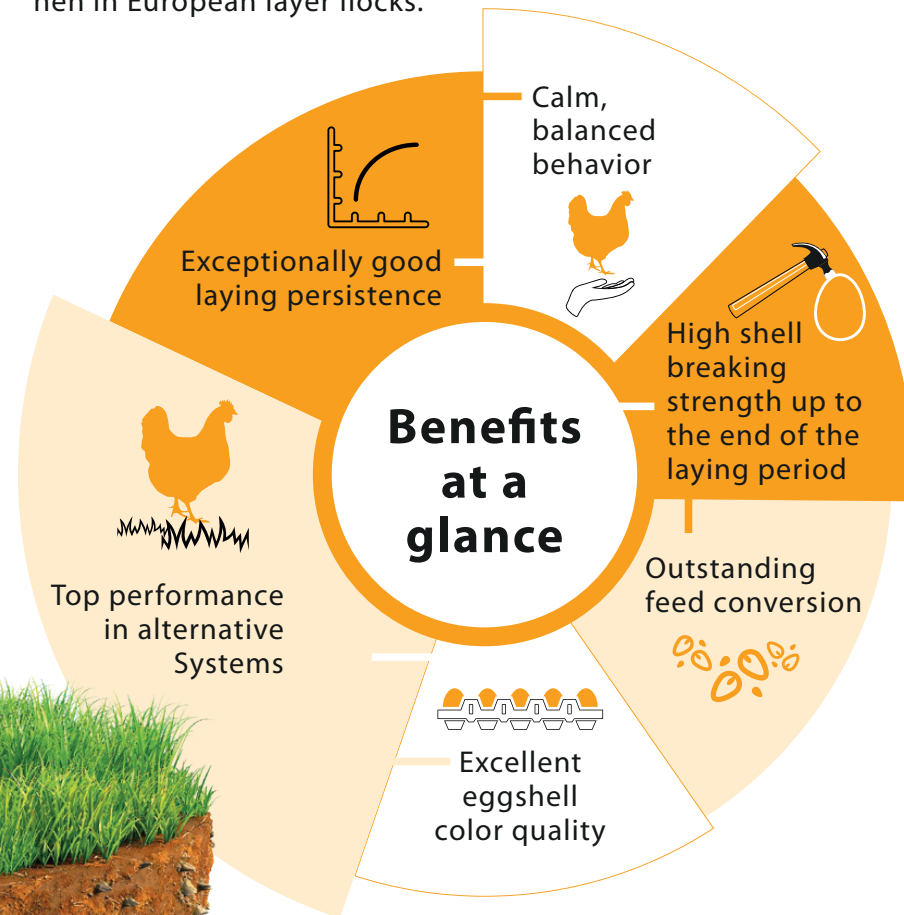
The robust hen shows a very productive laying performance and is well suited for alternative housing systems.



With its brown eggshell color, the layer is recommended for markets requiring a medium to large egg size.



LOHMANN BROWN-CLASSIC is the most frequently used laying hen in European layer flocks.








Breeding for success... together!



**LOHMANN**  
BREEDERS

# LOHMANN BROWN-CLASSIC

## PERFORMANCE DATA

Egg Production 	Age at 50 % production	140 – 145 days
	Peak production	94 – 96 %
	<b>Eggs per Hen Housed</b>	
	in 72 weeks of age	321
	in 80 weeks of age	363
	in 90 weeks of age	412
	<b>Egg Mass per Hen Housed</b>	
	in 72 weeks of age	20.32 kg
	in 80 weeks of age	23.13 kg
	in 90 weeks of age	26.39 kg
	<b>Average Egg Weight</b>	
	in 72 weeks of age	63.3 g
	in 80 weeks of age	63.7 g
	in 90 weeks of age	64.1 g
Egg Characteristics 	Shell colour	attractive brown
	Shell breaking strength	> 40 Newton
Feed Conversion Ratio 	2.15 – 2.25 kg / kg egg mass	
Body Weight 	at 17 weeks	1.42 kg
	at the end of production	2.05 kg
Liveability 	Rearing	98 – 99 %
	Laying period (72 weeks)	94 – 95 %
	Laying period (90 weeks)	91 – 92 %

06/21\_V01-25



LOHMANN BREEDERS GmbH | Am Seedeich 9–11 | 27472 Cuxhaven | Germany  
Phone +49 (0) 47 21/505-0 | Email [info@lohmnn-breeders.com](mailto:info@lohmnn-breeders.com) | [www.lohmnn-breeders.com](http://www.lohmnn-breeders.com)



**LOHMANN**  
BREEDERS