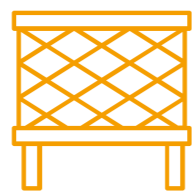


LOHMANN LSL-LITE

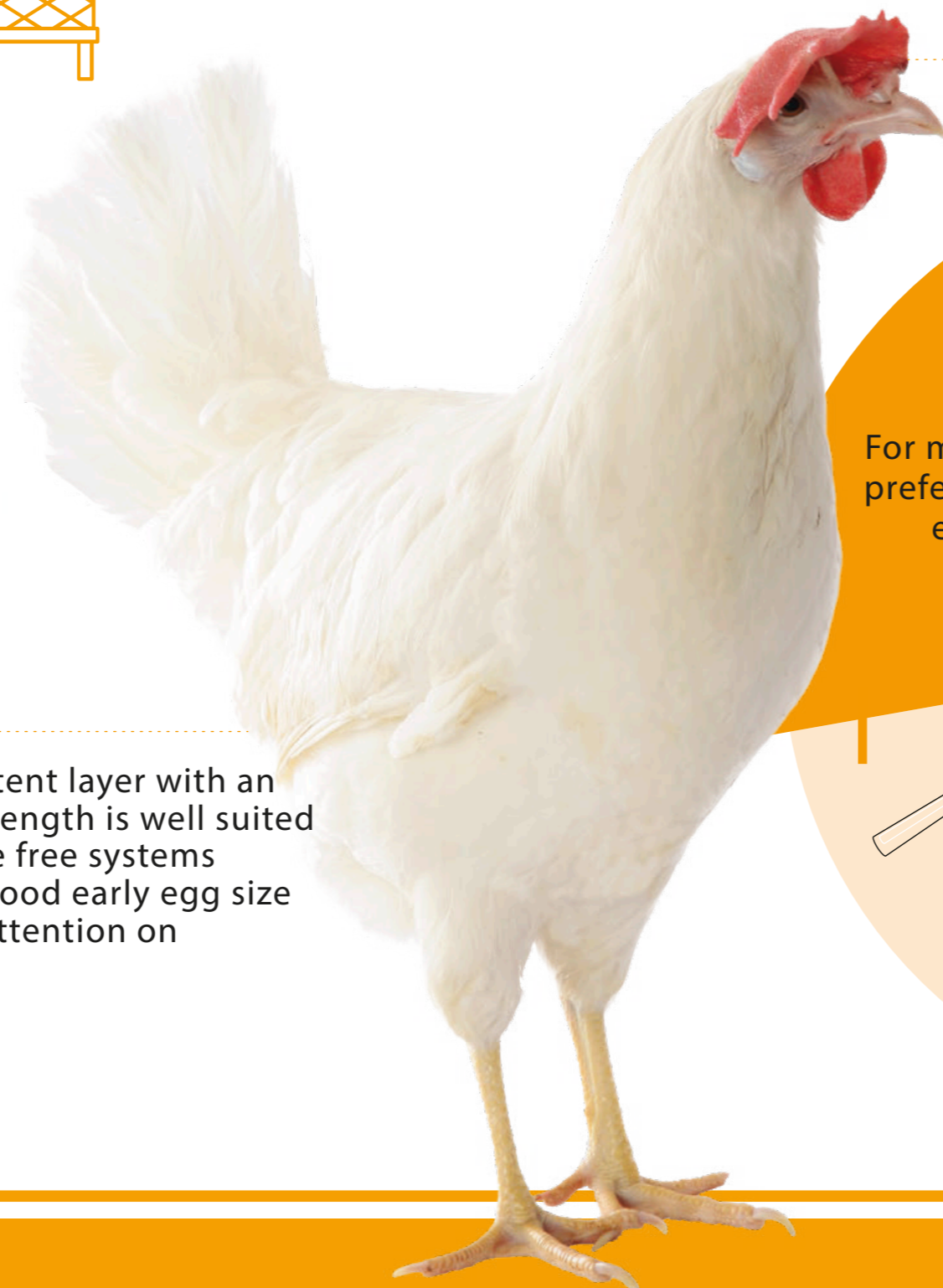
NORTH AMERICA

LAYERS

Cage Housing

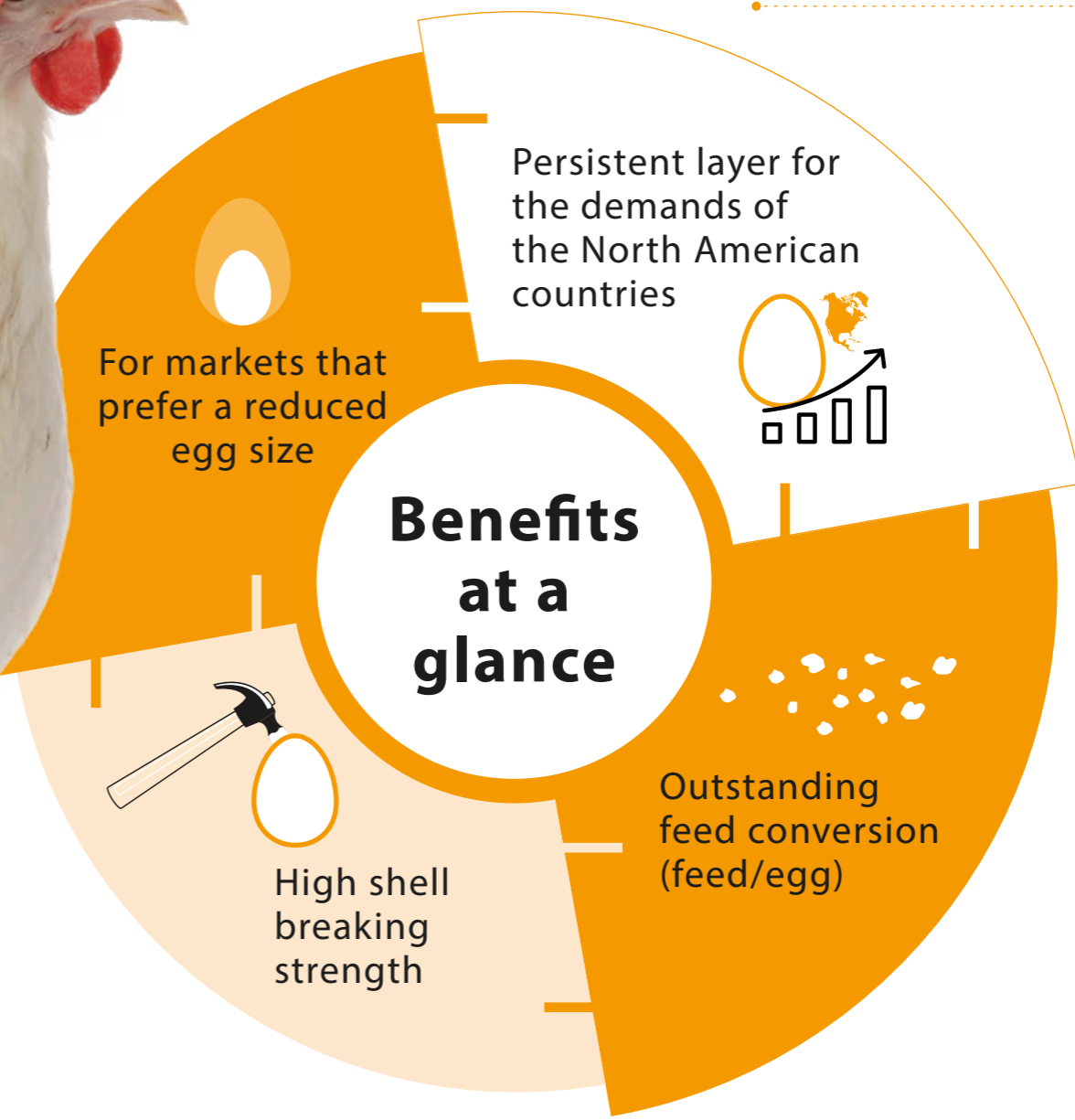


The highly persistent layer with an excellent shell strength is well suited in cages and cage free systems which require a good early egg size and pay special attention on efficiency.



LOHMANN LSL-LITE NORTH AMERICA is a customized hen for the demands of the North American countries.

High egg mass production and flexible feed intake results in an outstanding feed conversion.



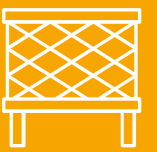
Breeding for success... together!








LOHMANN
BREEDERS

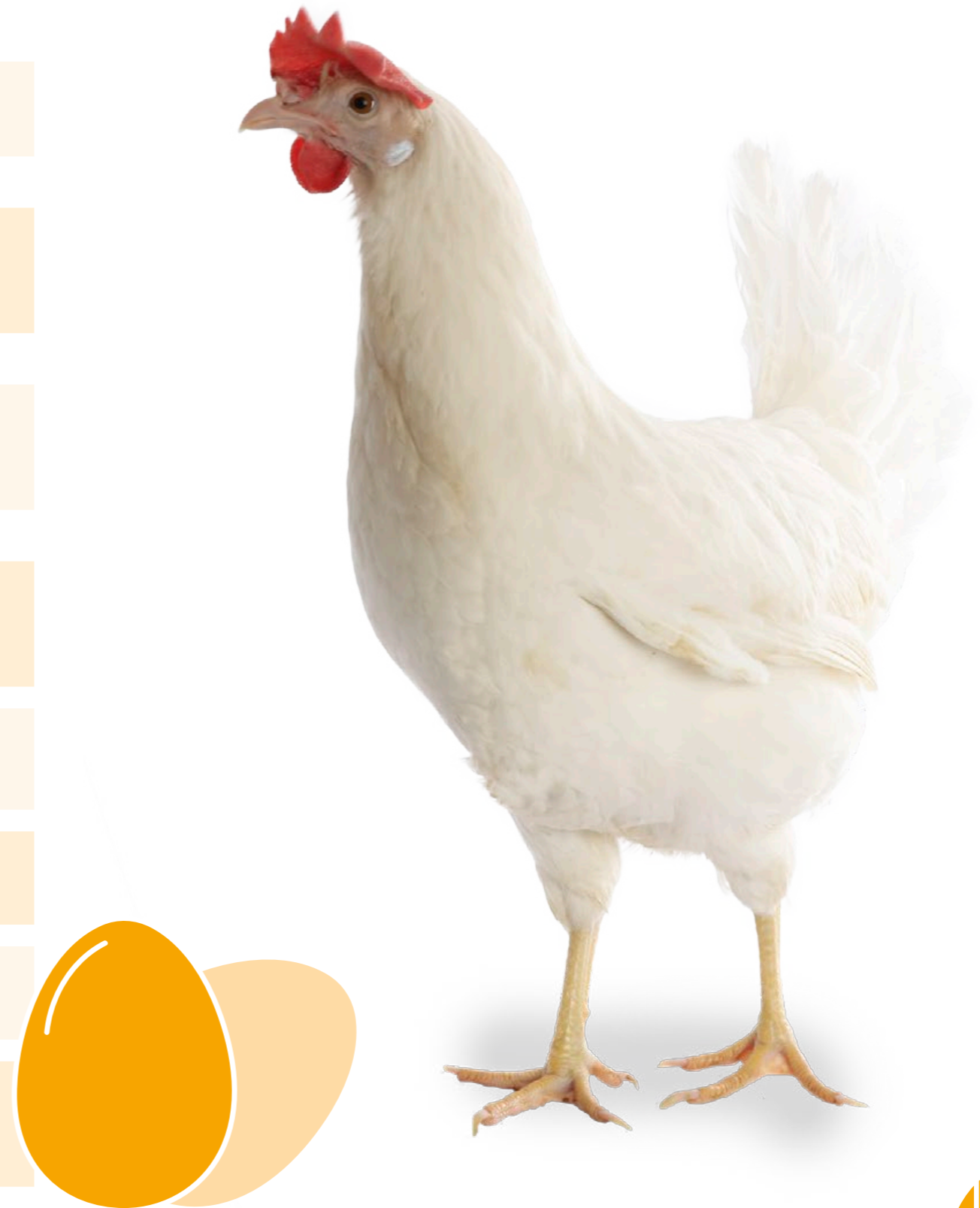
LOHMANN LSL-LITE North America

LAYERS
Cage Systems



PERFORMANCE DATA

Egg Production 	Age at 50% production	140 – 145 days
	Peak production	95 – 97 %
	Eggs per Hen Housed	
	in 72 weeks of age	333
	in 80 weeks of age	378
	in 100 weeks of age	478
	Egg Mass per Hen Housed	
	in 72 weeks of age	20.24 kg
	in 80 weeks of age	23.12 kg
	in 100 weeks of age	29.49 kg
Egg Characteristics 	Shell colour	attractive white
	Shell breaking strength	>40 Newton
	Feed Conversion Ratio 	
	1.93 – 1.99 kg / kg egg mass	
Body Weight 	at 20 weeks	1.35 – 1.45 kg
	at the end of production	1.65 – 1.75 kg
Liveability 	Rearing	98 – 99 %
	Laying period (72 weeks)	95 – 96 %
	Laying period (100 weeks)	91 – 92 %



08/21_V01-21



LOHMANN BREEDERS GmbH | Am Seedeich 9-11 | 27472 Cuxhaven | Germany
Phone +49 (0) 47 21/505-0 | Email info@lohmann-breeders.com | www.lohmann-breeders.com



LOHMANN
BREEDERS