

POULTRY NEWS

by **LOHMANN**

01/2025



BREEDING FOR THE LONG RUN
PERFORMANCE MEETS RESILIENCE

P. 6

LOHMANN
BREEDERS
It's the egg



LOHMANN
BREEDERS

LOHMANN BREEDERS

More Eggs. Better Shells. Smarter Hens.



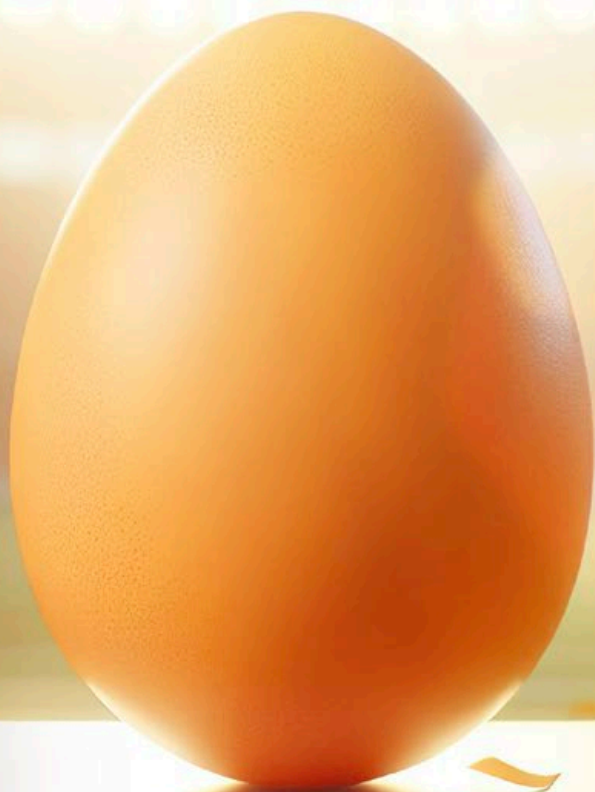
**Crack the
Competition.
Not Your Eggs!**



LOHMANN Layers are well-known for their efficient production of high-quality eggs.

They are characterized by good laying persistence with excellent shell quality.

**LOHMANN
QUALITY – the
best choice!**



1



www.lohmann-breeders.com

BREEDING FOR SUCCESS... TOGETHER



**LOHMANN
BREEDERS**

It's the egg

PERFORMANCE MEETS INNOVATION

Welcome to the latest edition of our **Poultry News** — already the second one I have the pleasure of introducing.

What a year it has been! As we approach the **60th LOHMANN Franchise Distributor Meeting**, it is impossible not to feel a sense of excitement and appreciation for everything that has happened across our global LOHMANN community.

With our motto “Performance meets Innovation,” this year has once again shown how powerful the combination of experience, scientific progress, and customer partnership can be. A key focus for us continues to be working with meaningful data. Your field results and practical insights provide an essential foundation that helps us identify trends, adjust our recommendations, and further enhance our products and services. Thank you for sharing your experience with us — your input truly drives our continuous improvement.

This edition of Poultry News reflects exactly what makes LOHMANN unique:

a colourful mix of articles from our global events, LOHMANN SCHOOLS, customer stories, internal updates, and technical highlights. It is a vibrant potpourri of everything that defines who we are as a company — a blend of tradition and innovation, of proven knowledge and new learning, of experience and adaptation to changing conditions.

We believe this mixture is the key to continued success — both ours and yours.

Thank you for being part of the LOHMANN family and for shaping this journey with us.

Breeding for success...together!

Enjoy reading!




Jurek Grapentin
Commercial Managing Director



CONTENTS

6

BREEDING FOR THE LONG RUN PERFORMANCE MEETS RESILIENCE

In poultry breeding, lasting success means consistent high performance and resilience. At LOHMANN BREEDERS, we focus on developing hens that are...



14

LOHMANN SCHOOL AT 25 A QUARTER CENTURY, 3,500 PARTICIPANTS, 6 CONTINENTS: SHAPING POULTRY KNOWLEDGE WORLDWIDE

This year's LOHMANN SCHOOL was more than just another week of...



18

LOHMANN HATCHERY COURSE 2025 GIVING CHICKS THE BEST POSSIBLE START

In 2025, we're once again returning to where it all begins: the hatchery. As part of the LOHMANN HATCHERY COURSE, participants...

LOHMANN NORDIC SCHOOL 2025 THREE DAYS OF KNOWLEDGE, EXCHANGE & PARTNERSHIP IN GOTHENBURG

After the great success of the first Nordic School in Copenhagen 2023, LOHMANN BREEDERS and its Nordic partners once again...



30

SMALL GROUP, BIG IMPACT HIGHLIGHTS FROM THE LABORATORY SCHOOL IN CUXHAVEN

From May 11 to 16, the coastal town of Cuxhaven became the vibrant hub of international veterinary exchange as...



36

60TH LOHMANN FRANCHISE DISTRIBUTOR MEETING PERFORMANCE MEETS INNOVATION

The 60th LOHMANN Franchise Distributor Meeting in Singapore was not only a success on paper; it was a genuine milestone...



50

LOHMANN SCHOOL CAGE-FREE 2025 A WEEK OF EXPERT INSIGHT AND GLOBAL EXCHANGE

The importance of cage-free poultry farming continues to rise—not only in Germany and Europe but...

54

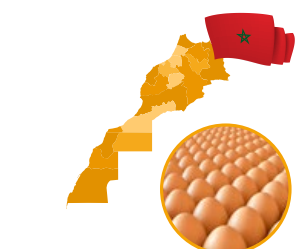
EMPOWERING COMMUNITIES THROUGH KNOWLEDGE GLOBAL EGG SCHOOL IN MOZAMBIQUE

From July 18th to 21st, the International Egg Foundation (IEF), in partnership with LOHMANN BREEDERS, brought the...





It's the egg



58

SNV REMARKABLE SUCCESS OF THE LOHMANN MOROCCO SEMINAR

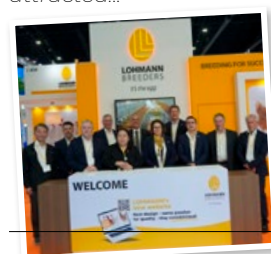
Morocco's poultry industry has steadily grown, producing over 6.1 billion eggs in 2020 and meeting al...

64

LOHMANN BREEDERS SHINES AT VIV ASIA 2025 IN BANGKOK

LOHMANN BREEDERS proudly reflects on its successful participation at VIV ASIA 2025 in Bangkok.

Our vibrant booth attracted...



68

LOHMANN BREEDERS AT LPN MIAMI 2025 KNOWLEDGE, LEADERSHIP & INNOVATION

The LPN Congress & Expo 2025 took place from October 7-9 in Miami, USA, bringing together over 3,000 attendees and 900 exhibitors from...



72

FROM HOT SPRINGS TO THAI KITCHENS: LOHMANN EGGS IN ONSEN STYLE

LOHMANN eggs in Thailand are now also part of the local options the consumers can pick...



76

SICHUAN SUNLOHMANN (SLB) INTRODUCTION & BUSINESS HIGHLIGHTS

Sichuan Sunlohmänn Agricultural Technology Co., Ltd. (SLB) is a Sino-German joint venture enterprise integrating...

86

AVICOLA SOFIA A LEGACY OVER 40 YEARS IN THE MARKET, JUST LIKE THE STORY OF LOHMANN BROWN

The most traditional poultry company in Bolivia, Avicola Sofia, traces its roots back over 40 years to...



90

BOUNTY FARMS CELEBRATES 25 YEARS OF PARTNERSHIP WITH LOHMANN

**FROM 5,000
PS CHICKS TO
SOUTHEAST
ASIA'S LARGEST
PARENT STOCK
CUSTOMER**

Bounty Farms marked its 25th anniversary of partnership with LOHMANN BREEDERS in 2024 in Cebu, Philippines, a milestone that reflects...



CONTENTS

CONTENTS



94

GROWING FOR SUCCESS... TOGETHER!

At LOHMANN BREEDERS, success is built on people – their passion, dedication, and teamwork.

And this year, our LOHMANN family continues to grow!

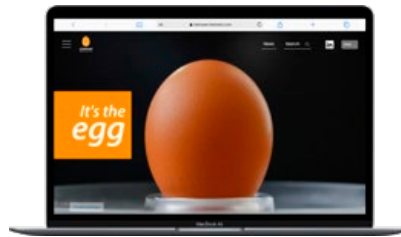


96

CONNECTING THE POULTRY WORLD

LOHMANN ON LINKEDIN

2025 marked another year of growth and connection in LOHMANN BREEDERS' digital presence. With an ever-expanding global community, our...



100

LET'S TALK ABOUT OUR BREEDS YOUR NEW LOHMANN MARKETING TOOLKIT IS HERE!

After the successful launch of our new website, we are excited to present another highlight: the new Marketing Toolkit – a dedicated online space designed to...



102

DISCOVER OUR NEW WEBSITE! INNOVATION MEETS USABILITY – THE NEW LOHMANN ONLINE EXPERIENCE

At LOHMANN BREEDERS, innovation is more than a promise – it's part of our DNA.

That's why we are proud to present our newly designed LOHMANN website: a platform that...

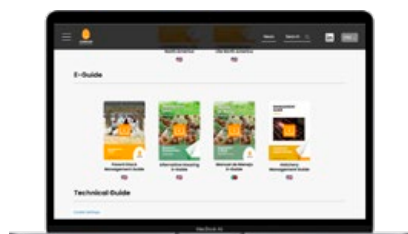


106

A NEW CAMPAIGN FOR A NEW ERA CELEBRATING DIVERSITY, EFFICIENCY & EGG QUALITY

LOHMANN BREEDERS has launched a powerful new global campaign – one that brings our core strengths into the...





112

NEW INTERACTIVE LOHMANN PARENT STOCK MANAGEMENT GUIDE LAUNCHED

Some milestones deserve a special spotlight, and this one certainly does.

During the 60th LOHMANN Franchise Distributor Meeting (FDM) in Singapore, LOHMANN BREEDERS officially launched...



114

CELEBRATING EXCELLENCE: OUR BEST FLOCK AWARD WINNERS

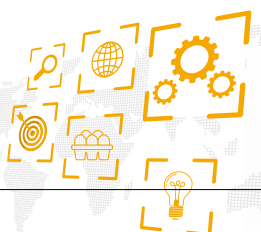


Behind every strong data set stands a strong flock — and committed partners who share their results with us. The many customers who submitted their flock data this year not only contributed to deeper benchmarking insights, but also...

118

BENCHMARKING AND DATA ANALYSIS: DRIVING EXCELLENCE IN POULTRY PRODUCTION

Modern poultry production demands precision. Gone are the days when intuition alone could guide management decisions. Today, benchmarking and data-driven analysis are essential tools for...



124

COCCIDIOSIS VACCINATION FIVE KEY POINTS FOR EFFECTIVE POST-VACCINATION MANAGEMENT IN CAGE-FREE SYSTEMS

With the rise of more cage-free systems such as aviaries, coccidiosis has re-emerged as a significant challenge. One of the main reasons for...



134

HATCHERY CONTAMINATION PRINCIPLES AND PRACTICAL TIPS

Hatchery contamination can be one of the most serious challenges for the entire production management, since the hatchery is the main hub of...



BREEDING FOR THE LONG RUN

PERFORMANCE MEETS RESILIENCE

Dr. Matthias Schmutz
Director of Research & Development

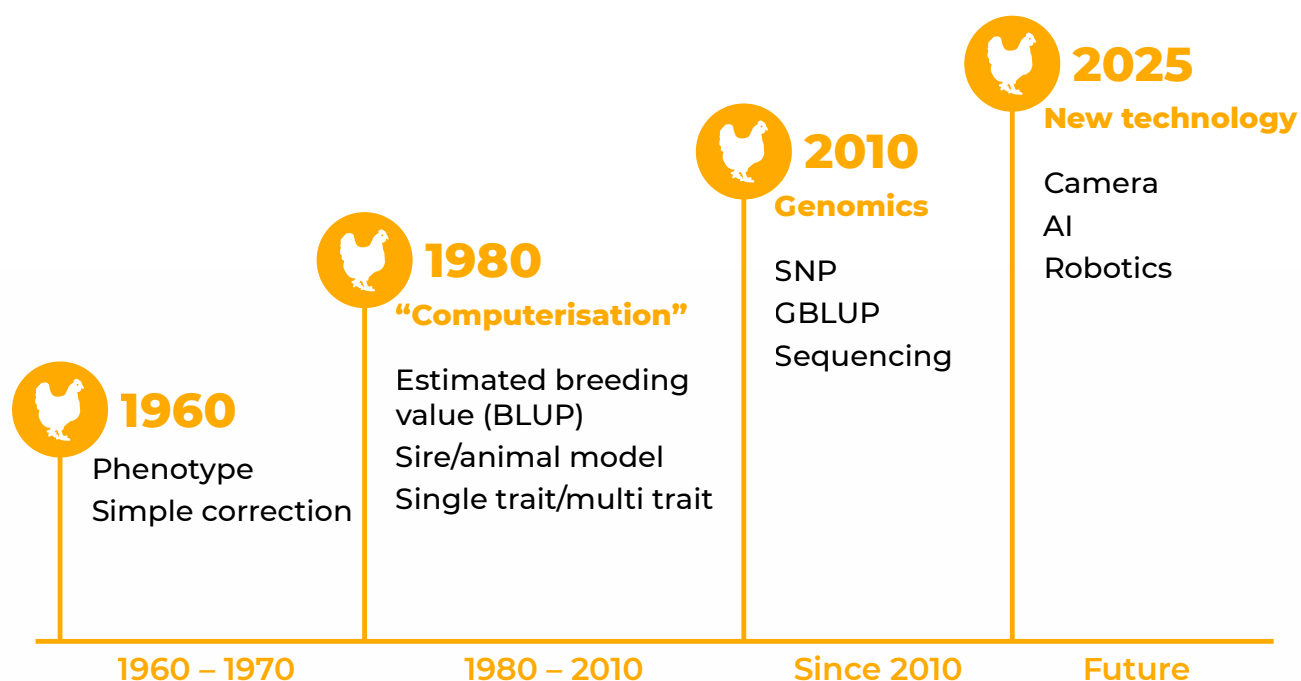
In poultry breeding, lasting success means consistent high performance and resilience. At LOHMANN BREEDERS, we focus on developing hens that are productive, robust, adaptable, and sustainable.



A journey of innovation and precision

Poultry genetics has advanced from basic phenotype selection to a science driven by genomics, AI data analysis, and automated recording.

These innovations allow us to accurately identify superior animals earlier, shorten generation intervals, and accelerate genetic progress in economically important traits.



▲ **Graphic 1.** Evolution of breeding

Genetic progress you can measure

The outcomes of this approach are measurable. For instance, the LOHMANN LSL-CLASSIC line has demonstrated consistent improvements in egg production over time.

In 2003, hens produced approximately 345 eggs by 80 weeks of age. This figure increased to 374 eggs by 2022, with projections indicating up to 378 eggs by 2026.

This represents an increase of 29 eggs over two decades, achieved through sustained genetic advancements.

Additionally, the productive lifespan of the hens continues to expand, with a single cycle of 120 weeks now considered attainable.

Weeks	80	90	95	100	120 weeks
2003	345				
2005	351				
2008	359				
2011	364	411			
2015	368	416	438		
2022	374	425	449	471	?? (580)
2026	?? (378)	?? (430)	?? (455)	?? (480)	

29 additional eggs over two decades

▲ **Chart 1.** LOHMANN LSL-Classic performance standard



What is behind longer cycles: the power of persistency

Optimum sexual maturity and peak lay rates over 98% for several weeks is already achieved. The focus is now on persistency—the ability to maintain high laying rates over time. We focus on traits that support long-term performance:

- Stable egg weight curves** with good early egg size
- Late shell quality** to ensure marketable eggs throughout the laying cycle
- Good feed intake capacity**, especially at the onset of lay
- Livability**, ensuring hens remain healthy and productive well into later stages

These traits are carefully monitored and selected across generations, contributing to both economic efficiency and animal welfare.

	Prod. 20-27	Prod. 28-43	Prod. 44-51	Prod. 52-71	Prod. 72-87	Prod. 88-103	Prod. 104-119	Egg weight	Feed intake	Shell Strength
Prod. 20-27	.44	.42	.36	.14	.00	-.03	-.05	-.30	.12	-.01
Prod. 28-43		.07	.95	.81	.66	.24	.15	-.44	.01	.18
Prod. 44-51			.09	.89	.81	.46	.17	-.38	.08	.11
Prod. 52-71				.13	.94	.81	.58	-.26	.02	.02
Prod. 72-87					.24	.90	.85	-.15	.09	.05
Prod. 88-103						.31	.92	-.19	.12	-.06
Prod. 104-119							.34	-.21	.06	.07
Egg weight								.76	.61	-.23
Feed intake									.29	-.08
Shell Strength										.30

▲ Chart 2. Genetic parameters of persistency

Genetic Parameters for longer egg production show a high heritability and not more stronger negative genetic correlations to sexual maturity and egg size as already seen before.

Real-life testing for real-world results

Our breeding programs reflect global production diversity. We test pure and cross lines in various settings—single cages, family groups, transponder-nest systems, and aviaries—to ensure hens perform well under commercial conditions.

Crossline testing captures heterosis effects and assesses family performance in realistic environments. These findings directly improve our selection process, enabling us to breed hens that succeed in real-world settings.

Global reach, local impact

Our genetic lines are tested and proven across continents—from Europe to Asia to Latin America.

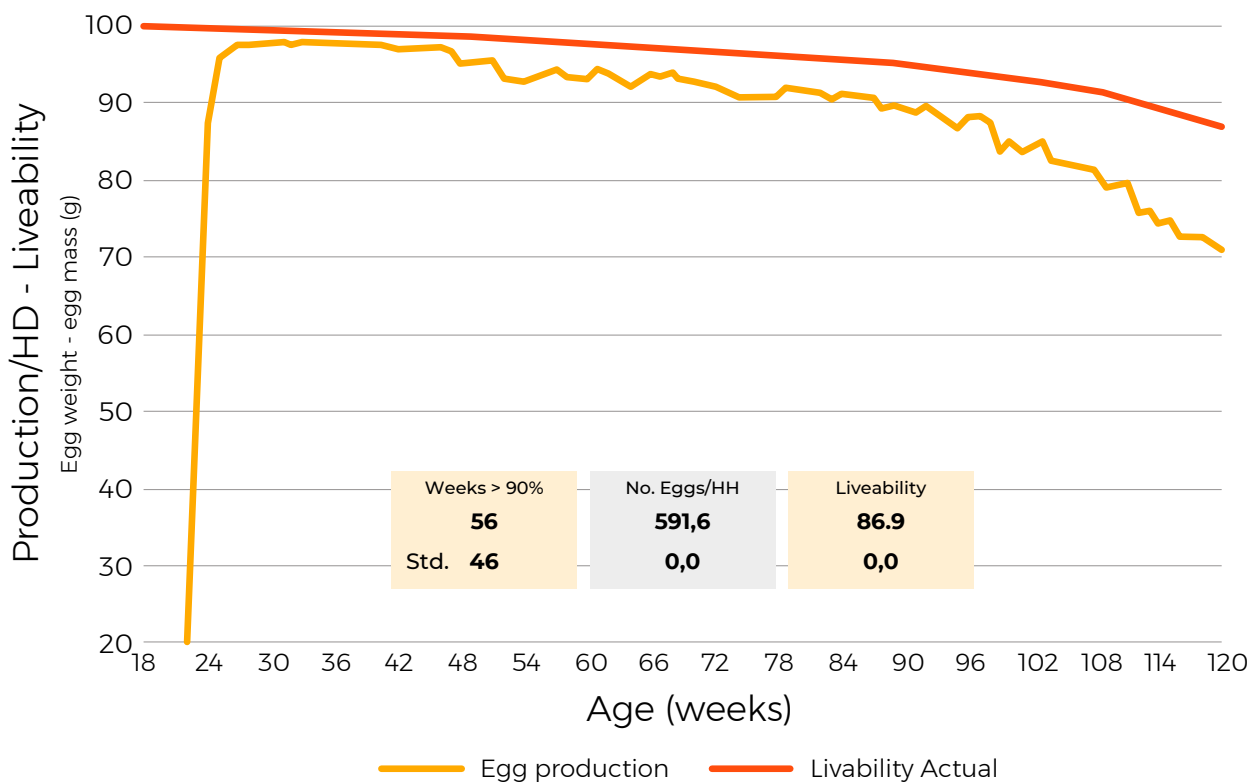
Whether it's improved livability in Japan or enhanced egg numbers in Colombia and Brazil, the genetic trends are clear: LOHMANN hens deliver consistent performance across diverse climates and management systems.



Story of success continues: LOHMANN LSL-LITE EUROPE

LOHMANN LSL-LITE EUROPE, introduced in the Netherlands and Germany in 2021, continues to perform outstanding.

The latest example is a flock from the Netherlands in aviary housing without beak treatment reaching 592 eggs/HH in 120 weeks.



▲ **Chart 3.** Flock LOHMANN LSL-LITE EUROPE: 120 weeks



Breeding with responsibility

At LOHMANN BREEDERS, we believe that breeding is a responsibility. It's about shaping the future of poultry production with a focus on sustainability, animal health, and economic viability.

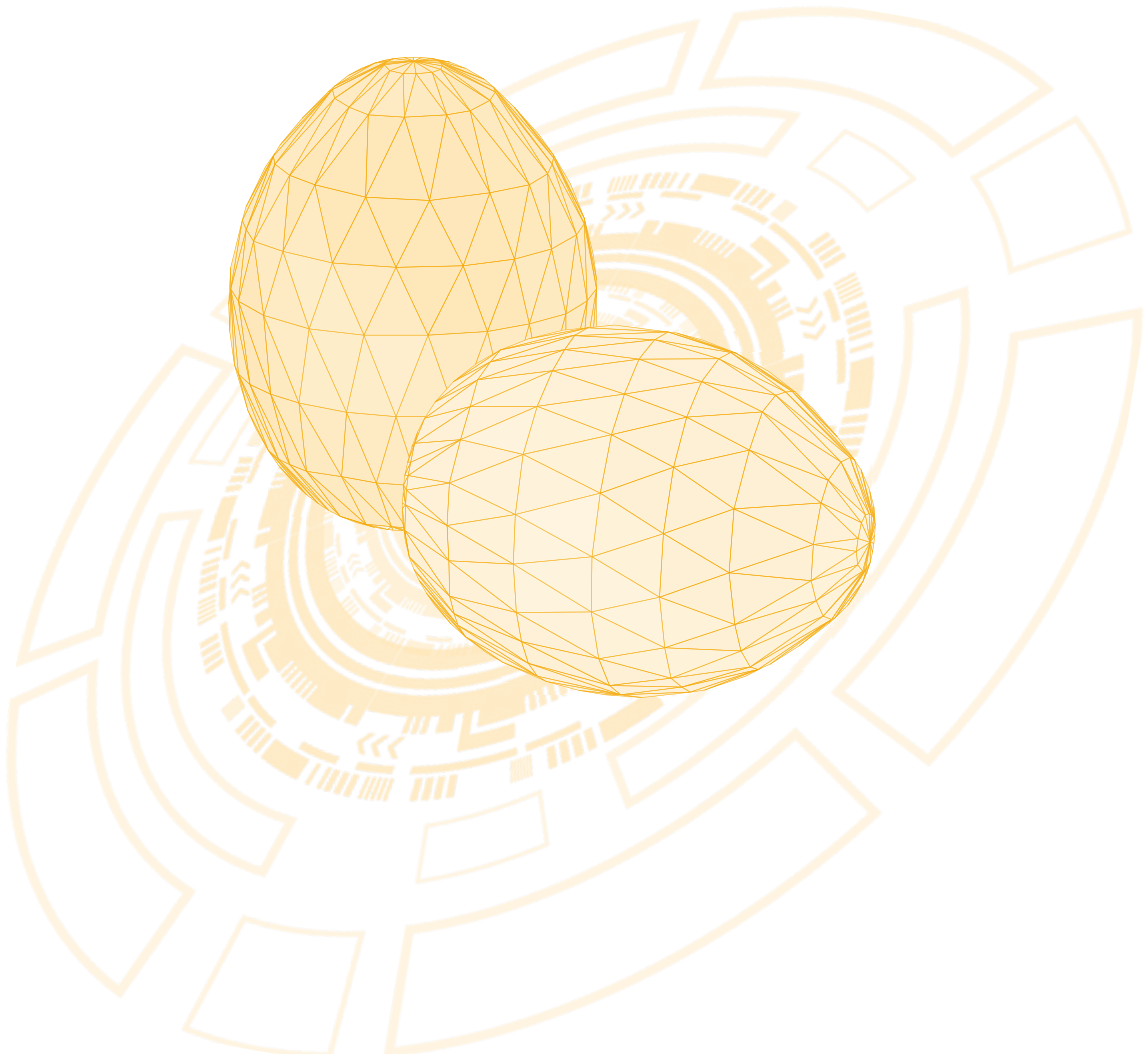
By combining cutting-edge technology with decades of expertise, we continue to breed hens that meet the demands of today—and are ready for the challenges of tomorrow

NOW

FUTURE



LOADING...



LOHMANN BREEDERS

More Eggs. Better Shells. Smarter Hens.

**Less Feed,
More Eggs.
Unmatched
Performance.**



LOHMANN Layers are the most efficient birds in terms of feed conversion.

Do you pay special attention on this trait?

LOHMANN is the right choice!



www.lohmann-breeders.com

BREEDING FOR SUCCESS... TOGETHER



**LOHMANN
BREEDERS**

It's the egg



LOHMANN SCHOOL AT 25 A QUARTER CENTURY, 3,500 PARTICIPANTS, 6 CONTINENTS: SHAPING POULTRY KNOWLEDGE WORLDWIDE

Xinye Yang
Marketing

Last week, LOHMANN SCHOOL 2025 was held in Cuxhaven – and we would like to thank all participants for making it such a memorable week of learning, exchange, and collaboration.

This year's LOHMANN SCHOOL was more than just another week of intensive training. It marked a very special milestone: the 25th anniversary of this unique program.

For a quarter of a century, LOHMANN SCHOOL has been more than a training platform – it has been the place where science meets practice, and where poultry experts, customers, and distributors come together to turn theory into real-world success.

Since its beginnings in 2000 with only 8 participants in Cuxhaven, LOHMANN SCHOOL has grown into a global benchmark in poultry education. Over the years, it has welcomed thousands of participants from all continents, building not only a platform for knowledge but also a true community of trust, exchange, and friendship.



3,500+
participants
worldwide



102
training
events across
6 continents



Training in
genetics, nutrition, rearing,
management, biosecurity,
and disease prevention

At LOHMANN SCHOOL 2025, participants explored the full production cycle – from genetics and rearing foundations to nutrition strategies during transition and lay, as well as practical management solutions, parent-stock optimization, biosecurity, and poultry health challenges.

Day 1

We opened at our Cuxhaven headquarters with a warm welcome, an interactive chicken quiz, and key lectures on advancements in genetics & breeding (**Dr. Matthias Schmutz**), followed by data recording and performance analysis (**T. Calil**) and the foundations of poultry production (**F. Mozafar**).

The day ended with bowling and a joint dinner, setting the tone for learning and networking.

MONDAY 18th AUGUST 2025	
08:00	Transfer to headquarters
09:00-09:45	Welcome & Introduction
09:45-10:15	"LOHMANN: The Leading Breeding Company"
10:15-10:45	Interactive Chicken Quiz Knowledge
LOHMANN TALK	
10:45-11:00	Coffee break
11:00-12:30	Advancements in Genetics & Breeding
	Dr. M. Schmutz
12:30-12:45	Lunch
12:45-14:15	Data recording & analysis for better performance: a realistic approach
	T. Calil
14:15-14:30	Coffee break
14:30-15:45	The Beginning
	F. Mozafar
16:00	Walk to Saturn Bowling
16:30-18:30	Bowling
19:00	Walk together / Transfer to the restaurant
	Meeting point: Hotel lobby
19:15	Dinner
	Hotel Villa Veneta Strandpromenade 49 26425 Cuxhaven 04721 991040





LOHMANN
BREEDERS

Day 2

The focus shifted to rearing and nutrition. Participants explored management strategies for pullets, nutrition during the critical transition and laying periods, and practical tools for maximizing performance.

Expert lectures were complemented by applied case studies and group discussions.

TUESDAY 19 th AUGUST 2025	
08:00	Transfer to Headquarters Meeting point: Hotel lobby
08:30 - 09:45	Feeding "The Column Base"
M. Chahin	
09:45 - 10:00	Coffee Break
10:00 - 11:15	Nutrition in the preparation period
J. Valle	
11:15 - 12:00	Coffee Break
12:00 - 13:00	Nutrition in the production period
J. Valle	
13:00 - 13:45	Lunch
13:45 - 15:00	Through eyes of a chicken
R. Moser	
15:00 - 16:15	Coffee Break
16:15 - 16:30	Nutrition & metabolism for healthy layers
R. Aguilar	
16:30	Walk together to the restaurant
Meeting point: Hotel lobby	
19:30	Dinner
Summary: Am Erlenmeyer, 4 2512 Culham 0470 696070	



Day 3

This day was dedicated to health and management challenges.

From biosecurity to poultry diseases, participants discussed real-world scenarios with LOHMANN specialists, gaining insights that can be transferred directly to their farms.

Venue Kaptein-Alxander-Strasse 16 27472 Cuxhaven, GERMANY	
WEDNESDAY 20 th AUGUST 2025	
08:00	Transfer to Headquarters Meeting point: Hotel lobby
08:30 - 09:45	Biosecurity & Vaccinations
Dr. M. Vird / Dr. B. Halbach	
09:45 - 10:00	Coffee Break
10:00 - 11:00	Plaint-Stock Management
R. Bok	
11:00 - 12:00	Coffee Break
12:00 - 13:45	Challenges of Poultry Diseases in Today's Layer Industry
Dr. M. Vird / Dr. B. Halbach	
13:45 - 14:45	Lunch
14:45 - 15:00	Troubleshooting of Management Issues
M. Chahin	
15:00 - 16:00	Coffee Break
16:00 - 17:00	Hot Climate Management
J. Valle	
17:00	Walk together / Transfer to the restaurant
Meeting point: Hotel lobby	
Restaurant: Pöhlmann, Pöhlmann 2 27472 Cuxhaven	



Day 4

The program concluded with parent stock optimization and integrative sessions tying genetics, nutrition, and management together – highlighting the importance of a holistic approach.





LOHMANN HATCHERY COURSE 2025

GIVING CHICKS THE BEST POSSIBLE START

Nicole Rehse
PR/Communication

Back to where it all begins: focus on the hatchery

In 2025, we're once again returning to where it all begins: the hatchery. As part of the LOHMANN HATCHERY COURSE, participants from around the world come together to dive deep into all aspects of incubation and chick quality.



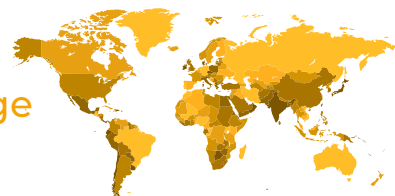
International participants and lively exchange

Led by **Davide Assirelli**, our **General Technical Manager Incubation**, this year's Hatchery School provided an exciting learning platform for 25 participants from 13 countries.



Davide Assirelli
Incubation

This diverse mix encouraged especially rich experience-sharing and lively discussions.



Comprehensive programme with expert knowledge

The programme was wide-ranging and highly practical. Internal and external speakers covered topics such as genetics, ventilation and biosecurity, SPIDES, hatchery construction and optimisation, and many more.

A particular focus was placed on not only delivering knowledge but also allowing ample time for questions and discussion, so everyone could benefit from experiences across different countries.



Practical workshops and hands-on learning

A central part of the course was the practical workshops led by **Davide Assirelli**, where participants could apply and deepen what they learned directly.



Excursion to Helgoland – with typical northern weather

Of course, there was also a social programme: an excursion to Helgoland was planned, but the North German weather didn't cooperate.

Heavy rain unfortunately prevented the guided tour with our colleague and bird expert. Nevertheless, there were plenty of opportunities for informal exchange and networking outside the seminar room.



Thank you for a shared success

A big thank you to everyone who made this course so lively and insightful.

Together, we lay the foundation for healthy, strong chicks and successful production.

It all begins with a good start in life – and leads to what drives us: LOHMANN BREEDERS – It's the egg!





LOHMANN NORDIC SCHOOL 2025

THREE DAYS OF KNOWLEDGE, EXCHANGE & PARTNERSHIP IN GOTHENBURG

Xinye Yang
Marketing

After the great success of the first Nordic School in Copenhagen 2023, LOHMANN BREEDERS and its Nordic partners once again gathered egg producers and industry professionals for the 2nd LOHMANN NORDIC SCHOOL, held from June 10–12, 2025, in Gothenburg, Sweden.

Around 80 participants from Nordic region joined for an intensive three-day program, focusing on flock management, technical service, field experience and practical applications.

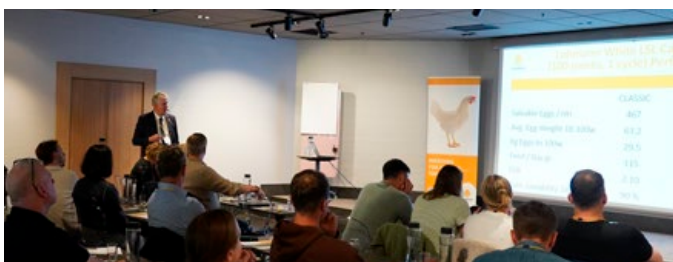
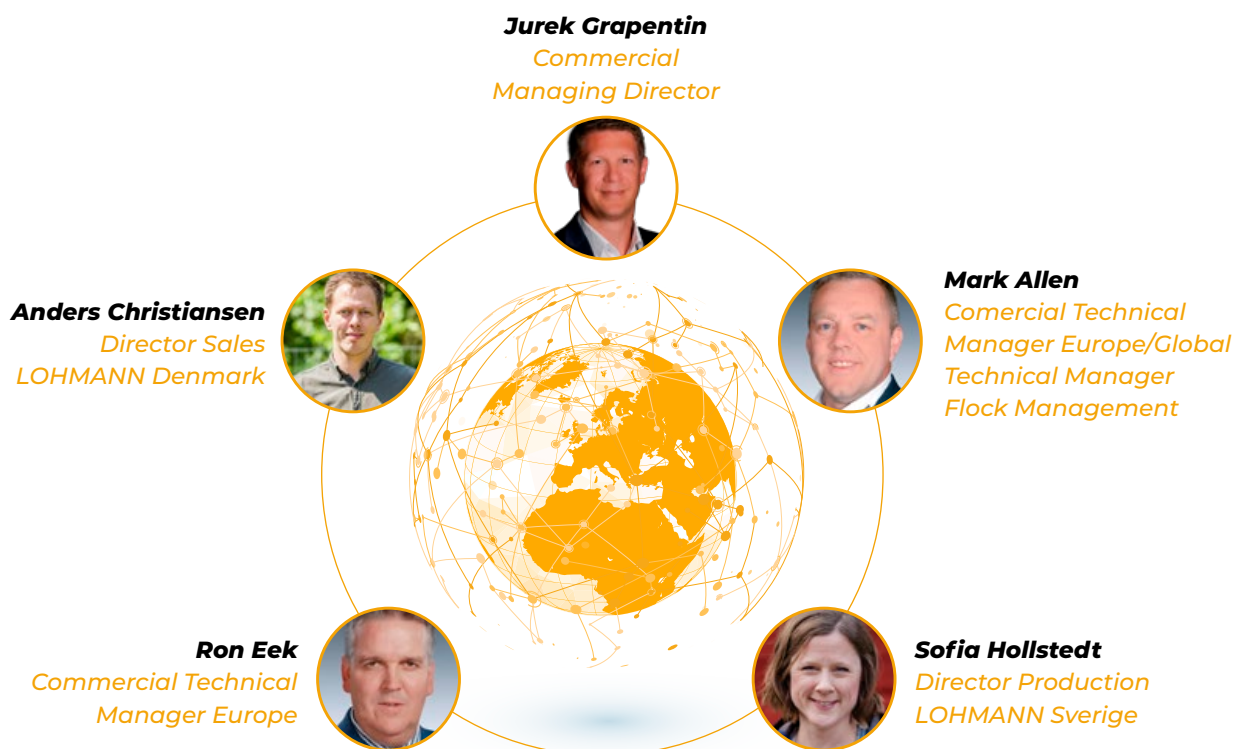
The event was organized in close collaboration with LOHMANN SVERIGE AB and our distributors from Sweden, Norway (Steinsland & Co.), Finland (LSK Poultry OY), Denmark (LOHMANN DENMARK), and Iceland (Stjörnuegg), offering a highly practical and diverse program.



Day 1 – Welcome & Genetics Focus

The event opened with a warm welcome by **Jurek Grapentin, Commercial Managing Director of LOHMANN BREEDERS**. An interactive introduction session followed, led by **Anders Christiansen (LOHMANN Denmark)** and **Mark Allen (LOHMANN BREEDERS)**.

The first technical focus was set by Ron Eek (LOHMANN BREEDERS), who provided valuable insights into LOHMANN's genetic approach, followed by Sofia Hollstedt (LOHMANN Sverige) with a very practical session on the "Do's and Don'ts of Successful Layer Management" providing hands-on advice for optimizing daily flock management.



Day 2 – Global Technical Manager Day

The second day was fully dedicated to technical expertise from the LOHMANN BREEDERS' Global Technical Service Team, focusing on the key pillars of successful layer management:

Optimizing Nutrition & Eggshell Quality



Juan Valle Díez
*Global Technical Manager
Nutrition*

Animal Health & Food Safety



Dr. Andreas Bublat
*Global Technical Manager
Veterinary*

Flock Longevity & Extended Laying Cycles



Mark Allen
*Global Technical Manager
Flock Management*

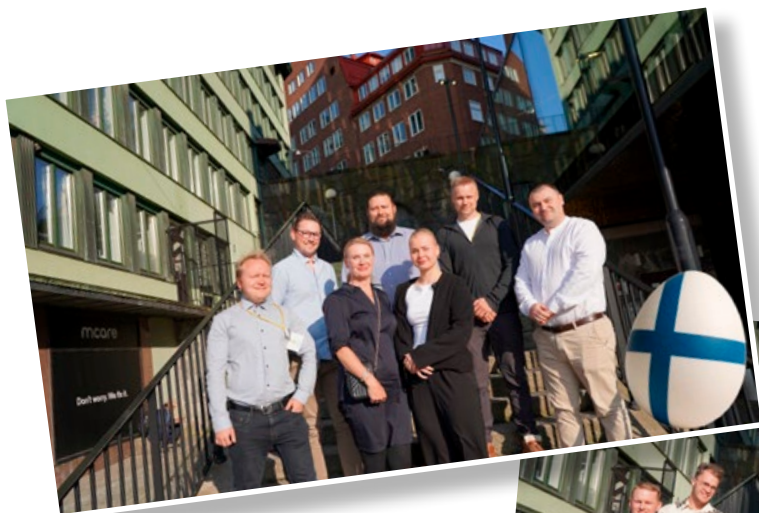
Management of 100 (120) weeks



Marco Magrini
*Global Technical Manager
Veterinary*

Through real-world experience and practical recommendations, participants received valuable input to improve egg quality, performance, and profitability.





Day 3 – Field Experience & Extended Production

The final day offered practical field reports from LOHMANN's distributor partners:

Ter Heerdt kuikens en hennen LOHMANN's Dutch distributor, presented their report "100 Weeks and Beyond – Report of Field Experience from the Netherlands and Germany."



Charlotte Frantzen Bjerg (DANÆG) presented on "Extended Production – Production Results and Egg Quality Characteristics", with highly valuable insights on longer production cycles.



Charlotte Frantzen Bjerg
*Specialist poultry
consultant DANÆG*



Special Anniversary: 10 Years of Partnership with LOHMANN Denmark

A special highlight of the Nordic School was the celebration of 10 years of partnership with LOHMANN Denmark ApS.

Jurek Grapentin, Commercial Managing Director of LOHMANN BREEDERS, presented the anniversary certificate to Anders Christiansen, Sales Director of LOHMANN Denmark ApS, recognizing 10 years of loyal partnership and commitment to excellence.



With roots going back to 1959, the company has grown from a small hatchery into Denmark's top 3 leading hatcheries. In 1985, Glen Nielsen joined the family business, and in 1989, the partnership with LOHMANN BREEDERS was established — marking a significant step in the company's growth.

In 2015, this collaboration evolved into a Joint Venture, and by 2017, the company proudly became LOHMANN Denmark ApS.



We thank the entire LOHMANN Denmark team for their ongoing trust and dedication — and look forward to many more years of successful cooperation!

Thanks to All Partners & Producers

We sincerely thank all participants for their active engagement and all LOHMANN Nordic distributors for their excellent organization and daily field support: **LOHMANN Sverige AB, LOHMANN Denmark ApS, Steinsland & Co AS, LSK POULTRY OY, and Stjörnuegg.**



A special thanks also goes to the many egg producers working daily with the LOHMANN LSL-LITE — it is only through their commitment, dedication and expertise that our birds fully reach their outstanding genetic potential in the field.

Three days of intensive training, valuable exchange, excellent discussions, and new partnerships —What connects us all is simple:

LOHMANN BREEDERS – It's the egg.





Take your notes



LOHMANN
BREEDERS



LOHMANN
BREEDERS

Welcome to
LOHMANN BREEDERS



LOHMANN
BREEDERS



SMALL GROUP, BIG IMPACT

HIGHLIGHTS FROM THE LABORATORY SCHOOL IN CUXHAVEN

Nicole Rehse
PR/Communication

From May 11 to 16, the coastal town of Cuxhaven became the vibrant hub of international veterinary exchange as we hosted our **LABORATORY SCHOOL** – a compact yet powerful training event that brought together **12 participants from 6 different nations**. A small group, yes – but one that made room for deep learning, personal connections, and meaningful dialogue.

An intimate setting for intensive learning

The charm of this event lay in its size. With a limited number of participants, the atmosphere was **intensely focused and highly interactive**. Questions flowed freely, and the usual hesitation often felt in larger groups simply didn't exist. Everyone had the chance to engage directly with speakers, ask follow-up questions, and dive deeper into the topics that mattered most to them.

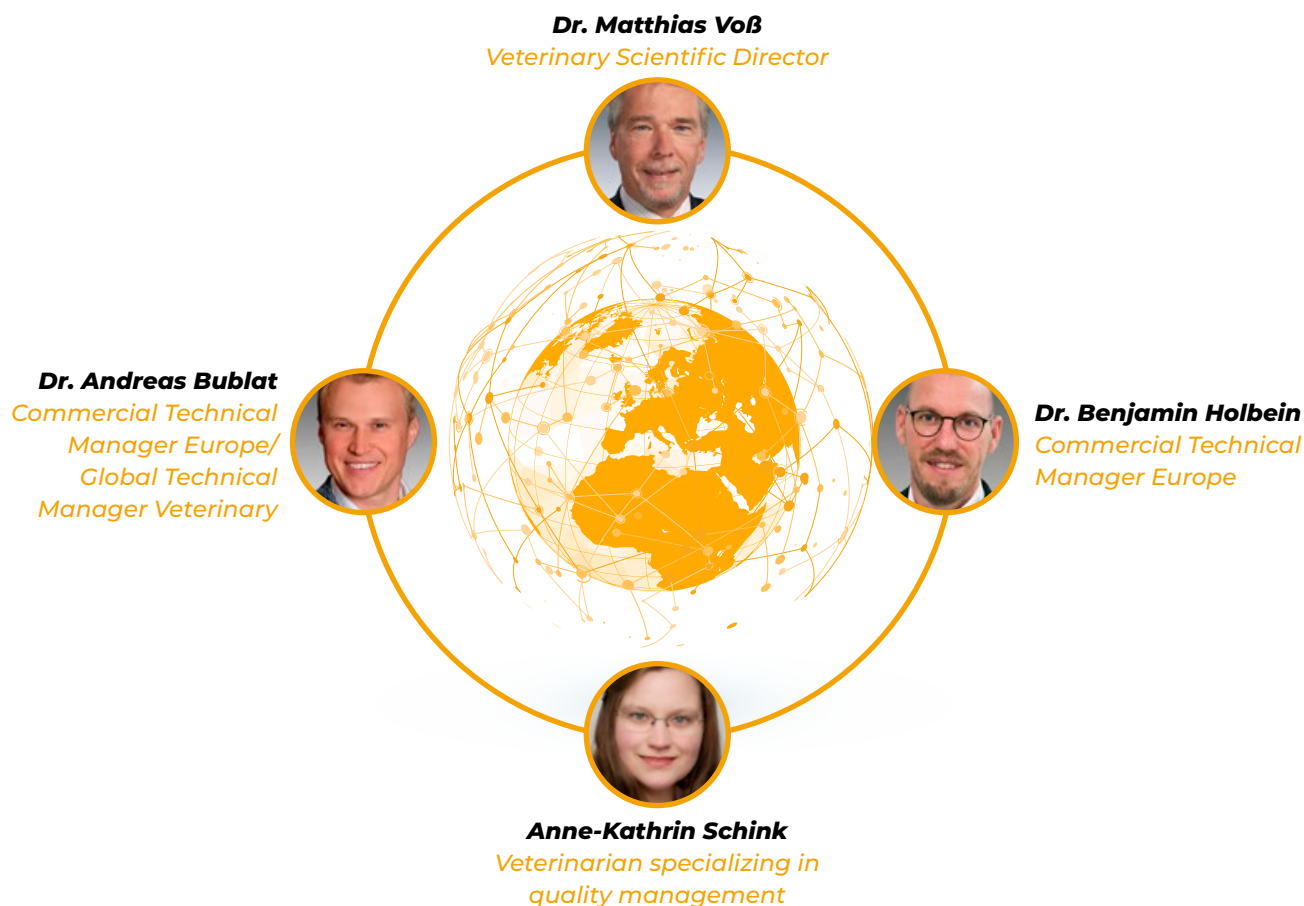


Even the evening dinners reflected this spirit – personal, relaxed, and full of lively exchange. By the end of the week, everyone had spoken with everyone, and the group felt more like a team than a classroom.

Led by experts, driven by passion

The course was led by **Dr. Matthias Voß**, a true veteran in the field with over 30 years of experience at LOHMANN BREEDERS.

There could hardly be a better guide through the complex world of veterinary diagnostics. He was supported by a dynamic team: Dr. Andreas Bublat, Dr. Benjamin Holbein, and Anne-Kathrin Schink, who all brought fresh perspectives and energy to the sessions.



From lab work to immunology: a rich curriculum

The program focused on two major themes:

Laboratory testing.

How birds fight infections.

These were complemented by in-depth sessions on **Bacteriology** and **Virology**, ensuring a well-rounded scientific experience.

We were honored to welcome several **external guest speakers** who enriched the program with their expertise:

Prof. Dr. Bernd Kaspers delivered a comprehensive two-part lecture on **avian immunology**, titled *How Birds Fight Infections*.

Dr. Tarik Sulejmanovic from Virma Vaxxinova shared insights on **Diagnostics in Veterinary Autogenous Vaccines**.

Jantina de Vylder from BioChek presented on **Serological and Molecular Techniques**.

Johanna Elvidge from Aviagen introduced us to **New Technologies**, including **Next-Generation Sequencing (NGS)** and **Salmonella diagnostics**.



Prof. Dr. Bernd Kaspers¹

Veterinarian
specializing in quality
management



Dr. Tarik Sulejmanovic²

Key Account
Manager at
Vaxxinova



Jantina de Vylder

Business Unit
Manager Poultry
at BioChek



Johanna Elvidge³

Company
Microbiologist at
Aviagen

Source:

¹<https://icpih.com/keynote-speakers-2024/>

²<https://www.researchgate.net/profile/Tarik-Sulejmanovic>

³<https://www.wattagnet.com/broilers-turkeys/article/15521322/intestino-permeable-en-la-salud-intestinal-avicola-wattagnet>

A scientific break on Helgoland

One of the highlights of the week was the **excursion to Helgoland**. While the trip offered some well-deserved free time, it also included a fascinating talk by **Anne-Kathrin Schink** on the island's unique birdlife – a perfect blend of leisure and learning.



Looking ahead

We hope all participants enjoyed the experience as much as we did. If there are any remaining questions, our **dedicated veterinary team** is always happy to help.

And don't forget to explore our **TOOLBOX** for additional resources and insights.



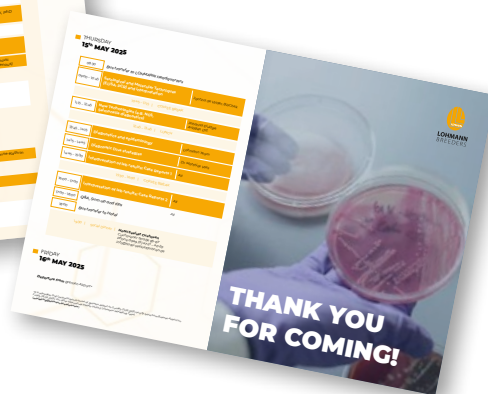
Toolbox



We're already looking forward to the next edition of the **LABORATORY SCHOOL** – and to welcoming another group of passionate professionals ready to learn, share, and grow together.

LOHMANN BREEDERS - It's the egg







60TH LOHMANN FRANCHISE DISTRIBUTOR MEETING

PERFORMANCE MEETS INNOVATION

Nicole Rehse
PR/Communication



LOHMANN at its best

Months of preparation, coordination, and anticipation – and in the end, it all paid off.

The **60th LOHMANN Franchise Distributor Meeting in Singapore** was not only a success on paper; it was a genuine milestone that reminded us what LOHMANN stands for: **innovation, excellence, and a spirit of partnership that spans the globe.**

Every FDM brings its own questions long before the event begins:

Does our two-year concept truly work?

Is the program diverse, relevant, and inspiring for all participants?

Can we maintain the high technical standard we set for ourselves in previous years?

And, perhaps most importantly: are we offering our guests something truly special?

This year, the answer to every one of these questions was a clear YES.



Record participation – A strong signal

The numbers speak for themselves. With nearly 200 participants from **over 52 nations**, representing every region of the world, the FDM once again demonstrated its relevance and strength.

The two-year rhythm has proven to be the right choice, allowing us to build a program that was both **rich in expertise and broad in perspectives**.

Across three days, each themed with a specific focus, we combined LOHMANN's in-house excellence with valuable insights from distinguished external speakers. The result was a dynamic, engaging program that sparked discussions, broadened understanding, and strengthened the global LOHMANN network.



Singapore – A city that mirrors our ambition

Choosing Singapore as the setting for the 60th FDM was no coincidence.

For 60 years, this city has embodied the pursuit of progress: higher, faster, better. **Its spirit of innovation and reinvention reflects exactly what drives LOHMANN – in our genetics, our technology, and in the development of the FDM itself.**

Each edition of the FDM has grown: more participants, more global reach, more sophisticated venues, and higher technical standards. And this year was no exception.

From the moment our guests arrived at the breathtaking Pan Pacific Orchard hotel, it was clear that this would be something extraordinary.



Experiences to remember

The days in Singapore were filled with memorable moments: culinary highlights, cultural experiences, light shows, and iconic sites.

But the true showstopper was undoubtedly the Gala Dinner, hosted at a spectacular venue offering a panoramic, unobstructed 360° view of the dazzling Singapore skyline.

A moment none of us will forget – and a highlight worthy of the FDM's 60-year legacy.



The LOHMANN spirit – more than an event

What makes the FDM special is not only the program or the location – it is **the people**. All of you.

Thank you for your trust, for your presence, and above all, for your participation in the truest sense of the word.

Thank you for being fully involved – for learning, debating, exchanging ideas, and enjoying time together.

We laughed, we shared meals, we discovered new perspectives, and we strengthened what has always defined the FDM:

the LOHMANN Spirit – the feeling of being part of one global family.



Looking ahead – always reaching higher

The entire LOHMANN team is already looking forward to the next FDM.

And as always, we will set ourselves new goals, higher standards, and fresh ideas.

Who knows – after Singapore's skyline, maybe the next step is a flight to the moon?

What we do know is this:

We will continue to innovate, to connect, and to inspire ...together!

LOHMANN BREEDERS – It's the egg

















Check the
gallery here!

PASS: **FDM2025**



LOHMANN SCHOOL CAGE-FREE 2025

A WEEK OF EXPERT INSIGHT AND GLOBAL EXCHANGE

Nicole Rehse
PR/Communication



Growing global relevance of cage-free systems

The importance of cage-free poultry farming continues to rise—not only in Germany and Europe but increasingly on a global scale. This growing relevance was clearly reflected in the diverse participant structure of this year's **LOHMANN SCHOOL CAGE-FREE**, where we were proud to welcome numerous guests from across Asia.

Their presence enriched the event and underscored the international momentum behind cage-free production systems.

Bridging experience levels through tailored programming

Designing a program that catered to both newcomers and seasoned professionals in cage-free systems was a unique challenge for our Technical Service Team. The result was a thoughtfully curated week-long agenda that ensured **every participant—regardless of experience—gained valuable, applicable knowledge.**

The curriculum focused on four core pillars: Animal Health, Flock Management, Nutrition, and Genetics.

Within each area, specific topics were explored in depth, fostering a dynamic exchange of knowledge and experience.

The interactive format—featuring discussions, Q&A sessions, and hands-on workshops—encouraged active participation and made the learning experience both engaging and impactful.



Learning through interaction, not just listening

True to our philosophy, the LOHMANN SCHOOL emphasized **interactivity over passive listening**. Participants were not just attendees—they were contributors. Lively discussions, collaborative workshops, and real-world case studies created an environment where learning was mutual and multidirectional.

To set the tone, the week began with a light-hearted quiz that brought smiles and sparked curiosity. And how about you—would you have known the answers?



A field trip with a feathered focus

On Thursday, the group took a scenic excursion to **Helgoland**, a small German archipelago in the North Sea known for its dramatic red cliffs, rich maritime history, and unique wildlife. The island is especially famous for its seabird colonies, making it an ideal destination for nature enthusiasts.

Guided by a colleague from LDG, participants explored the island's birdlife and learned about the local avian culture. It was a perfect blend of education and enjoyment in a truly special setting.





LOHMANN
BREEDERS

A certificate that carries weight

At the close of the week, participants received **certificates of attendance**—a now highly regarded credential that adds significant value to any professional resume.

These certificates symbolize not only participation but also a commitment to continuous learning and excellence in poultry management.

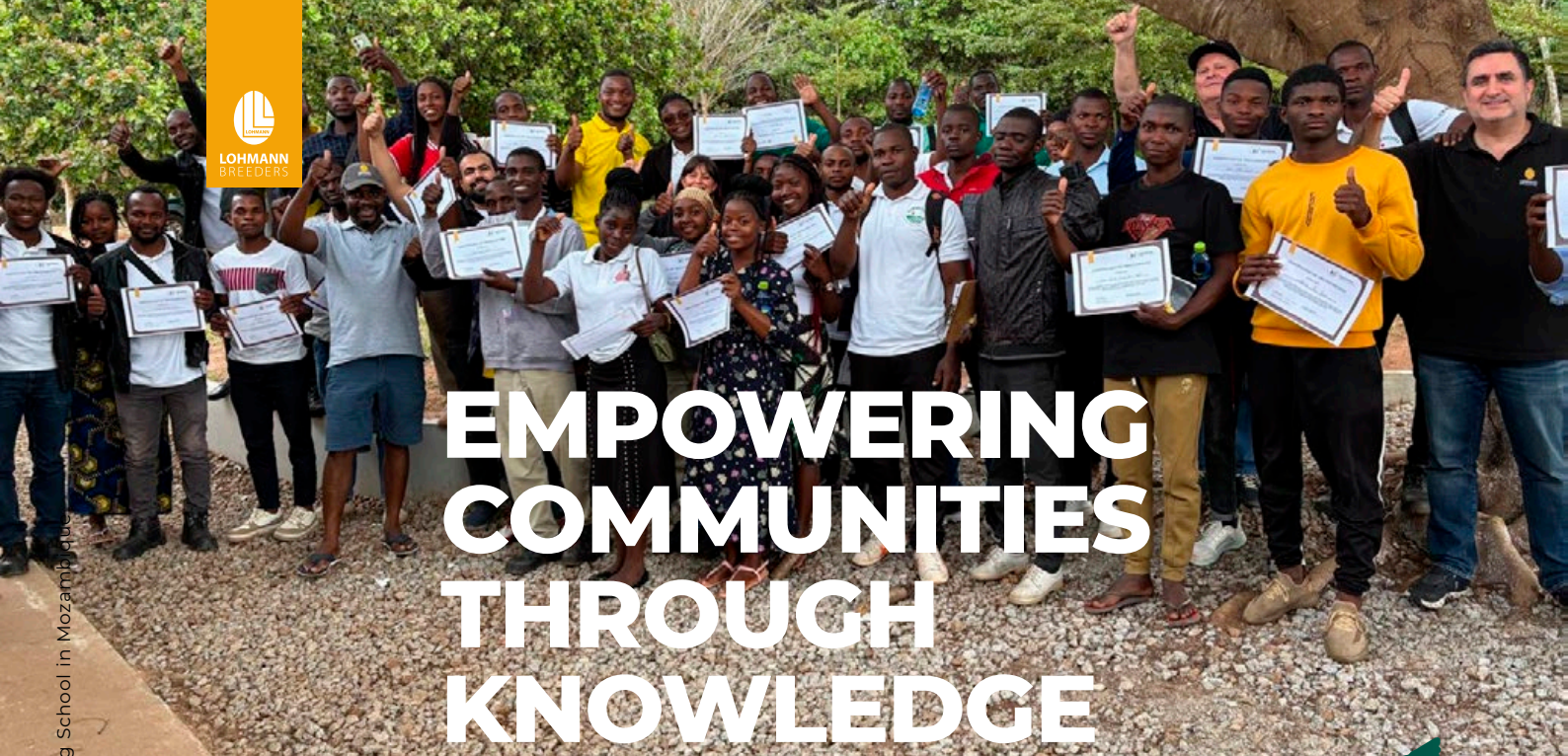


A memorable conclusion to a meaningful week

The 2025 edition of LOHMANN SCHOOL CAGE-FREE was more than just a training—it was a global forum for knowledge exchange, professional growth, and community building.

With expert-led sessions, international perspectives, and a shared passion for innovation in cage-free systems, the event left a lasting impression on all who attended.





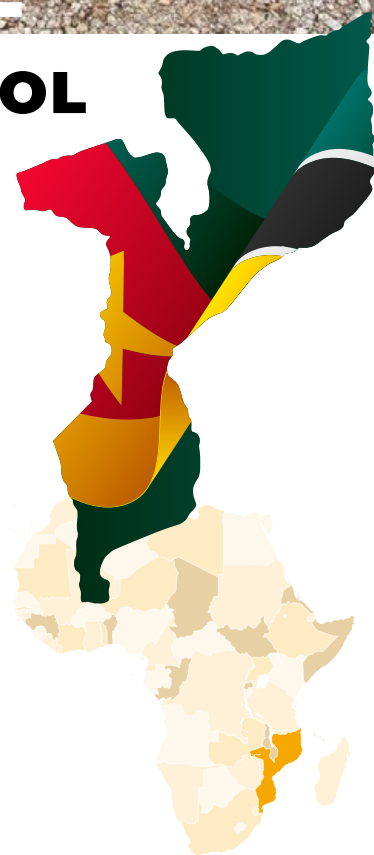
EMPOWERING COMMUNITIES THROUGH KNOWLEDGE

GLOBAL EGG SCHOOL IN MOZAMBIQUE

Nicole Rehse
PR/Communication

From July 18th to 21st, the International Egg Foundation (IEF), in partnership with LOHMANN BREEDERS, brought the **Global Egg School** to Nampula, Mozambique — a region full of potential and home to the very first training in this initiative back in 2019. This year's program welcomed participants from the **Ebenezer Agricultural School** and **New Horizons**, continuing a tradition of meaningful impact through education.

At LOHMANN BREEDERS, we firmly believe that **progress starts with people**. While genetics and performance drive our industry forward, our mission goes beyond productivity — it's about **empowering communities, sharing knowledge**, and **making eggs accessible as a source of nutrition and opportunity**, especially in regions where it is needed most.



More than training — A shared commitment to the future

Together with the IEF, we have developed technical training programs that cover everything from **poultry management and nutrition** to **biosecurity and farm sustainability**. These hands-on sessions are not just about teaching best practices — they are about building **resilience** and **self-reliance** in local food systems.

Thanks to the dedication of our technical managers Farhad Mozafar and Dr. Amr Saad, participants in Mozambique gained practical skills tailored to their regional needs, production conditions, and resource availability.

Whether managing a small village flock or planning for future expansion, they are now better equipped to run farms that are productive, healthy, and sustainable.



Farhad Mozafar
Commercial Technical
Manager Africa &
Middle East / Technical
Marketing Manager

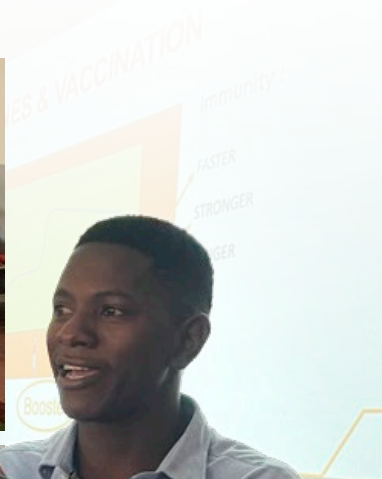


Dr. Amr Saad
Commercial Technical
Manager Africa &
Middle East

When knowledge becomes a tool for change

Training one farmer can mean nutritional support for 30,000 people. That's the scale of impact we are striving for. Education opens doors — not only to improved livelihoods but to stronger communities and healthier futures.

We are proud that the Global Egg School is not just a project, but a movement. A movement that shows: we don't just see profit — we see people. And by sharing our expertise, we invest in the long-term wellbeing of communities around the world.



Poultry as a pathway to food security

Eggs are one of the most complete, affordable, and efficient sources of protein available — a true superfood. Our responsibility as industry leaders is to ensure that this source of nutrition reaches even the most vulnerable regions. The Global Egg School helps make that possible.

By combining world-class genetics with real-world expertise, we help unlock the full potential of eggs — and the people who produce them.

**Because in the end, it's not just about the egg.
It's about what the egg can do.**





Take your notes



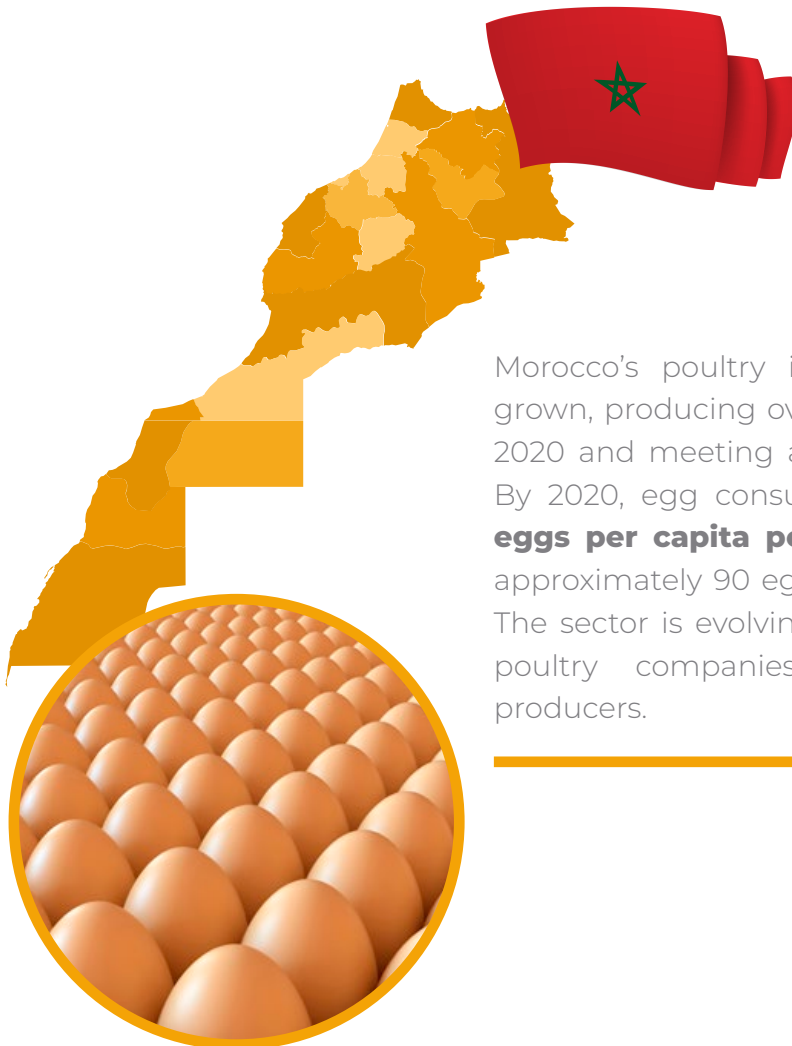
LOHMANN
BREEDERS



SNV

REMARKABLE SUCCESS OF THE LOHMANN MOROCCO SEMINAR

Nicole Rehse
PR/Communication



Morocco's poultry industry has steadily grown, producing over **6.1 billion eggs** in 2020 and meeting all domestic demand. By 2020, egg consumption reached **180 eggs per capita per year**, compared to approximately 90 eggs per capita in 2010. The sector is evolving due to professional poultry companies and skilled egg producers.

The re-introduction of the LOHMANN BROWN in Morocco a decade ago marked the beginning of a strategic partnership between LOHMANN BREEDERS and Société Nouvelle de Volaille (SNV). This collaboration has significantly strengthened their position in the Moroccan layer market.

As a world leader in poultry genetics LOHMANN BREEDERS together with the company SNV held a successful seminar, from May 16th to 18th in Marrakech.

The event brought together more than 160 participants, including egg producers, veterinarians, feed companies, and other industry professionals.



A strategic partnership serving the Moroccan market

This seminar marks a new stage in the collaboration between SNV and LOHMANN, aimed at strengthening the presence of the LOHMANN BROWN in the Moroccan market. Thanks to this synergy, egg producers benefit from high-quality technical support.

High-level technical conferences

The seminar was marked by high-quality scientific presentations, led by LOHMANN BREEDERS experts and SNV team.

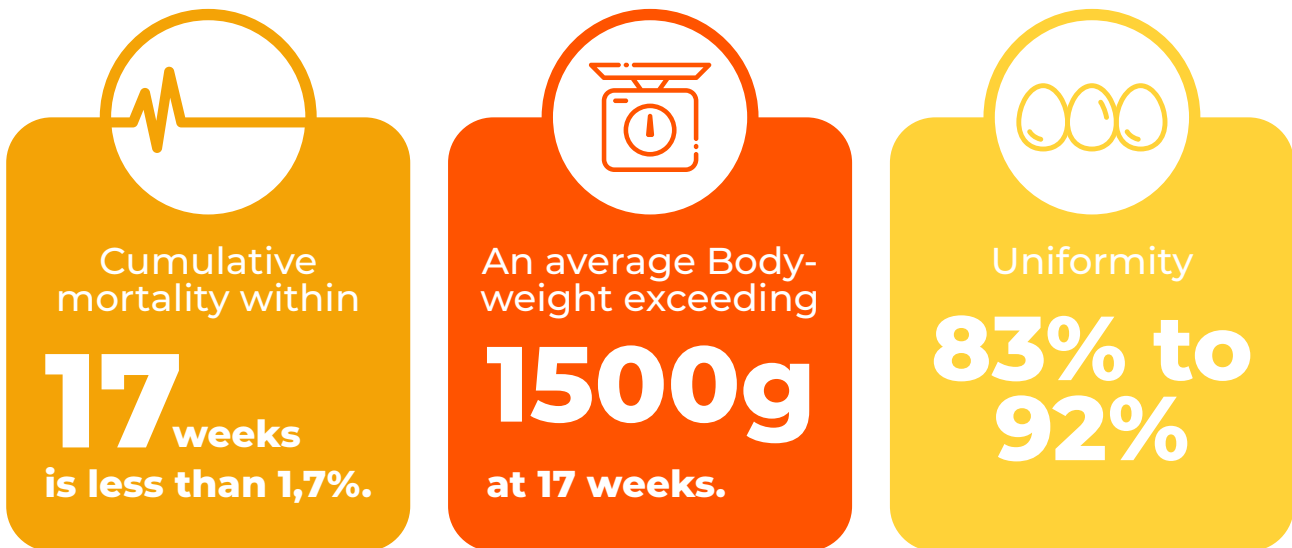
These presentations generated great interest and high satisfaction from all the participants who expressed their appreciation for the relevance and quality of the content.



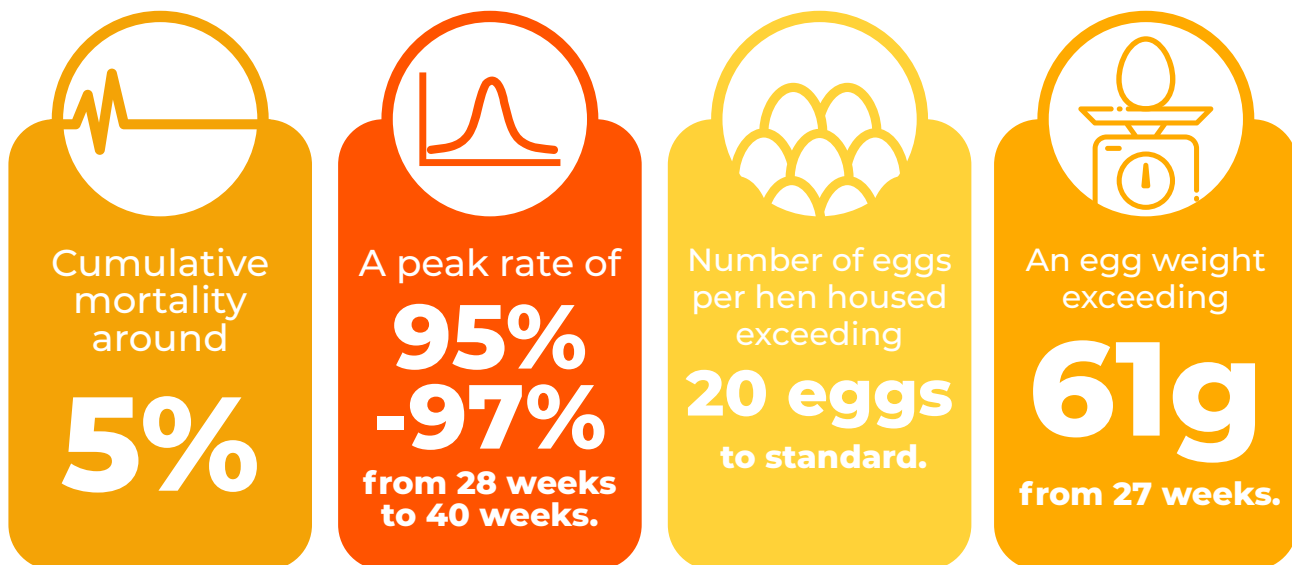
How is LOHMANN BROWN performing in Morocco?

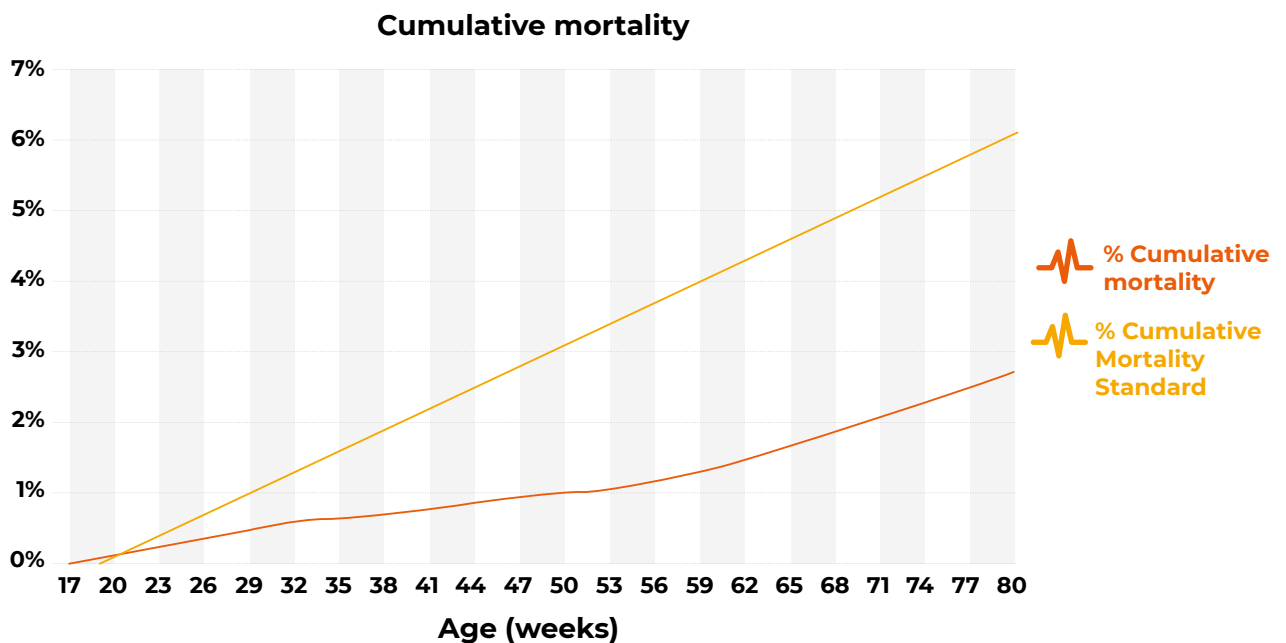
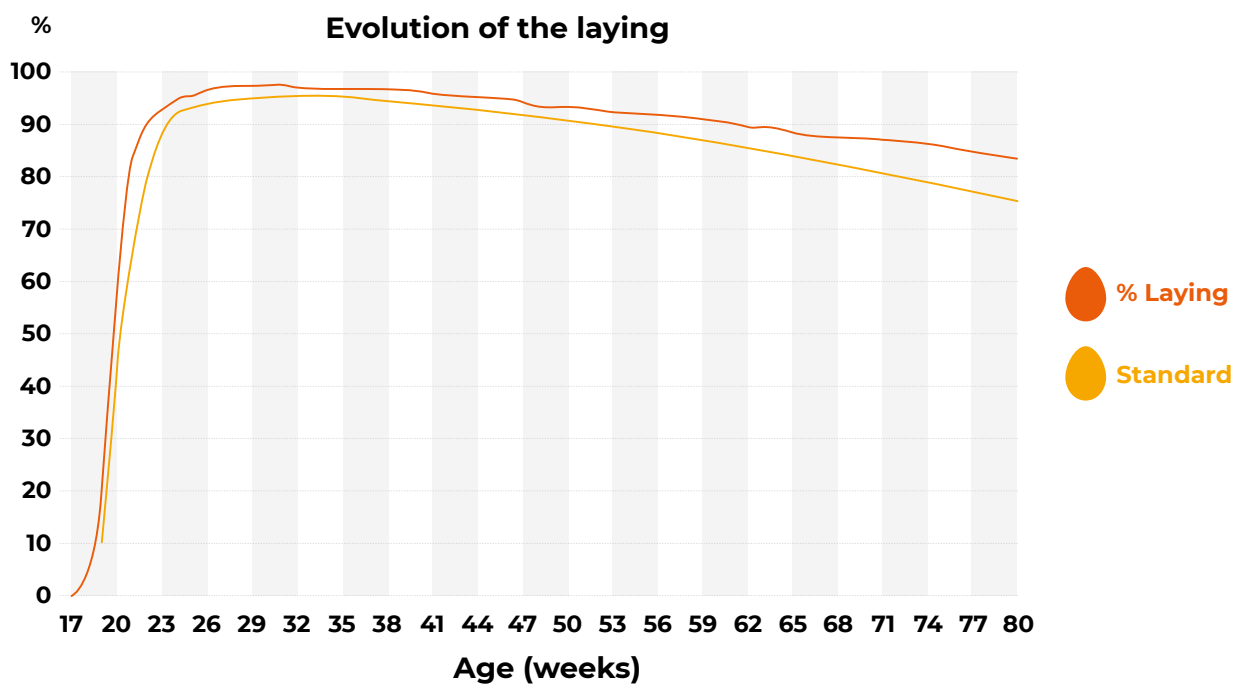
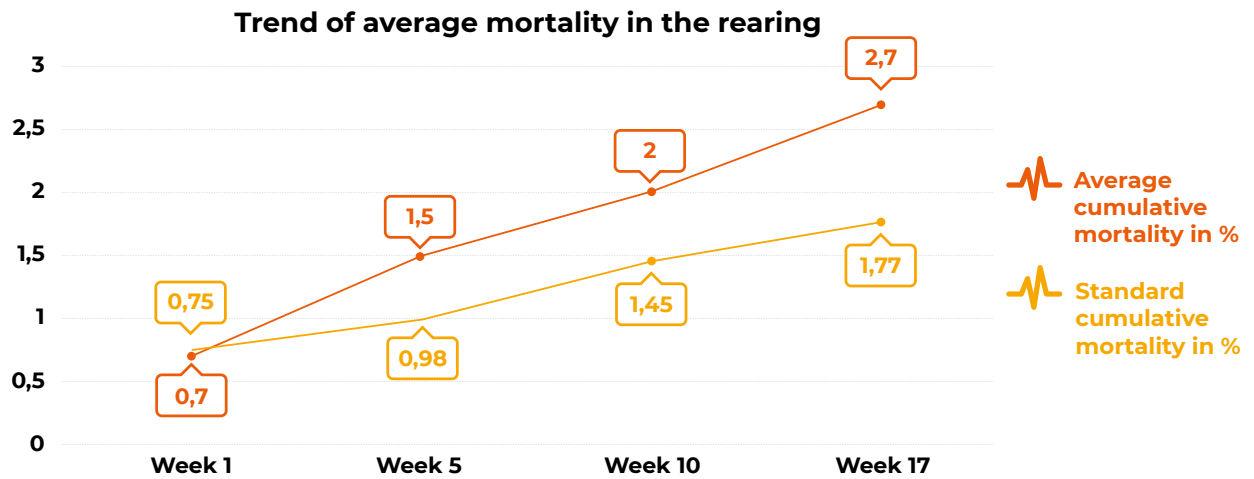
The technical team of SNV presented some outstanding performances of our LOHMANN BROWN layer based on 3 million layers data received from their customers.

In the rearing period:



Production Phase at 95 weeks:



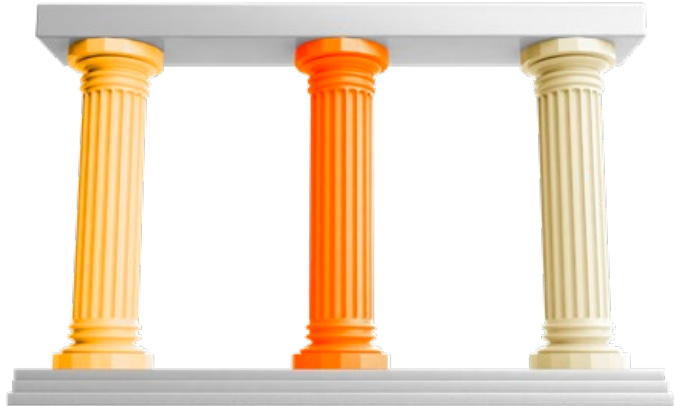


A positive dynamic for the future

This seminar illustrates the continued commitment of SNV and LOHMANN BREEDERS to the sustainable development of the Moroccan poultry sector. It also strengthens the positioning of SNV and the LOHMANN pullet in the field.

The LOHMANN BROWN strain has established itself as a reference in Morocco, thanks to its exceptional productivity, robustness, and economic profitability.

**PRODUCTIVITY
ROBUSTNESS
ECONOMIC PROFITABILITY**



According to the latest estimates (2024), our market share in Morocco is estimated at 40 %, and we aim for 45 % in 2025 (based on a market of 16-17 million pullets), reflecting the growing confidence of egg producers in Morocco.







LOHMANN
BREEDERS

LOHMANN BREEDERS SHINES AT VIV ASIA 2025 IN BANGKOK

Nicole Rehse
PR/Communication

EVENTS | LOHMANN BREEDERS Shines at VIV ASIA 2025 in Bangkok



A Vibrant Presence at VIV ASIA

LOHMANN BREEDERS proudly reflects on its successful participation at VIV ASIA 2025 in Bangkok.

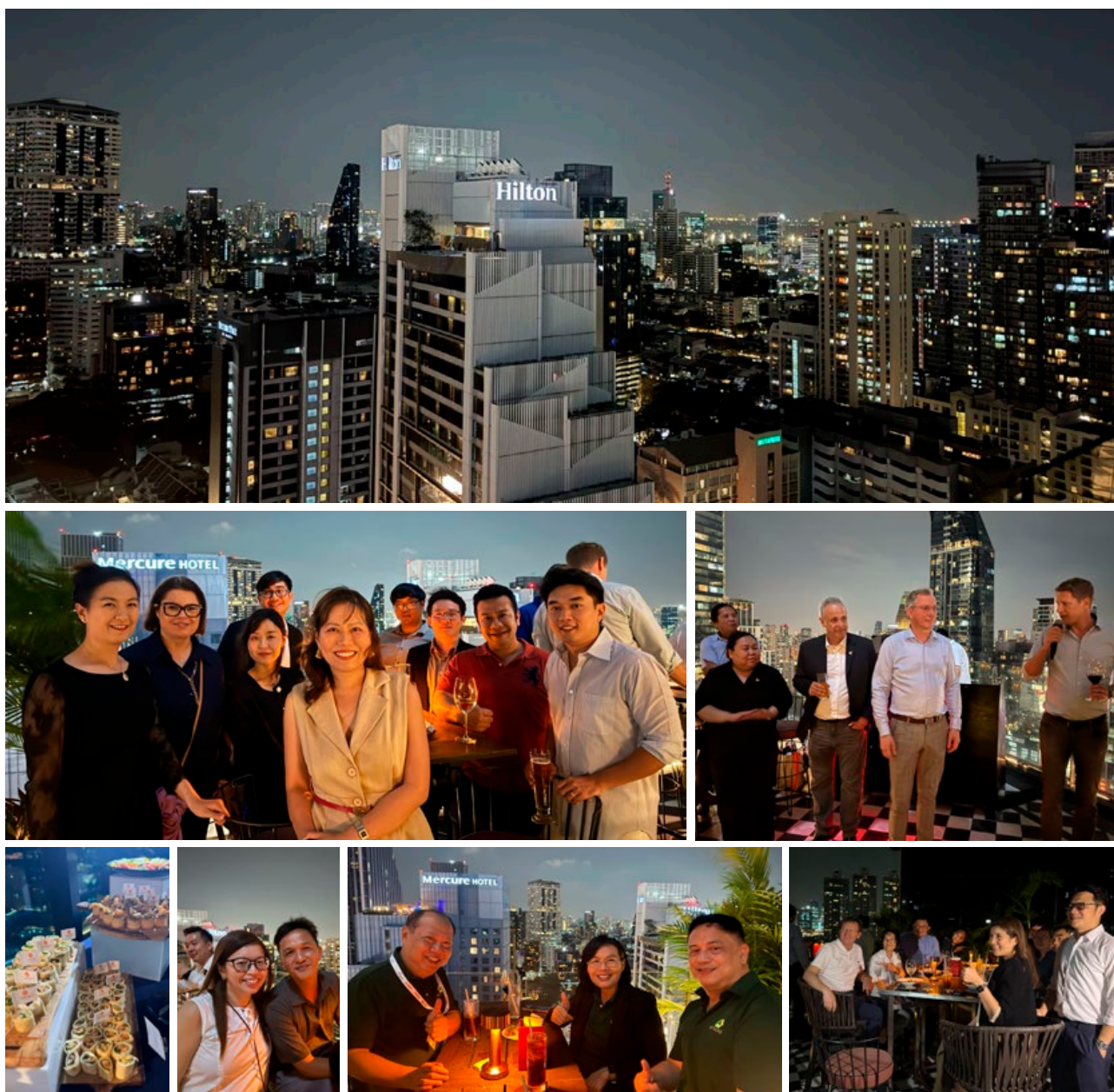
Our vibrant booth attracted significant attention, hosting esteemed delegations from various Thai ministries, key industry leaders, and valued customers.

The enthusiastic turnout led to many insightful discussions, reinforcing our existing partnerships and fostering new connections within the industry.

LOHMANN SPECIAL Evening: A Cherished Tradition

A major highlight of our event presence was the much-anticipated LOHMANN SPECIAL evening at a stunning rooftop venue overlooking Bangkok's spectacular skyline.

This exclusive gathering has become a cherished tradition, providing a relaxed and engaging atmosphere ideal for deepening relationships with our clients and industry colleagues.

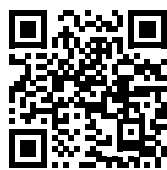


Celebrating the Relaunch of Our Website

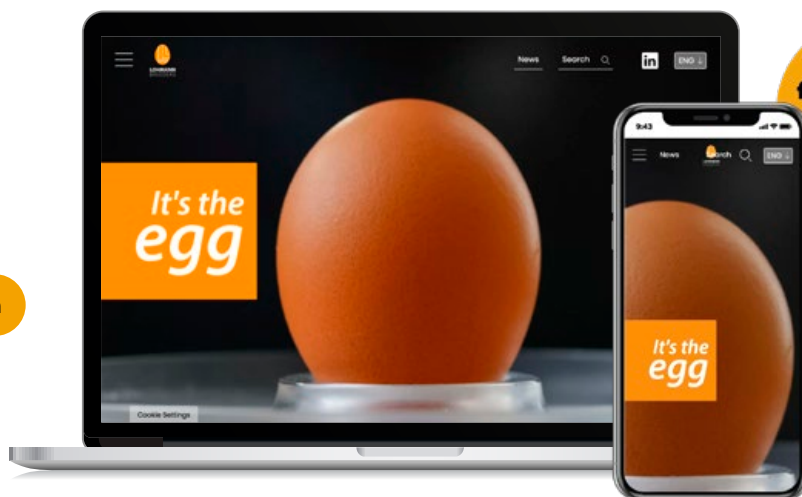
Additionally, we celebrated another exciting milestone during VIV ASIA: the relaunch of our newly designed LOHMANN website.

Featuring a fresh appearance and an improved user experience, our new digital platform represents our ongoing commitment to innovation and customer satisfaction.

You can explore the new website here:



www.lohmann-breeders.com



**Perfect
for mobile
viewing**



Prestigious Visits from Industry Representatives

A standout moment during the exhibition was a prestigious visit to our booth by high-ranking industry representatives, notably including Khun Poonpong Nainapakorn, Spokesman of the Thai Ministry of Commerce, and senior representatives from Betagro (Livestock Industry), Thai Union (Fishery Industry), and Thanawut Layer Industry.

Additionally, we were honored by an extra distinguished delegation visit featuring Mr. Kittirat Na Ranong, Advisor to the Prime Minister; Khun Jiraporn Chaiyasan, Staff of Thai Trade Delegation; Mr. Prommin Sitabuth, Chief of Agricultural Technology Policy; and Dr. Pollawat.

These visits, marking LOHMANN BREEDERS as one of only five selected booths for official delegation visits, highlight the importance of our contributions to industry innovation.



Leading the Way in Poultry Breeding

Our Managing Directors, Jurek Grapentin and Jörg Heier, led meaningful exchanges on current developments, industry trends, and innovations, reaffirming our leadership role in livestock and poultry breeding.



Jurek Grapentin
Commercial
Managing Director



Jörg Heier
Managing Director
of Operations

We deeply appreciate the dedicated LOHMANN BREEDERS team for their outstanding efforts in showcasing our company's strengths and vision.

Gratitude to Our Visitors and Partners

We extend our heartfelt thanks to all our visitors and partners for their enthusiastic participation and valuable contributions to this memorable event.

LOHMANN BREEDERS eagerly looks forward to welcoming you again at future events!



¡BIENVENIDOS!



LOHMANN
BREEDERS

¡BIENVENIDOS!



LOHMANN
BREEDERS

¡BIENVENIDOS!



LOHMANN
BREEDERS

LOHMANN
BROWN-CLASSIC

LOHMANN
BROWN-LITE

LOHMANN
BROWN-CLASSIC

LOHMANN
BROWN-LITE

It's
the
egg

LOHMANN BREEDERS AT LPN MIAMI 2025

KNOWLEDGE, LEADERSHIP & INNOVATION

Xinye Yang
Marketing



The LPN Congress & Expo 2025 took place from October 7–9 in Miami, USA, bringing together over 3,000 attendees and 900 exhibitors from across the Americas. As one of the leading poultry events in Latin America, LPN once again proved to be an exceptional platform for knowledge exchange, innovation, and networking.

LOHMANN BREEDERS, as one of the main sponsors of the event, was proud to play an active role in this year's edition, sharing technical expertise, presenting scientific updates, and engaging with partners and customers from all over Latin America.

During the event, **Jurek Grapentin, Commercial Managing Director**, delivered an insightful address highlighting LOHMANN's commitment to excellence, global collaboration, and the continuous development of high-performance layer genetics tailored to the needs of diverse markets.

Across three inspiring days, LOHMANN experts contributed to discussions on genetics, flock management, and nutrition, reflecting the company's dedication to science-based performance and continuous improvement.

Key LOHMANN Contributions at LPN Miami 2025



Dr. Matthias Schmutz, Director R&D, highlighted the latest advances in layer genetics and productivity potential.

Thomas Calil, Product Manager, moderated a round table on generational leadership and business continuity in the poultry industry.



Juan Valle, Global Technical Manager Nutrition, shared strategies to support long production cycles, focusing on mineral balance, shell quality, and energy management.

Braulio Ruiz, Commercial Technical Manager – Americas, emphasized the importance of lighting programs in optimizing flock uniformity and egg quality.



Nelson Aguilar, Commercial Technical Manager – Americas, presented *"Maximizing the Potential of Birds: Preparation and Production Period for Optimal Performance"*, offering practical insights on preparation periods, nutritional strategies, and management tools to unlock full flock potential.

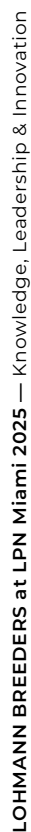


Beyond LOHMANN's contributions, this year's LPN also focused on major industry challenges, including mycotoxin control, raw-material management, and sustainability in poultry nutrition, underscoring the sector's continuous drive for progress.

With its blend of science, innovation, and practical experience, LPN Miami 2025 once again demonstrated how collaboration and technical excellence are shaping the future of poultry production in Latin America, and how LOHMANN continues to lead the way where performance meets innovation.

LOHMANN BREEDERS – It's the egg





FROM HOT SPRINGS TO THAI KITCHENS:

LOHMANN EGGS IN ONSEN STYLE

Eduardo Bernardi
Regional Commercial Technical Manager Asia



LOHMANN eggs in Thailand are now also part of the local options the consumers can pick for their “onsen tamago” – or “hot spring eggs”.



What Are Onsen Eggs – and Why Are They So Special?

“A traditional Japanese delicacy is making waves across Asia with its silky texture and subtle flavor.”

For those who don't know, an onsen egg is a processed egg dish which is becoming quite popular over the borders of its origin Japan and across different Asian countries.

“Onsen tamago”, which literally translates to “hot spring egg” in Japanese, originates in the practice of cooking eggs in the natural hot springs of Japan, where the temperature-stable waters provide the perfect conditions for achieving a unique texture.

By being slow-cooked for prolonged periods under lower-than-boiling temperatures, this allows the egg whites to set into a delicate, silky-smooth custard-like consistency, while the yolk remains firmer than the usual soft-gooey, but still creamy.



Thailand Joins the Trend – with LOHMANN Inside

“LOHMANN BROWN-CLASSIC layers are now part of Thailand's growing onsen egg market through Betagro.”

Betagro is one of Thailand's top food groups, and one of LOHMANN distributors in the country, with sales of LOHMANN BROWN-CLASSIC day-old-chicks and a large scale use of LOHMANN BROWN-CLASSIC commercial layers in their own integrated farms.

With a broad range of products and brands and even their own chain of grocery retailers, Betagro developed their onsen eggs for their S-Pure and Betagro lines.



S-Pure: Quality from Farm to Fork

“How Betagro's antibiotic-free, cold chain-secured S-Pure products are raising the bar for health-conscious consumers.”

Particularly the S-Pure products (including fresh eggs, chicken meat, pork and processed food products) are of great appeal to a top layer of health-conscious Thai consumers, being carefully selected using a natural farming process that starts at the selection of appropriate breeds, to the farming system and nutrition of the animals.

There is no use antibiotics or any added growth promoters or other such chemicals from birth to the production process. S-Pure products are maintained under a cold chain system that ensures freshness and quality until it reaches the consumers' hands.



Creamy, Nutritious, and Versatile

“From solo snack to gourmet topping: onsen eggs are becoming a protein-packed favourite in Thai dishes.”

Onsen eggs are traditionally consumed cold or slightly warm, on their own, as a quick, tasty meal, with a dash of a special sauce (dashi + soy sauce + mirin).

However, they are becoming very popular as an addition to several other dishes, such as noodle dishes, salads, pasta or rice, adding a formidable source of high-quality protein in the shape of creaminess and a delicious flavour and sweetness that one could only get otherwise with an addition of raw eggs.

It should be said that the temperatures in which onsen eggs are cooked are high enough to minimise any risk of bacterial contaminants as compared to the odds of contamination in raw eggs.



A Niche Product with Big Potential

“Still a small share of the egg market, onsen eggs represent growing opportunities for value-added products.”

The consumption of onsen eggs in Thailand is still shy as compared to branded fresh eggs and a crushing majority of unbranded eggs.

Both S-Pure and Betagro onsen eggs are also only two of the products in these lines that include boiled, soft boiled and hard-boiled eggs, in addition to a variety of fresh eggs and different added values.



LOHMANN & Betagro – A Perfect Match

Nevertheless, for this venture into a product with a high appeal to our eyes and tastebuds and for all other egg products, Betagro knows well they have the right partner with us.

LOHMANN BREEDERS - It's the egg!

Try It at Home – The LOHMANN Way

66 Curious? Here's how to make the perfect onsen egg using your rice cooker – straight from our Asia-Pacific expert. 99

If you want to know how onsen eggs look and taste like, you can prepare them in the comfort of your own home, recipe from Eduardo Bernardi, our RCTM for Asia-Pacific.

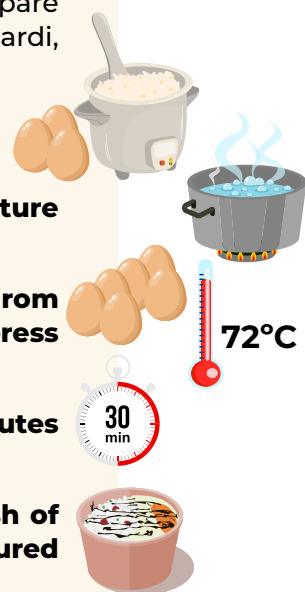
All you need is fresh LOHMANN eggs and a rice cooker.

Add 5 cups of boiling water and 1.5 cups of room temperature water to the rice cooker

Carefully lay 6 LOHMANN fresh eggs (could be straight from the fridge) into this $\approx 72^{\circ}\text{C}$ water, close the cooker and press “keep warm”.

Remove the eggs from the cooker after exactly 30 minutes and put them in the fridge.

Once they are cold, crack an egg open into a cup, a dash of any sauce or a pinch of salt, and it will be ready to be devoured with gusto.



Whether for onsen eggs or any other egg product: Betagro trusts in the consistent performance of LOHMANN breeds.



ใส่ใจเพื่อชีวิตที่ดี



SICHUAN SUNLOHMANN (SLB)

INTRODUCTION & BUSINESS HIGHLIGHTS

Nicole Rehse
PR/Communication



Sichuan Sunlohmänn Agricultural Technology Co., Ltd. (SLB) is a Sino-German joint venture enterprise integrating PS breeding, hatching, commercial layers sales and technical services. The company originally belonged to Sichuan Sundaily Village Ecological Food Co., LTD., and reached a strategic cooperation with LOHMANN BREEDERS GmbH in 2020, the company changed to a Sino-foreign joint venture, renamed Sichuan Sunlohmänn Agricultural Technology Co., LTD.

The company consists of Songtao Sunlohmänn Agricultural Technology Co., LTD., Guangyuan Sunlohmänn Agricultural Technology Co., LTD., Hubei Sundaily Village Poultry Co., LTD., Yichang Sunlohmänn Agricultural Technology Co., LTD., Sichuan Sunlohmänn Agricultural Technology Co., LTD. Nanyang branch, Sichuan Sunlohmänn Agricultural Technology Co., LTD. Xiangyang Branch and other sub-companies

The company has built three "all in and all out" PS farms, the parent stock scale is 1 million sets, and the annual supply of DOCs to the market can reach more than 80 million.

The company has 240 employees, with an average age of 40.9 years old, and a total of 79 employees with higher education background. The company consists of six business units, including:

Marketing center.

Production center.

Technology center.

Technical service department.

Financial center.

Operation.

Human resources center.



240
employees



40.9
years old

To promote the company in high efficiency and professional development.

The company adopts the joint farming mode of company + farmers, which can provide more than 150 jobs to farmers in the surrounding towns and villages and increase the farmers' income of about ¥20,000.00/year.



◀ Incubation workshop



▶ Hatching



▲ Yanting PS farm



▲ PS farm

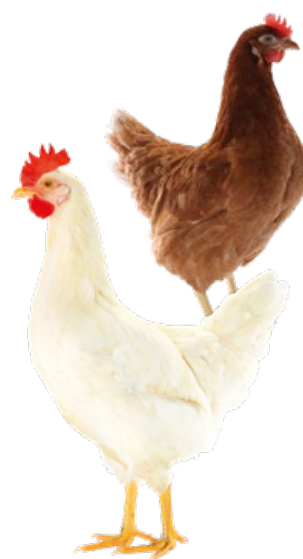
Business highlights

Since 2013, the company started importing LOHMANN PINK GP from LOHMANN BREEDERS GmbH, and began to carry out GP breeding, PS propagation, commercial layers hatching and other businesses.

It has established a unique epidemic prevention system of “moderate scale, all in and all out of birds, dispersed breeding and independent incubation”, unified feed nutrition standards, feeding management standards and biosafety standards, and to ensure the high quality of chicks, the best production performance of LOHMANN PINK layers.

About breeding facilities and equipment, the company uses large-size cage breeding equipment, male and female natural mating, to get better genetic and excellent production performance.

As the exclusive supplier of LOHMANN PINK in China, LOHMANN PINK supplied by Sunlohmenn Company, as well as LOHMANN BROWN LITE, has been confirmed by the large-scale layers farm with its excellent performance advantages.



▲ Egg grading

Production and service management model

The company has established a 5+1 biosafety management system for closed-loop strict control of the farm, fundamentally ensuring the safety and quality of DOCs:

5 Flow control

People flow, logistics, traffic flow, biological flow, air flow.

1 set of standards

1 set of standard unified implementation.

An independent supervisory authority.

1 audit in one month.

From the needs of customers, to provide customers with “butler” services.

Company honors

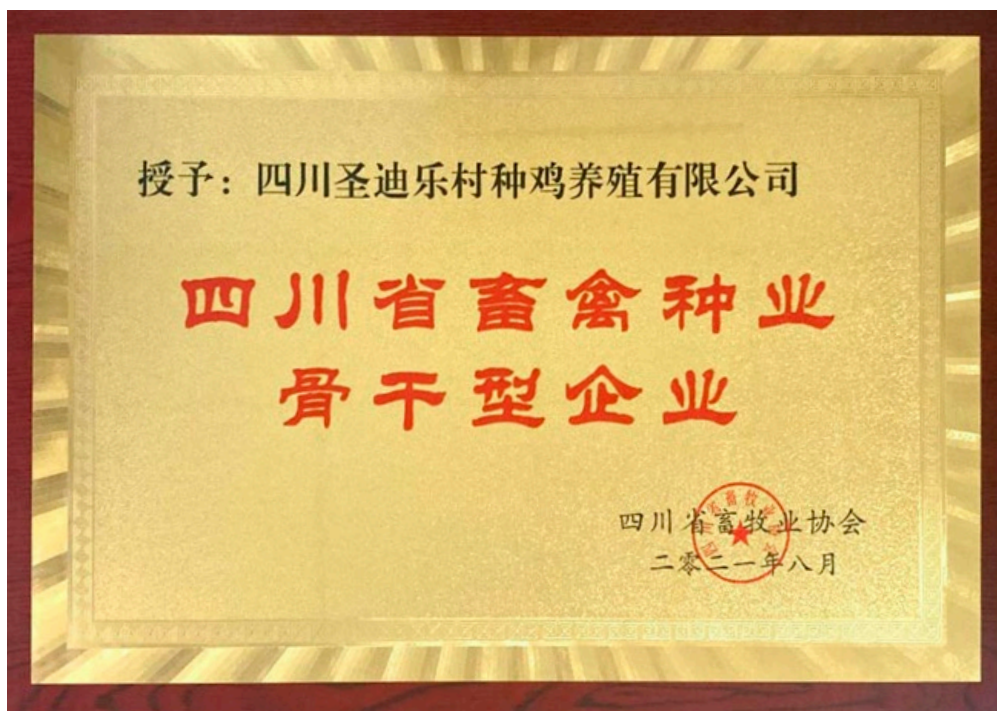
In 2014, it was awarded “LOHMANN GP Demonstration Farm” by LOHMANN company.



In 2014, it was awarded “LOHMANN GP Demonstration Farm” by LOHMANN company.



In 2021, it was awarded the “Backbone Enterprise of Livestock and Poultry seed Industry in Sichuan Province” by Sichuan Animal Husbandry Association.



In 2021, the company was evaluated on site by the China Center for Animal Disease Prevention and Control, and was identified as “highly pathogenic avian influenza, Newcastle disease, avian leukemia, salmonellosis purification field”.



In 2024, after on-site audit and evaluation by the Sichuan Provincial Department of Agriculture and Rural Affairs, the PS farm of Guangyuan Sunlohm Agricultural Technology Co., LTD., a subsidiary of the company, was identified as a “provincial avian leukemia (non-immune) purification farm”.



Big event in recent years

In 2019, the scale of the company was expanded, Guizhou Songtao base was put into production, and the scale of PS increased by 400,000.



▲ Songtao Dagao PS farm



▲ Songtao Panxin PS farm



▲ Songtao Taiping Hatching center

In 2021, the newly built China's first fully automated incubation center were put into operation, increasing the annual incubation capacity by 50 million.

In 2021, it reached a strategic cooperation with LOHMANN BREEDERS GMBH and officially changed to a Sino-foreign joint venture.



In 2023, the company was renamed "Sichuan Sunlohm Agricultural Technology Co., LTD."; In the same year, the company signed exclusivity agreement with LOHMANN BREEDERS GMBH for LOHMANN PINK in China, "the sole agent of LOHMANN PINK in China", and the company became the exclusive supplier of LOHMANN PINK in China.



About sales

The company's sales network is centered on three bases, covering the surrounding provinces and cities, mainly: Sichuan, Chongqing, Hubei, Hunan, Yunnan, Guizhou, Guangxi, Guangdong, Fujian, Hainan, Anhui, Hebei, Shaanxi, Shanxi and other provinces and cities.

The main customer groups are layers farms, pullets farms and dealers in various provinces and cities, accounting for 55%, 30% and 15% respectively; Maintain long-term good cooperative relations with the layer farms such as CP, DQY, Yihao, Jinlong and Hainan Nongken.



Future vision

Sichuan Sunlohm, as the source of commercial layers industry chain, is a landmark and pioneering project in the modern egg and poultry industry, and a strategic and basic core industry.

The company will closely focus on the key tasks of revitalizing the poultry seed industry, layout and construction of first-class poultry industry landmark projects, build poultry germplasm resource protection and utilization system, build poultry commercial breeding system, and achieve the goal of scientific and technological self-reliance and independent control of seed sources.

Guizhou Songtao 600,000 PS chicks project is an important development strategy of the company. The output has increased year by year, and it is expected that it will exceed 100 million birds in 2025.

The company has always been adhering to the development concept of "high quality, high service and high value", and has built the company into a leading enterprise of PS chicks to achieve sustainable and high-quality development.

AVICOLA SOFIA

A LEGACY OVER 40 YEARS IN THE MARKET, JUST LIKE THE STORY OF LOHMANN BROWN

Thomas Abdo Calil
*Commercial Technical Manager
Americas/Product Manager*



The most traditional poultry company in Bolivia, Avicola Sofia, traces its roots back over 40 years to its founding by the visionary entrepreneur, don Mario Anglarill Salvatierra. Starting small with commercial layers, Don Mario built the company on the strong moral values instilled by his mother, Sofia.

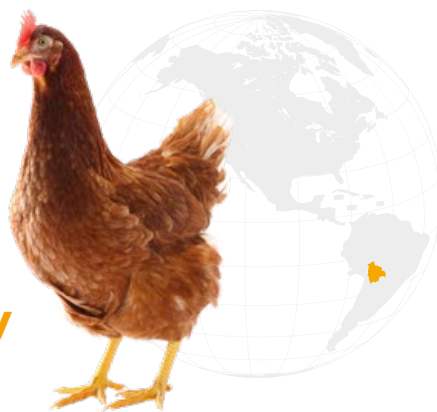
These values—honesty, humility, sincerity, dedication to hard work, continuous improvement, solidarity, and generosity—became the bedrock of the business that still guides it today.

While Avicola Sofia expanded and diversified its operations within various segments of the animal protein industry, LOHMANN BROWN gaining ground and being established its presence in leading farms around the globe.

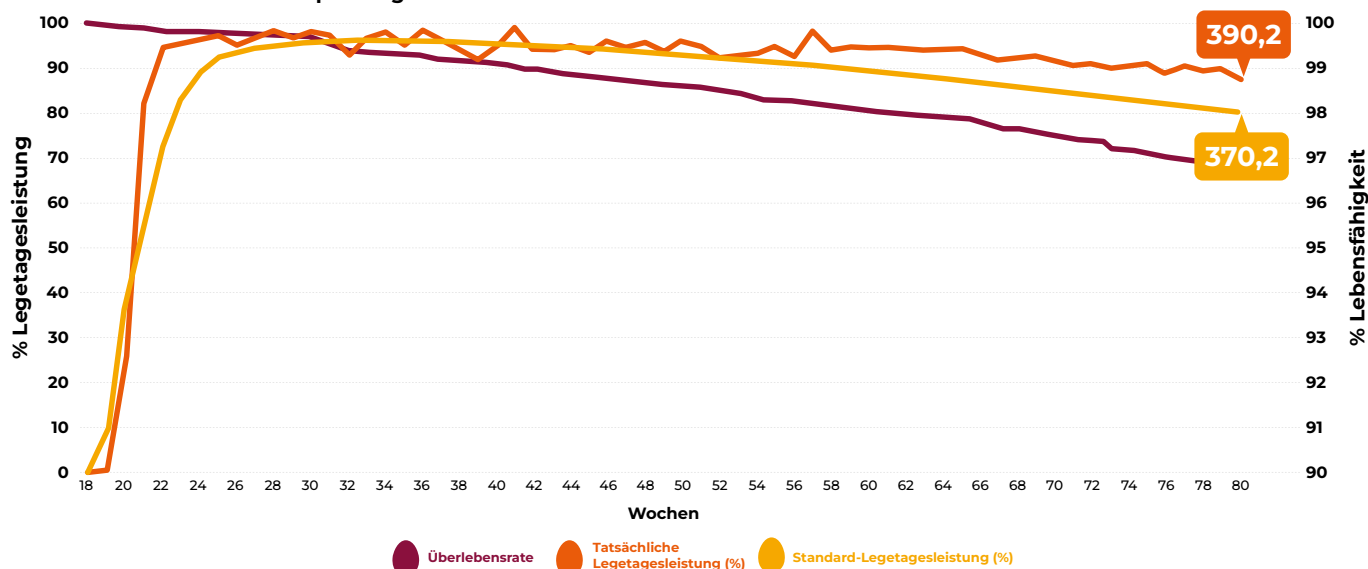
True to its vision of becoming the preferred food provider for Bolivian families on all occasions, Avicola Sofia decided the time had come to enter the egg market again with a professional and large-scale approach.

After conducting extensive research and consulting international experts on best practices in production, advanced housing systems and equipment as well as genetics, the decision was made: LOHMANN BROWN was the ideal choice for the Bolivian market. And the results speak out so.

With state-of-the-art facilities, climate-controlled closed houses, top-tier biosecurity systems, and proven expertise in poultry production, Avicola Sofia's initial results have already ranked in the top 5% globally.



Die Kombination aus einer herausragenden Legetagesleistung und einer bemerkenswerten Vitalität ergibt eine Gesamtleistung von 390,2 Eiern pro eingestallter Henne und übertrifft den Standard damit um 20 Eier

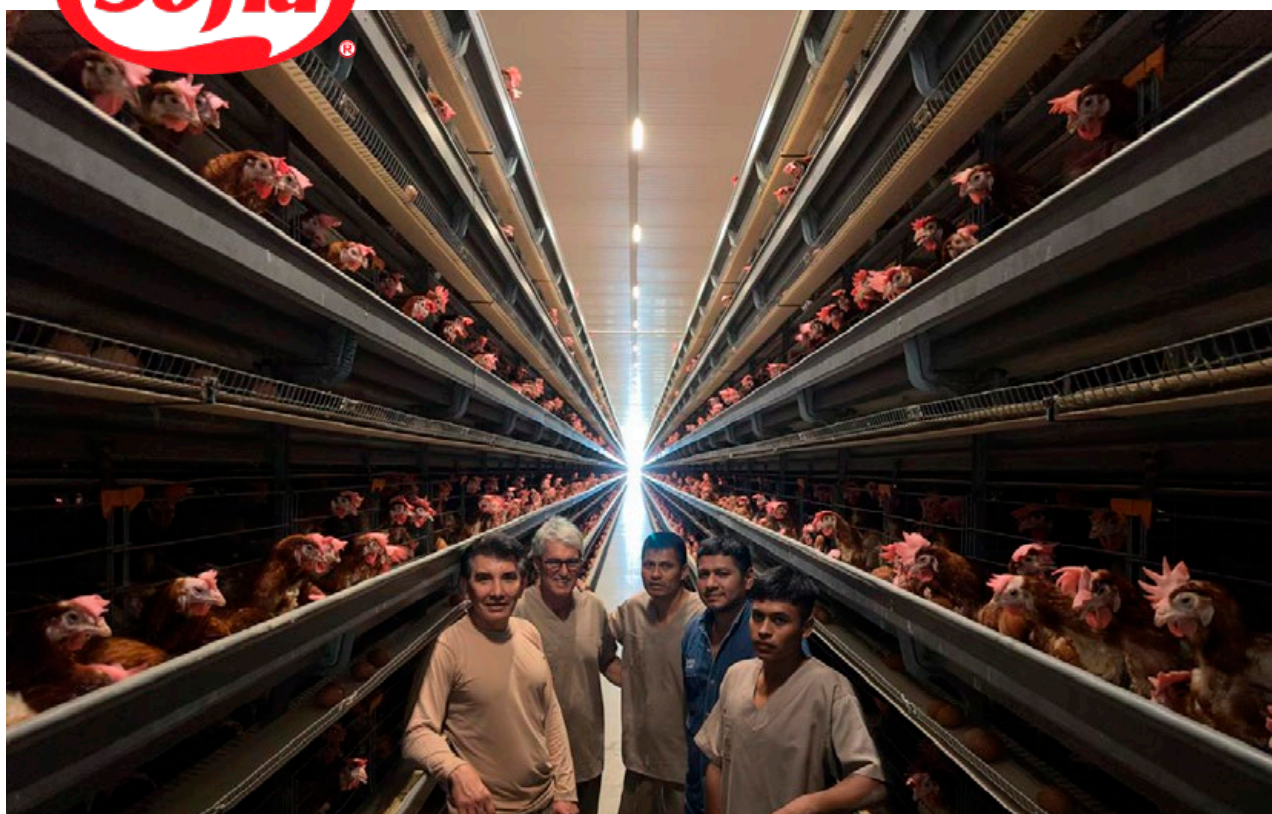


Today, we proudly celebrate 40 years of LOHMANN BROWN alongside our newest partner, Avicola Sofia, as they begin their journey in the egg industry with day-old chicks initially supplied by LOHMANN do Brasil.



**LOHMANN
DO BRASIL**

We are excited and confident about this productive partnership. After all, “En Sofía, se confía!” (In Sofia, we trust!)



▲ Dr Jimmy (Avicola Sofia), Dr Marcos (Lohmann do Brasil), Jose (Avicola Sofia), Oliver (Avicola Sofia) and David (Avicola Sofia), surrounded by our curious high performing LOHMANN BROWN hens. A top-notch housing system, coupled with exceptional after-sales service from LOHMANN do Brasil and the local team expertise, forms the foundation of the outstanding results achieved by the Avicola Sofia team.



Take your notes



BOUNTY FARMS CELEBRATES 25 YEARS OF PARTNERSHIP WITH LOHMANN

FROM 5,000 PS CHICKS TO SOUTHEAST ASIA'S LARGEST PARENT STOCK CUSTOMER

Xinye Yang
Marketing

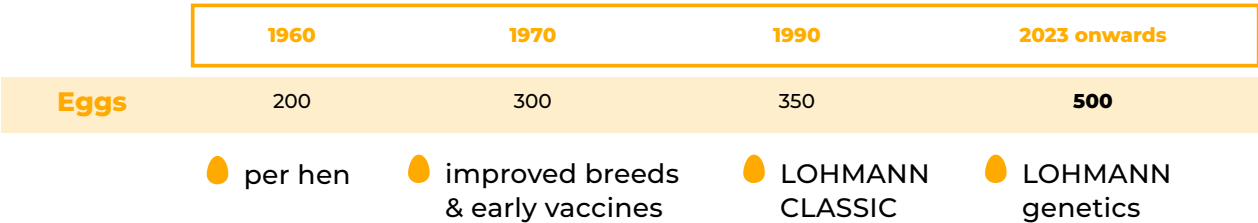
Bounty Farms marked its 25th anniversary of partnership with **LOHMANN BREEDERS** in 2024 in Cebu, Philippines, a milestone that reflects its journey from a modest family farm to one of Southeast Asia's leading layer producers. This long-standing collaboration has contributed significantly to the development of modern layer production in the Philippines, and **LOHMANN is proud to have supported Bounty throughout this remarkable growth.**

The partnership began in the early 2000s with 5,000 LOHMANN Parent Stock day-old chicks. Today, Bounty stands as LOHMANN's largest Parent Stock customer in Southeast Asia, demonstrating how our cooperation has expanded and strengthened over time.

A Journey Rooted in Humble Beginnings

Bounty's journey shows an impressive transformation, starting from a small backyard flock in Bantayan in the 1960s. With the introduction of LOHMANN LSL CLASSIC, and later LOHMANN LSL - EXTRA and newer generations, productivity climbed continuously, **from roughly 350 eggs per hen in the 1990s to nearly 500 eggs per hen today, supported by ongoing improvements in LOHMANN layer genetics.**

From 200 Eggs to 500 Eggs — A Genetic Revolution



This dramatic improvement reflects both LOHMANN's genetic progress and Bounty Farms' commitment to top-tier management and innovation.

More Than Performance — A Shared Vision for Sustainability

At the recent **Bounty Poultry School in Cebu**, participants gained new insights into how LOHMANN's genetics contribute not only to productivity, but also to lowering the **carbon footprint** of animal protein. Producing 100 grams of protein from eggs requires significantly fewer resources compared to cattle, demonstrating how efficient layer genetics contribute to sustainability goals.

LOHMANN BREEDERS congratulates Bounty Farms on 25 years of successful collaboration.

The path from 5,000 chicks to regional leadership reflects a partnership built on strong management practices, strategic vision, and reliable genetic advancement.

LOHMANN BREEDERS – It's the egg

25 YEARS



Shaping the Future Today

LOHMANN
BREEDERS

It's the egg - it's 600!



www.lohmann-breeders.com

BREEDING FOR SUCCESS... TOGETHER



**LOHMANN
BREEDERS**

GROWING FOR SUCCESS... TOGETHER!

Nicole Rehse
PR/Communication

At LOHMANN BREEDERS, success is built on people – their passion, dedication, and teamwork.

And this year, our LOHMANN family continues to grow!

We are delighted to welcome several new colleagues who bring fresh energy, diverse experience, and new perspectives to our already strong team.

Each of them contributes in their own way to our shared mission:
breeding for success... together!

Meet the new faces behind the orange egg

From **Logistics to Sales, from Marketing to Genetics** – our new colleagues are already contributing their expertise and enthusiasm to strengthen our global LOHMANN network.

Each of them brings unique skills, ideas, and motivation that help us continue what defines LOHMANN: connecting performance with people – and turning knowledge into success.

Logistics



Marta Lorenzo - Logistics Team Spain



March 2025



Carlos Gullón Gallego - Logistics Team Spain



September 2025

Sales



Danil Alekseevich Tuktashev - Management Assitant to Commercial Managing Director



June 2025



Asad Sultan - Commercial Technical Manager Pakistan



June 2025

Genetics



Dr. Cristina Casto Rebollo - Research geneticist



July 2025

Marketing



Christian Franke - Event Manager



July 2025

Looking ahead – together into 2026

With every new talent joining our team, we grow stronger, more diverse, and even better prepared for the future.

Because at LOHMANN, success is never a solo act — it's the result of teamwork, passion, and the shared belief that **the best is yet to come!**

LOHMANN BREEDERS – It's the egg



CONNECTING THE POULTRY WORLD LOHMANN ON LINKEDIN

Xinye Yang
Marketing

2025 marked another year of growth and connection in LOHMANN BREEDERS' digital presence. With an ever-expanding global community, our LinkedIn page has become a true meeting point for knowledge sharing, innovation, and collaboration across the poultry industry.

As of November 19, 2025, our page proudly reached 12,849 followers, reflecting the growing international interest in LOHMANN's work, expertise, and global network.

In line with our **mission** to make expertise accessible worldwide, we introduced several new themed content series to make our communication even more dynamic and informative:

Teggnical Insights – practical know-how and scientific expertise from LOHMANN's global team of specialists, partially based on our TOOLBOX articles.



Each post connects science with practice, offering guidance that supports better decisions in layer management. From genetics to nutrition, flock management to biosecurity, Teggnical Insights helps transform knowledge into performance.



Eggstraordinary Insights – inspiring information about the nutritional, social, and environmental value of the egg — now also integrated into our official website for broader reach and easier access.



Designed to make science engaging and accessible, each post highlights why the egg remains one of the most efficient, sustainable, and nutrient-dense foods worldwide.



LOHMANN Schools & Events – highlights from our international training programs, conferences, and technical schools.



Here we share key learnings, expert insights, and memorable moments from our global activities, bringing together knowledge, practical experience, and strong partnerships across the poultry industry.

LOHMANN on Tour – real-world insights from our experts visiting customers, farms, and distributors worldwide.

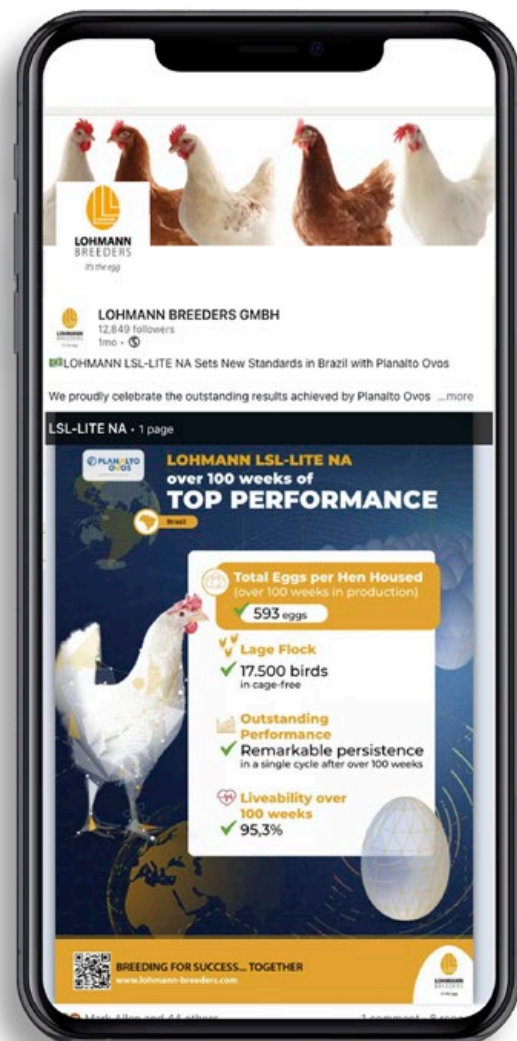


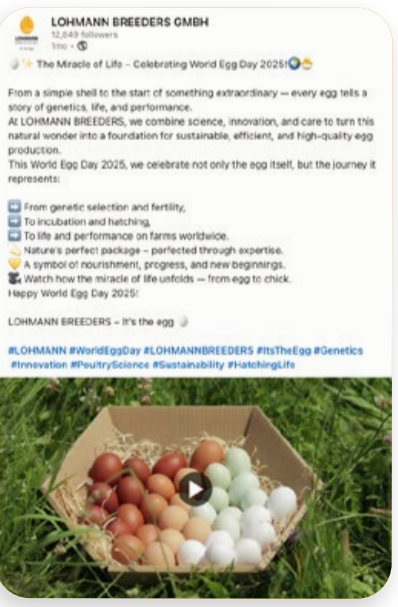
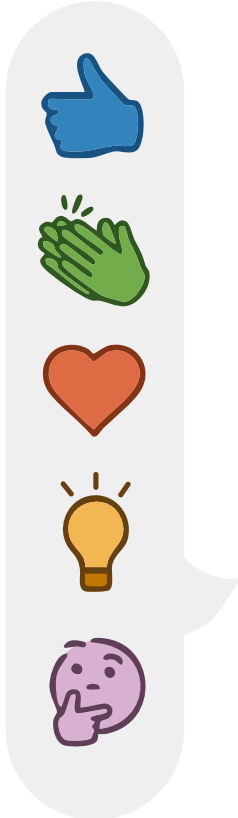
It focuses on real on-site support, field visits, and technical consultations, where LOHMANN specialists work alongside our partners to solve challenges, improve flock performance, and build stronger cooperation.

Our LinkedIn channel now connects seamlessly with the LOHMANN website, allowing followers to access our articles, explore additional resources, and enjoy a new series of videos featuring global events, expert interviews, and success stories from the field.

With strong visuals, interactive posts, and meaningful content, we continue to bring the LOHMANN spirit to life online, highlighting the people, partnerships, and performance that drive LOHMANN story worldwide.

LOHMANN BREEDERS — It's the egg

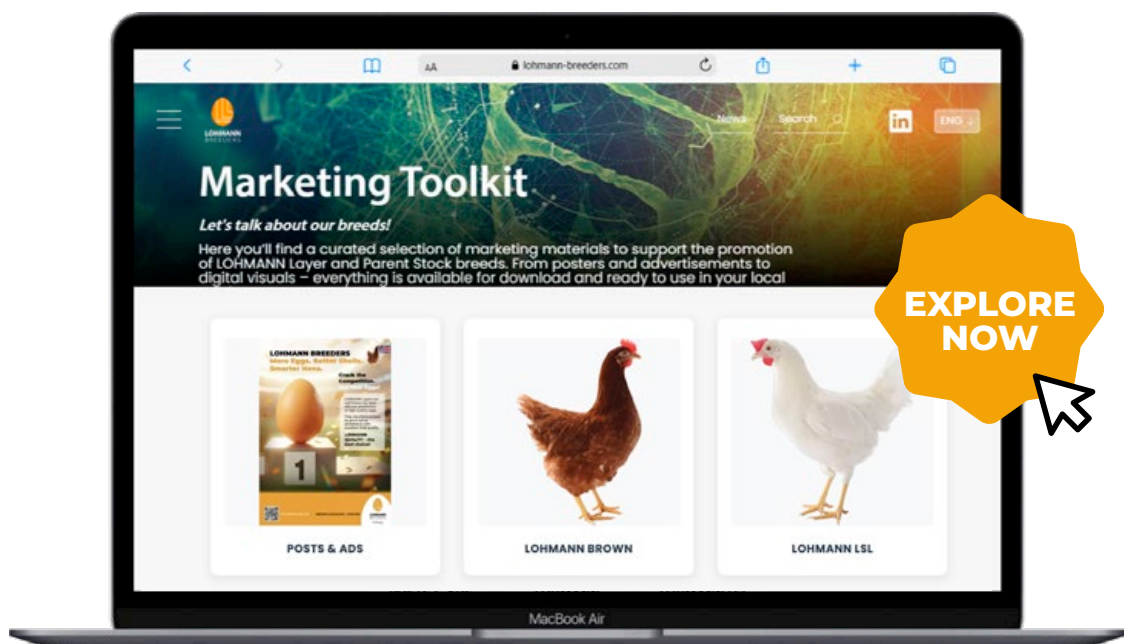




LET'S TALK ABOUT OUR BREEDS YOUR NEW LOHMANN MARKETING TOOLKIT IS HERE!

Nicole Rehse
PR/Communication

After the successful launch of our new website, we are excited to present another highlight: the new Marketing Toolkit – a dedicated online space designed to make communication and brand promotion easier than ever.

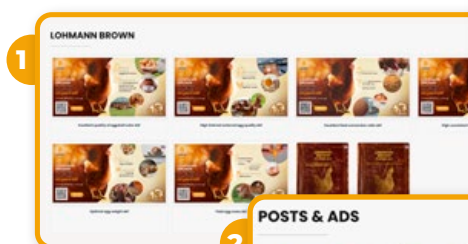


Your One-Stop Hub for LOHMANN Marketing Materials

Located in the Layer section of our website, the new Marketing Toolkit brings together all the creative resources you need to represent LOHMANN in your market.

It is divided into three areas:

LOHMANN BROWN

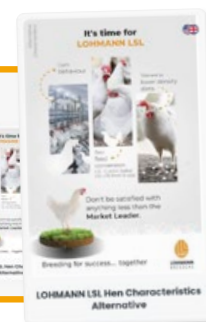


LOHMANN LSL

POSTS & ADS



Posts & Ads



Each section offers a wide range of ready-to-use marketing materials – including posters, print ads, and digital visuals – all in the familiar LOHMANN look and feel.

Everything is available for download, updated regularly, and offered in four languages, making it a truly global resource for our partners around the world.

Everything We Create – for You

The Marketing Toolkit is more than a collection of materials; it's a living platform built to support your local activities and make your work easier, faster, and more effective.

Whether you are planning campaigns, customer presentations, or events – you'll find all the essentials in one place.

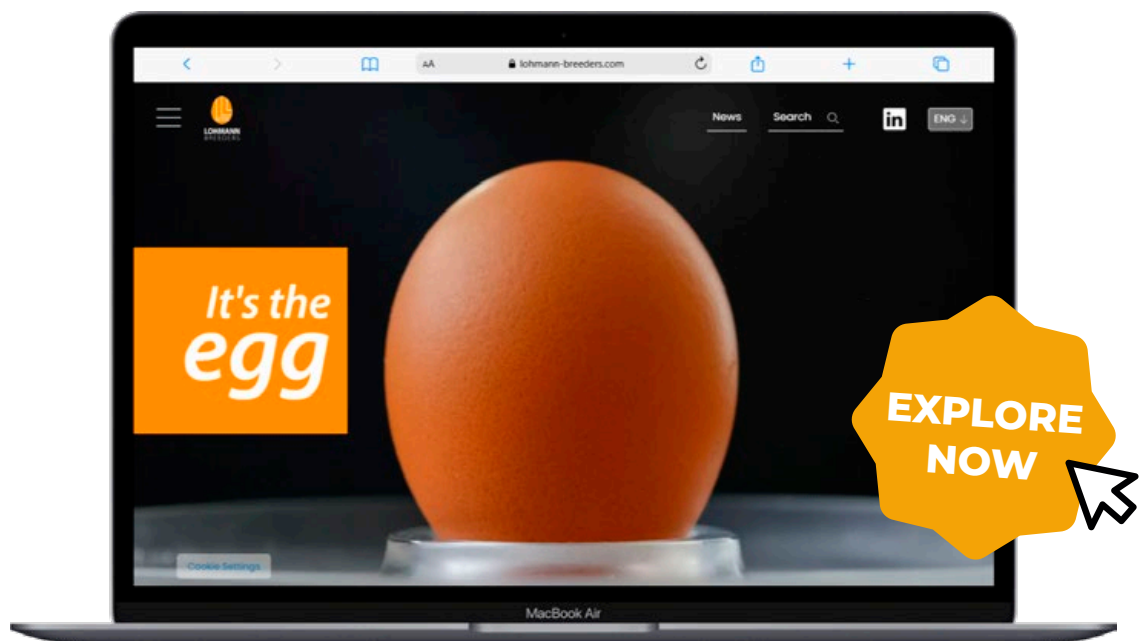
Explore the new Marketing Toolkit and discover how LOHMANN's communication tools can help you tell our shared story – of innovation, performance, and partnership.

LOHMANN BREEDERS — It's the egg

DISCOVER OUR NEW WEBSITE!

INNOVATION MEETS USABILITY – THE NEW LOHMANN ONLINE EXPERIENCE

Nicole Rehse
PR/Communication



At LOHMANN BREEDERS, innovation is more than a promise – it's part of our DNA.

That's why we are proud to present our **newly designed LOHMANN website**: a platform that combines fresh design, clear structure, and practical functionality – all tailored to make information easier and faster to access than ever before.

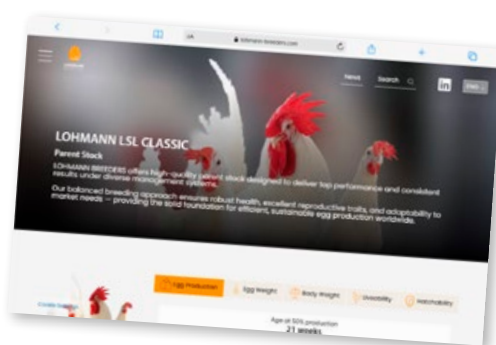
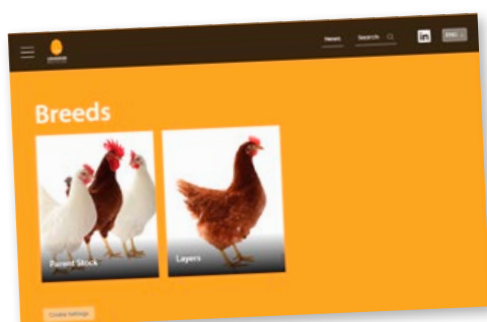
Fresh Design, Same Quality Content

Our new website reflects what defines LOHMANN: a perfect blend of innovation and reliability.

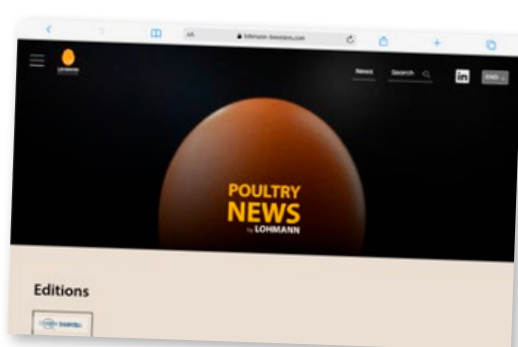
It features a modern layout, intuitive navigation, and a responsive design that adapts seamlessly to all devices – whether you're browsing from your desktop, tablet, or smartphone.

Visitors can now explore:

- **All LOHMANN breeds**, clearly presented with detailed performance data and key characteristics



- **Publications, technical materials, and event updates**, all in one place.



- And of course, the familiar LOHMANN essentials:

TOOLBOX, InfoLounge, and Video Box – your go-to hubs for knowledge and communication.



Everything is just a click away – designed to be **innovative, informative, and user-friendly**.

More Than a Website – A Gateway to Knowledge

The new LOHMANN website serves as more than an information platform; **it is a digital foundation for connection and collaboration.**

It allows partners, customers, and poultry professionals around the world to access LOHMANN's expertise, performance insights, and educational resources quickly and easily.

Whether you're looking for genetic updates, management advice, or training opportunities – the new site is built to support your success.

Explore Now!

Visit our new website and discover everything it has to offer – from in-depth breed information to digital tools and media content.

We are confident that you will find it both engaging and useful, reflecting the same quality and passion that define LOHMANN BREEDERS.

LOHMANN BREEDERS — It's the egg





Take your notes



LOHMANN
BREEDERS

A NEW CAMPAIGN FOR A NEW ERA

CELEBRATING DIVERSITY, EFFICIENCY & EGG QUALITY

Nicole Rehse
PR/Communication



LOHMANN BREEDERS has launched a powerful new global campaign — one that brings our core strengths into the spotlight: Diversity. Efficiency. Egg Quality.

These three pillars shape who we are, how we work, and how we continue to support producers around the world.

Our latest advertisements on LinkedIn showcase these messages with clarity, confidence, and the unmistakable LOHMANN spirit.

Diversity that defines markets

15 specialized varieties. 1 commitment: efficiency

At LOHMANN BREEDERS, we offer the **widest portfolio of layer varieties worldwide** — because every market is different, and so are its needs.

From LOHMANN LSL to LOHMANN BROWN, LITE, CLASSIC, EXTRA, TRADITION, and SANDY, each variety is bred with purpose and precision to deliver optimal results in both cage and cage-free systems.

Whether producers focus on shell color, egg size, management style, or housing system, LOHMANN provides exactly the right bird for every customer.



LOHMANN BREEDERS
More Eggs. Better Shells.
Smarter Hens.

15 Specialized Varieties.
1 Commitment: Efficiency.

LOHMANN BREEDERS is the company with the highest diversity in the layers portfolio.

White and brown, LITE, CLASSIC, EXTRA, TRADITION, SANDY, selected for cage and cage-free:

For every market the right egg for every management the right hen – It's your choice!

BREEDERS Better Shells. ns.

Crack the Competition. Not Your Eggs!

LOHMANN Layers are well-known for their efficient production of high-quality eggs. They are characterized by good laying persistence with excellent shell quality.

LOHMANN QUALITY – the best choice!

INTERNAL | A new campaign for a new era — Celebrating diversity, efficiency & egg quality

www.lohmann-breeders.com BREEDING FOR SUCCESS... TOGETHER

LOHMANN BREEDERS It's the egg

For every market the right egg, for every management the right hen.

Less feed. More eggs. Unmatched performance

This genetic strength translates directly into:

- Lower feed costs**
- More sustainable production**
- Reliable, persistent performance**

Thanks to decades of genetic expertise, LOHMANN hens use nutrients more intelligently, delivering exceptional results with consistent precision.

LOHMANN BREEDERS
More Eggs. Better Shells.
Smarter Hens.

www.lohmann-breeters.com

BREEDING FOR SUCCESS... TOGETHER

LOHMANN BREEDERS
More Eggs. Better Shells.
Smarter Hens.

www.lohmann-breeters.com

BREEDING FOR SUCCESS... TOGETHER

BREEDERS
Better Shells.
ns.

www.lohmann-breeters.com

BREEDING FOR SUCCESS... TOGETHER

**Less Feed,
More Eggs.
Unmatched
Performance.**

LOHMANN Layers are the most efficient birds in terms of feed conversion.

Do you pay special attention on this trait?

LOHMANN is the right choice!

**Crack the Competition.
Not Your Eggs!**

LOHMANN Layers are well-known for their efficient production of high-quality eggs.

They are characterized by good laying persistence with excellent shell quality.

LOHMANN QUALITY – the best choice!

LOHMANN BREEDERS
It's the egg

www.lohmann-breeters.com

BREEDING FOR SUCCESS... TOGETHER

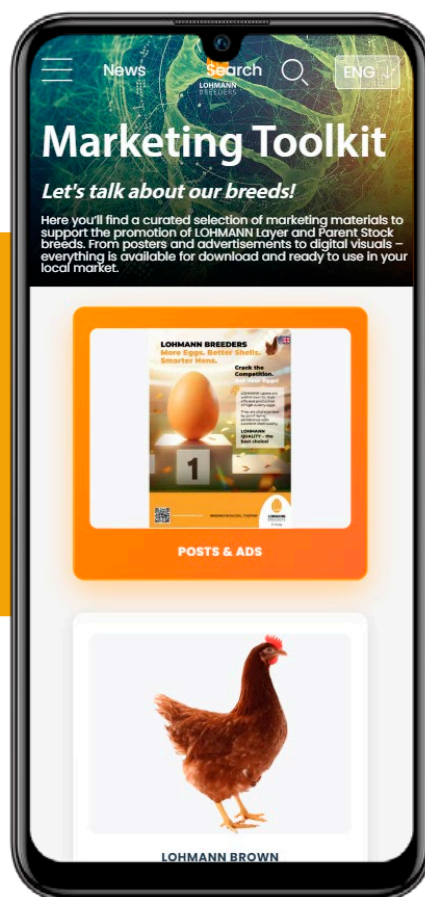
Smarter hens. More eggs. Better profitability.

Available now in the Marketing Toolkit

All campaign visuals and advertisements are now available in the new LOHMANN Marketing Toolkit on our website.

Simply download, use, and share the materials you need — in four languages and ready for your local markets.

Explore the Toolkit here:



LOHMANN BREEDERS – It's the egg

This campaign underlines what LOHMANN stands for:

genetic excellence, global partnership, and performance you can trust.

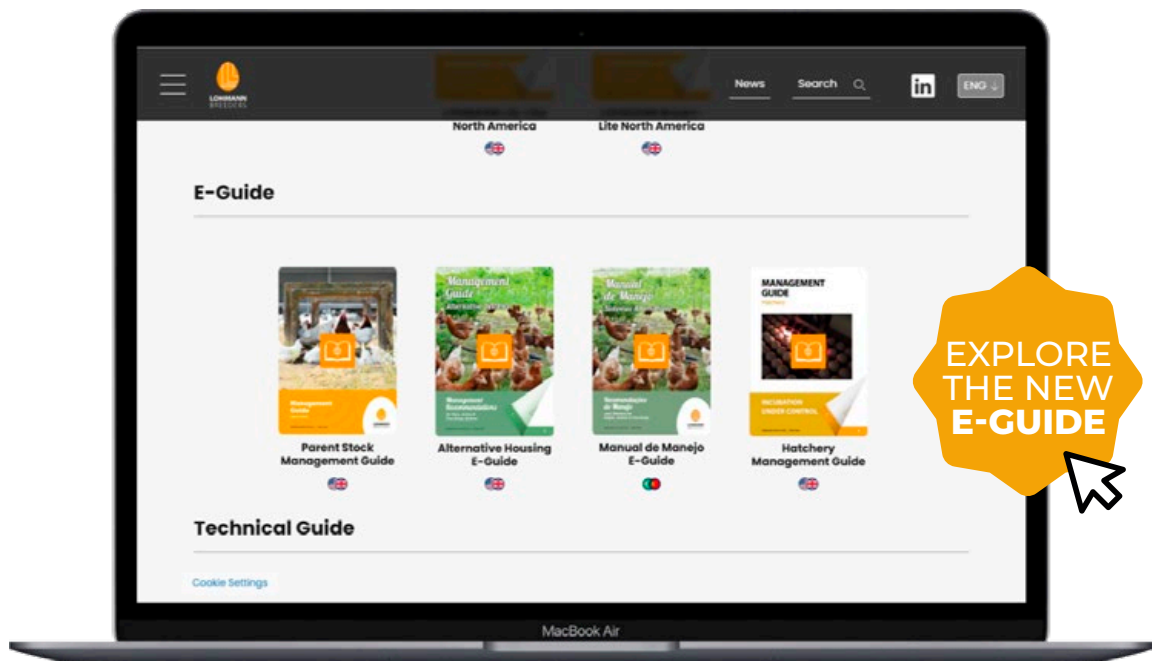
Breeding for success... together!



NEW INTERACTIVE LOHMANN

PARENT STOCK MANAGEMENT GUIDE LAUNCHED

Xinye Yang
Marketing








Some milestones deserve a special spotlight, and this one certainly does.

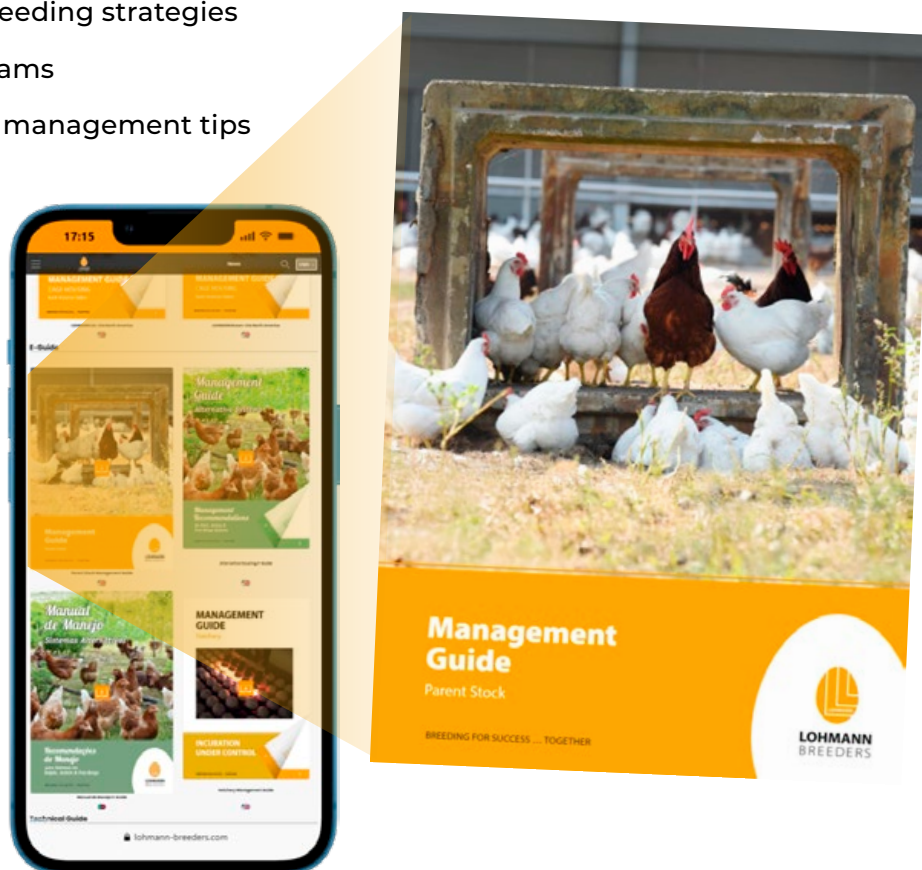
During the 60th LOHMANN Franchise Distributor Meeting (FDM) in Singapore, LOHMANN BREEDERS officially launched the new interactive edition of the Parent Stock Management Guide, marking an important step in the company's continuous effort to combine tradition with innovation.

The updated guide reflects LOHMANN's long-standing commitment to continuous improvement and knowledge transfer, providing partners worldwide with up-to-date, practical, and scientifically based management recommendations.

This comprehensive e-guide combines decades of expertise with digital convenience — featuring videos, hyperlinks, and intuitive navigation that make flock management easier and more efficient than ever.

The revised version includes the latest insights and field-proven recommendations in:

-  Health and biosecurity
-  Housing system adaptations
-  Nutrition and feeding strategies
-  Lighting programs
-  Breed-specific management tips



Whether working with LOHMANN breeds in traditional or alternative housing systems, the new **Parent Stock Management Guide** equips producers with the knowledge to optimise layer performance, welfare, and efficiency, setting new standards for digital learning in poultry management.

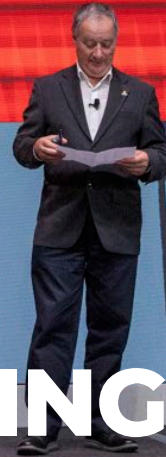
LOHMANN BREEDERS – It's the egg



BEST FLOCK AWARD



LOHMANN
BREEDERS



CELEBRATING EXCELLENCE:

OUR BEST FLOCK AWARD WINNERS

Nicole Rehse
PR/Communication



Behind every strong data set stands a strong flock—and committed partners who share their results with us. The many customers who submitted their flock data this year not only contributed to deeper benchmarking insights, but also demonstrated impressive performance at the highest level.

During this year's LOHMANN Franchise Distributor Meeting, several of these customers were honoured with the Best Flock Award—a recognition that celebrates outstanding field results, consistent management, and the close collaboration between farms and our technical teams.

What made this award truly special was what happened afterward:

Numerous proud posts and celebrations on LinkedIn showed how meaningful this recognition is for our partners around the world. Their enthusiasm highlights an important message — **data is not just numbers; it's achievement, commitment, and pride.**



By sharing their flock data, these customers helped drive genetic progress, contributed to global benchmarking, and set new standards of excellence.

We extend our heartfelt congratulations and sincere thanks to all participants.

Your success drives our innovation.

Breeding for success...together!



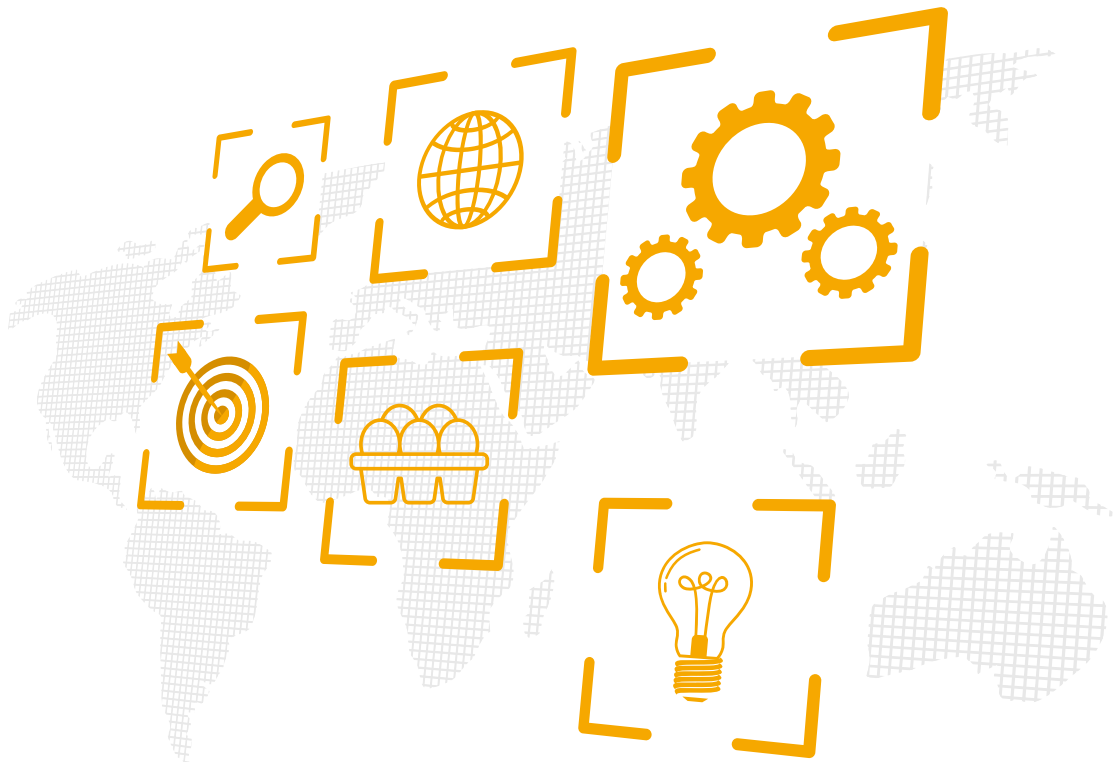




BENCHMARKING AND DATA ANALYSIS: DRIVING EXCELLENCE IN POULTRY PRODUCTION

Thomas Calil

Product Manager LOHMANN BREEDERS



Modern poultry production demands precision. Gone are the days when intuition alone could guide management decisions. Today, **benchmarking** and **data-driven analysis** are essential tools for optimizing performance and ensuring profitability.

At LOHMANN BREEDERS, we combine comprehensive data collection with advanced analytics to deliver actionable insights for producers worldwide.

Why Benchmarking and data analysis matter

The performance of laying hens depends on a complex interplay of genetics, nutrition, housing system, environmental and health factors as well as management practices. Without structured data, these relationships remain unclear, and decision making may turn out biased. Benchmarking allows producers to:

- Compare their results against industry standards
- Identify strengths and weaknesses
- Implement targeted improvements

Field data analysis goes a step further by enabling:

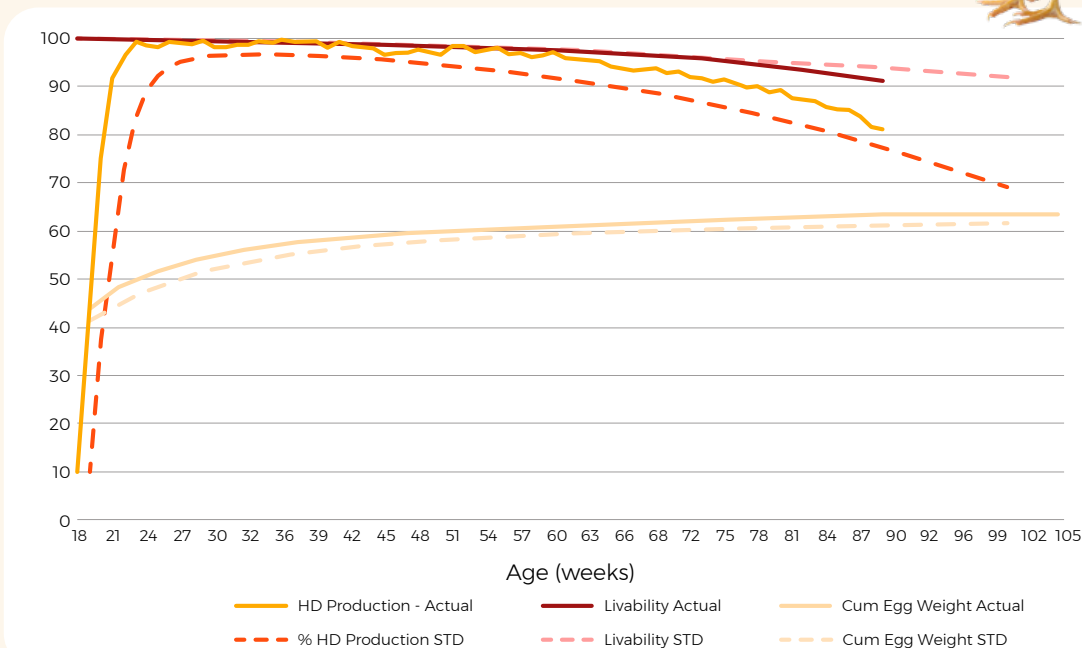
- Early problem detection (e.g., feed intake, mortality)
- Optimization of management strategies
- Evidence-based decisions for long-term success

Key insights from benchmarking

Recent benchmarking studies highlight the genetic potential of LOHMANN breeds under diverse conditions across the globe.

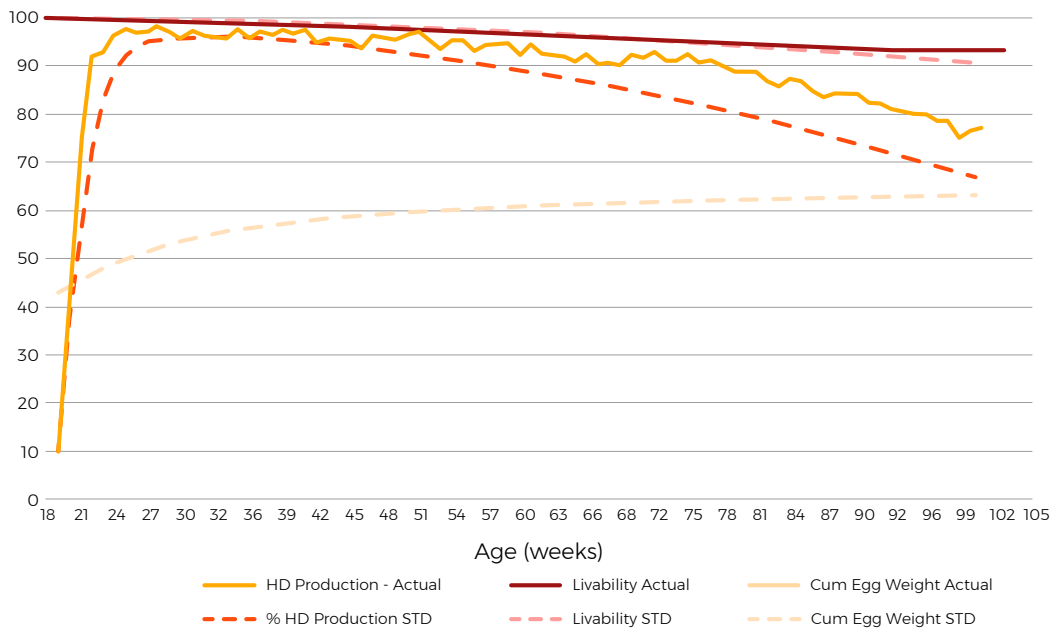


Reaching over 500 eggs before 100 weeks is no longer a milestone with livability as good as 94% and over 50 weeks above 90% hen day production for LSL commercials.





On the other hand, even LOHMANN BROWN birds are able to reach over 500 eggs per hen housed in cage conditions, even in hot climate regions where we balance good management practices and hands-on technical service.



Extending production to 100 or more weeks showcases genetic robustness and the potential for longer laying cycles.

We often see customers keeping single cycles of 120 weeks getting close to 600 eggs per hen house in 2025.

When properly managed even more eggs per hen housed are yet to come!



Performance drivers

Data from flocks hatched in 2020–2022 reveals that the following factors significantly influence outcomes at different rates:

Housing system: open houses and climate controlled

Feed supplier: different suppliers lead to significant different outcomes

Stocking density: normal ranges of birds per area should be respected for enhanced pay off

Beak treatment: different approaches can have better results

Hatch season: linked to housing, it can be an effect playing important role in egg production

Understanding these variables help producers fine-tune management strategies and maximize profitability.

The interaction of these variables gives egg production a finetuning tool to optimize the operation.

The Future: AI and Big Data

LOHMANN BREEDERS is pioneering the use of advanced analytics in poultry production:

Artificial Intelligence and Machine Learning

Big Data and multivariate analysis

Ethical data handling (fully anonymized)

Our predictive models already achieve significant statistical confidence.

These tools enable automation, re-skilling, and precise recommendations for optimal performance.



LOHMANN
BREEDERS

Conclusion

Benchmarking is more than comparison—it is a strategic instrument for continuous improvement. Combined with robust data analysis, it empowers producers to:

Measure – Analyze – Act

Reduce waste and improve efficiency

Adapt genetics to local conditions

Call to Action

Share your field data with us and help shape the future of layer production.

Data = Insight = Results.



LOHMANN BREEDERS

More Eggs. Better Shells. Smarter Hens.

**15 Specialized
Varieties.**

**1 Commitment:
Efficiency.**



LOHMANN BREEDERS
is the company with
the highest diversity in
the layers portfolio.

White and brown,
LITE, CLASSIC, EXTRA,
TRADITION, SANDY, selected
for cage and cage-free:

**For every market
the right egg for
every management
the right hen –
It's your choice!**



www.lohmann-breeders.com

BREEDING FOR SUCCESS... TOGETHER



**LOHMANN
BREEDERS**

It's the egg

COCCIDIOSIS VACCINATION

FIVE KEY POINTS FOR EFFECTIVE POST-VACCINATION MANAGEMENT IN CAGE-FREE SYSTEMS

Nick Van Benten
**Commercial Technical
Project Manager**

With the rise of more cage-free systems such as aviaries, coccidiosis has re-emerged as a significant challenge. One of the main reasons for its increased prevalence in these systems is the direct contact birds have with their own manure¹. This contact allows the parasite to complete its lifecycle, enabling it to reproduce and spread.

Vaccination is among others one of the tools used to reduce clinical signs and damage caused by Eimeria species infections by stimulating the development of immunity. The only available vaccines are live (attenuated) formulations containing sporulated oocysts of different Eimeria species². Ongoing research is aimed at developing (recombinant) subunit vaccines³ and DNA-based vaccines^{4,5}.



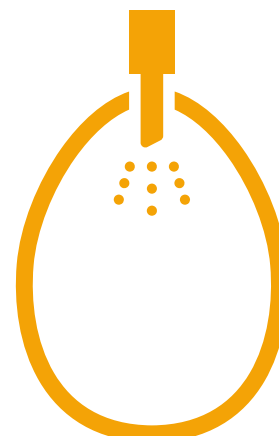
The administration methods vary and may include:

***In-ovo* vaccination in the hatchery**

Coarse spray in the hatchery or in the rearing farm

Gel application in the hatchery or in the rearing farm

Via drinking water or spraying over feed in the rearing farm



Hatchery administration is generally preferred, as the vaccine is evenly distributed, the application is early in life, it stimulates natural preening behaviour for the intake of the vaccine and the process requires minimal handling.

Both coarse spray and gel application methods are effective, provided the correct vaccine dose is applied⁶.

Unlike many other vaccines, managing the immunity development is not over after proper administration. Post-vaccination management is critical, as the attenuated oocysts in the vaccine need to be re-cycled, similar to a natural infection, to trigger a strong and lasting immune response.

In practical terms, the sporulated oocyst must first infect the bird, replicate within the gut wall, and then be shed through the faeces, where they are picked up by other birds. Depending on the *Eimeria* species, 2 to 3 cycles (equivalent to 3 to 6 weeks) are typically needed for full immunity to develop⁷.

This article outlines five essential post-vaccination management points to consider, whether you receive already vaccinated chicks or apply the vaccine yourself in the poultry house.

Tools to estimate the onset of immunity: crop filling and OPG monitoring

Crop filling?! Yes, really. While traditionally used to check whether chicks have found feed and water during the first 24 hours after placement, crop filling also correlates with key early performance indicators such as the number of non-starters, early skeleton and organ development and appetite formation⁸.

Nevertheless, a good start of chicks needs to be ensured to develop protective immunity, it is also necessary to secure the start of the cycles needed post-vaccination.



Manufacturers of live attenuated coccidiosis vaccines emphasize that the sporulated oocysts in the vaccine are not immediately active upon administration.

Instead, they must be mechanically 'cracked' open in the gizzard, filled with feed, before they become biologically active by releasing smaller eggs (sporocysts) and in the end infective parasites (sporozoites)⁹⁻¹¹.



Post-hatch feed or other hatching supplements might already facilitate this process. Once 'cracked', it takes approximately 4 days for *E. acervulina* and up to 7 days for *E. necatrix* before first oocyst shedding occurs via the faeces.

If cracking does not occur within 6 to 8 hours post-vaccination, the start of the cycle, and therefore the development of immunity, can be delayed.

To ensure a strong and timely onset of immunity, crop filling assessment can be combined with OPG (oocysts per gram of faeces) monitoring.

OPG monitoring in a strict protocol of fresh faecal samples post-vaccination is a method to confirm vaccine replication within the flock, providing direct evidence that the first cycle of oocyst shedding has taken place^{12,13}.



Provided it is done correctly, OPG monitoring could offer valuable insight into the events following vaccination and the progress of immunity development. Together with crop filling assessment, these practical tools enable farmers to determine:

Whether cracking has taken place and the first cycle has been started

The expected timeframe for the onset of protective immunity

The extent to which the vaccine is recycling throughout the flock

Whether immunity is being effectively established



Manage your chick paper properly, to secure contact with faeces

In cage-free systems like aviaries, chicks typically have little to no contact with their own faeces during the first weeks of life because they are placed in pens in the system.

However, this contact is essential to initiate oocyst recycling, which is required for building effective immunity after coccidiosis vaccination.

To facilitate this as well as chick comfort, chick paper plays a critical role. The material should¹⁴:

Be made of sturdy, hydrophobic material
(e.g. cardboard > 250 g/m² or plastic)

Keep faeces moist to support oocyst sporulation and viability

Cover at least 60 – 80% of the pen floor at placement

Ideally placed under the drinker lines, where humidity is higher

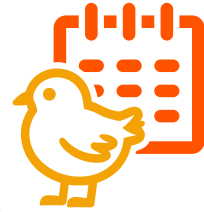
↳ **Only if nipples do not leak, as excess water can lead to wet chicks and health issues**



As chicks grow and are moved to other pens, though not yet fully accessing the entire system, move an equal amount of paper with them, aiming for at least 40% coverage of the new area.

It is recommended to not remove any chick paper before 28 days post-vaccination, and at minimum, while birds remain in pens. When the pens are opened and the birds have access to the floor, the remaining chick paper can be put on the floor to allow further uptake of oocysts.

Be sure to place the paper on the ground only once the birds have access to it, and not too far before, to prevent it from drying out.



▲ **Picture 1.** Example of a pen well-covered with chick paper, including starter feed

Additionally, if the birds are vaccinated by spraying in the hatchery, the paper used in the transport boxes should be placed in the pens as well (**Picture 2**).

This ensures that all the sprayed vaccine that has not reached a chick, could still be available, and any uncracked oocysts from the vaccine that passed through the digestive tract during transport can still be cracked after excretion and contribute to immunity development.



▲ **Picture 2.** Placement of transport papers to maximize vaccine efficacy and oocyst recycling

If, for any reason, the chick paper is already gone before the chicks have access to the whole system, move them to the floor as fast as possible. **Or place new paper and manually apply fresh faeces collected from the manure belt to support continued oocyst intake.**

Humidity, temperature and oxygen enable sporulation, but freshness of faeces makes it effective

Once the vaccine has become effective and the first oocysts are shed (typically after 4 to 7 days post-vaccination), they are not yet infective.

To become effective, oocysts must undergo sporulation, a process that depends on several environmental factors, most importantly temperature, humidity and oxygen.

Recommended conditions for optimal sporulation include:

Chick paper temperature between 24 – 28 °C

Humidity on the level of the chick paper of 30 – 40%

Corresponding with an ambient air humidity of around 60 – 65%

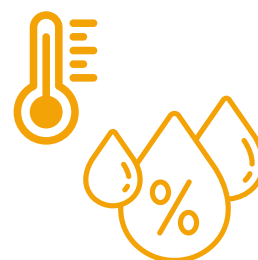
While these parameters are essential, a practical approach focuses on the freshness of the faeces. Ask yourself: Are the droppings on the paper still moist, or have they already dried out?

Look at your papers in different pens and assess whether you think the oocysts can survive.

In fresh faeces, oocyst can survive for up to 7 days, whether in dried faeces, they may die off within a few hours.

To improve paper-level humidity, lightly sprinkle water using a watering can or backpack sprayer, or slightly increase nipple pressure to allow minimal dripping. **Be cautious, since excessive moisture can lead to wet chicks, health issues and rupturing of the chick paper.**

A safer, more general approach is to raise overall air humidity by rinsing water on floors and walls, which indirectly benefits paper-level humidity.



Facilitate re-uptake through targeted chick behaviour

Once oocysts have been shed and successfully sporulated, the next critical step is their re-ingestion by the chicks to continue the immunity-building cycle.

This re-uptake can be stimulated by encouraging natural pecking behaviour toward chick paper and fresh faeces.

There are several practical strategies to support this:

Distribute feed directly on the chick paper for the first 10 – 12 days, as can be seen in *Picture 1*. This not only ensures that chicks can easily find feed but also increases the chance of accidental ingestion of faeces containing sporulated oocysts.

Increase light intensity to make moist, shiny faeces more attractive for pecking and to stimulate preening behaviour, both of which promote oocyst intake.

Maintain a higher stocking density during the first 14 days of 30 – 60 birds per m². After 15 days, this can be reduced to 15 – 30 birds per m². A higher density encourages more movement and interaction with the paper, increasing exposure to oocysts. Do not forget to relocate a proportional amount of chick paper when reducing the stocking density, ensuring at least 40% coverage in the new pen.



Safeguard gut health and avoid antibiotic interference

Maintaining gut integrity and gut health is essential for effective immunity development following coccidiosis vaccination. The replication of vaccine oocysts takes place in the intestinal epithelial cells (enterocytes), meaning that both gut health and integrity are critical for initiating the immune response.

Various stressors can impair gut health, and as a result, hinder vaccine performance. These include:

(Immunosuppressive) diseases

Mycotoxins

Cold or heat stress

Poor hygiene and biosecurity

Low-quality feed (e.g. >25% fines or nutritional imbalances)

Inadequate feeder or drinker space



Any of these factors can damage gut cells, limit oocyst replication, and ultimately prevent the bird from building proper immunity. Moreover, stressed birds often reduce their feed and water intake, which directly lowers oocyst ingestion.

Medical treatments, like some antibiotics (sulphonamides, tetracyclines and spiramycin¹⁵) and anticoccidial drugs¹⁴, pose a direct risk to vaccine efficacy due to their coccidiostatic or coccidiocidal activity or immunosuppressive side effects¹⁶⁻¹⁸.

These drugs, as well as some water disinfectants (e.g. chlorine), may alter the cycle of the vaccine or kill the oocysts of the vaccine, effectively blocking the immunization process.

- ✓ **In conclusion, successful coccidiosis vaccination in cage-free systems depends not only on correct administration but also on careful post-vaccination management.**
- ✓ **Key points include ensuring early vaccine uptake and activation, supporting oocyst intake through proper chick-paper use, optimizing environmental control for sporulation, stimulating chick behaviour that facilitates re-ingestion of oocysts, safeguarding gut health and avoiding vaccine-interfering treatments.**
- ✓ **Together, these five key points provide poultry farmers with the foundation to build strong, long-lasting immunity and protect their flocks against future coccidiosis challenges!**

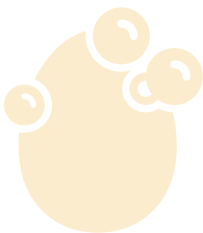
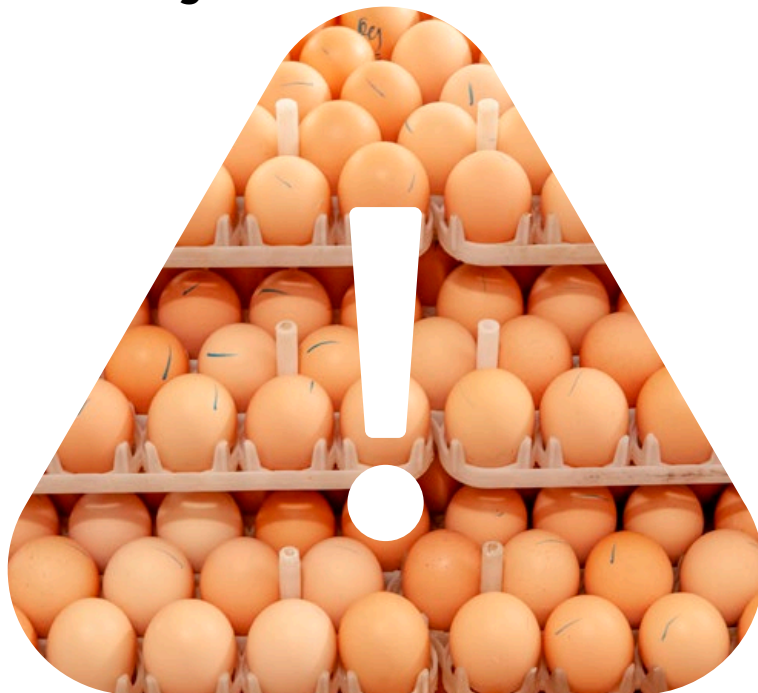
References

1. Dardi M. Coccidiosis and welfare-friendly production systems for laying hens: A new connection. The Poultry Site. May 14, 2018. Accessed July 24, 2025. <https://www.thepoultrysite.com/articles/coccidiosis-and-welfarefriendly-production-systems-for-laying-hens-a-new-connection>
2. Soutter F, Werling D, Tomley FM, Blake DP. Poultry Coccidiosis: Design and Interpretation of Vaccine Studies. *Front Vet Sci.* 2020;7:101. doi:10.3389/fvets.2020.00101
3. Gumina E, Hall JW, Vecchi B, et al. Evaluation of a subunit vaccine candidate (Biotech Vac Cox) against *Eimeria* spp. in broiler chickens. *Poult Sci.* 2021;100(9):101329. doi:10.1016/j.psj.2021.101329
4. Chen C, Su J, Lu M, et al. Protective efficacy of multiepitope vaccines constructed from common antigens of *Eimeria* species in chickens. *Vet Res.* 2023;54(1):119. doi:10.1186/s13567-023-01253-y
5. Zhang Q, Yuan Y, Pu X, et al. Vaccination with formulations targeting *Eimeria maxima* and *Clostridium perfringens* conferred comprehensive protection using a dual-infection challenge model of necrotic enteritis. *Poult Sci.* 2024;104(2):104687. doi:10.1016/j.psj.2024.104687
6. Albanese GA, Tensa LR, Aston EJ, Hilt DA, Jordan BJ. Evaluation of a coccidia vaccine using spray and gel applications. *Poult Sci.* 2018;97(5):1544-1553. doi:10.3382/ps/pey011
7. Modern Poultry. Don't overlook the basics when using coccidiosis vaccines. May 14, 2024. Accessed July 24, 2025. <https://modernpoultry.media/dont-overlook-the-basics-when-using-coccidiosis-vaccines/>
8. Linhoss J, Purswell J, Magee C, Chesser D. Research Note: Effect of stocking density on crop fill progression in broilers grown to 14 d. *Poult Sci.* 2020;100(3):100929. doi:10.1016/j.psj.2020.11.080
9. Cervantes HM. Managing Coccidiosis in Broiler Breeders. Accessed July 25, 2025. <https://www.thepoultrysite.com/articles/managing-coccidiosis-in-broiler-breeders>
10. Williams RB. Anticoccidial vaccines for broiler chickens: Pathways to success. *Avian Pathol.* 2002;31(4):317-353. doi:10.1080/03079450220148988
11. Del Cacho Malo E. Coccidiosis: La enfermedad, consecuencias y tratamiento. In: WPSA-AECA; 2013.
12. HIPRA Poultry Business. Coccidiosis in Poultry: Counting *Eimeria* spp. Oocysts can help! *Eimeria.* April 24, 2020. Accessed August 11, 2025. <https://eimeriaprevention.com/eimeria-spp-oocysts-count-coccidiosis/>
13. HIPRA Poultry Business. Sampling procedure for diagnosis: Coccidiosis vaccine. *Eimeria.* September 30, 2021. Accessed August 11, 2025. <https://eimeriaprevention.com/sampling-procedure-diagnosis-coccidiosis-vaccine/>
14. HIPRA Poultry Business. Coccidiosis vaccine: Post-vaccination management. *Eimeria.* July 23, 2020. Accessed July 24, 2025. <https://eimeriaprevention.com/management-post-coccidiosis-vaccine/>
15. Ball SJ, Warren EW. Effects of chlortetracycline, oxytetracycline and spiramycin on *Eimeria tenella* in chicks. *J Comp Pathol.* 1966;76(3):255-259. doi:10.1016/0021-9975(66)90004-1
16. Khalifeh MS, Amawi MM, Abu-Basha EA, Yonis IB. Assessment of humoral and cellular-mediated immune response in chickens treated with tilmicosin, florfenicol, or enrofloxacin at the time of Newcastle disease vaccination. *Poult Sci.* 2009;88(10):2118-2124. doi:10.3382/ps.2009-00215
17. Grabowski Ł, Węgrzyn G, Węgrzyn A, Podlacha M. Highly different effects of phage therapy and antibiotic therapy on immunological responses of chickens infected with *Salmonella enterica* serovar Typhimurium. *Front Immunol.* 2022;13. doi:10.3389/fimmu.2022.956833
18. Madubuike KG, Okoroafor ON, Asuzu IU. Effects of Early-Life Antibiotics Administration on the Immune Response to Newcastle Disease Lasota Vaccination and Weight Indices of Broiler Chicken. *Folia Vet.* 2020;64(2):74-79. doi:10.2478/fv-2020-0020

HATCHERY CONTAMINATION

PRINCIPLES AND PRACTICAL TIPS

Thomas Calil
Product Manager



Hatchery contamination can be one of the most serious challenges for the entire production management, since the hatchery is the main hub of the poultry industry, connecting breeder farms to commercial farms.

Preventing contamination within a hatchery depends on knowing 4 core principles:

Physical Protection

Knowing Your Enemy

Power, Temperature, Product, Lapse

Gas Diffusion

Physical Protection

The best way to prevent airborne contamination in a hatchery begins with careful planning during the construction phase, including the building to take advantage of prevailing winds and always following the egg-to-chick flow in accordance with external airflow.

Once the hatchery is built, protective measures can still be implemented, such as physical barriers, either natural (trees) or man-made (walls).

Regardless of the hatchery's orientation, it is essential to maintain at least four separate flows and to avoid cross-contamination at all costs — not only for personnel, but also for equipment and especially ventilation.



Egg flow, setter flow, hatcher flow, and chick flow. Ventilation plays a key role here. The general rule is that fresh air intake must be on the clean side, while exhaust air must be taken from the dirty side — never the reverse.



Ventilation also helps to keep trays and baskets dry after cleaning and disinfection, as this will ensure no re-contamination occurs. To dry the room and equipment efficiently, set the ventilation system to the lowest temperature it can maintain.

This will reduce water vapor in the air by condensation and will make absolute humidity down by condensation out.



Immediately after washing, and before disinfection, place an air heater blower aimed directly at the trays - never after disinfection, as this could blow disinfectant off the trays and baskets.

This will evaporate the water, remove it from the tray and basket surfaces, and allow the HVAC system to remove it from the air.



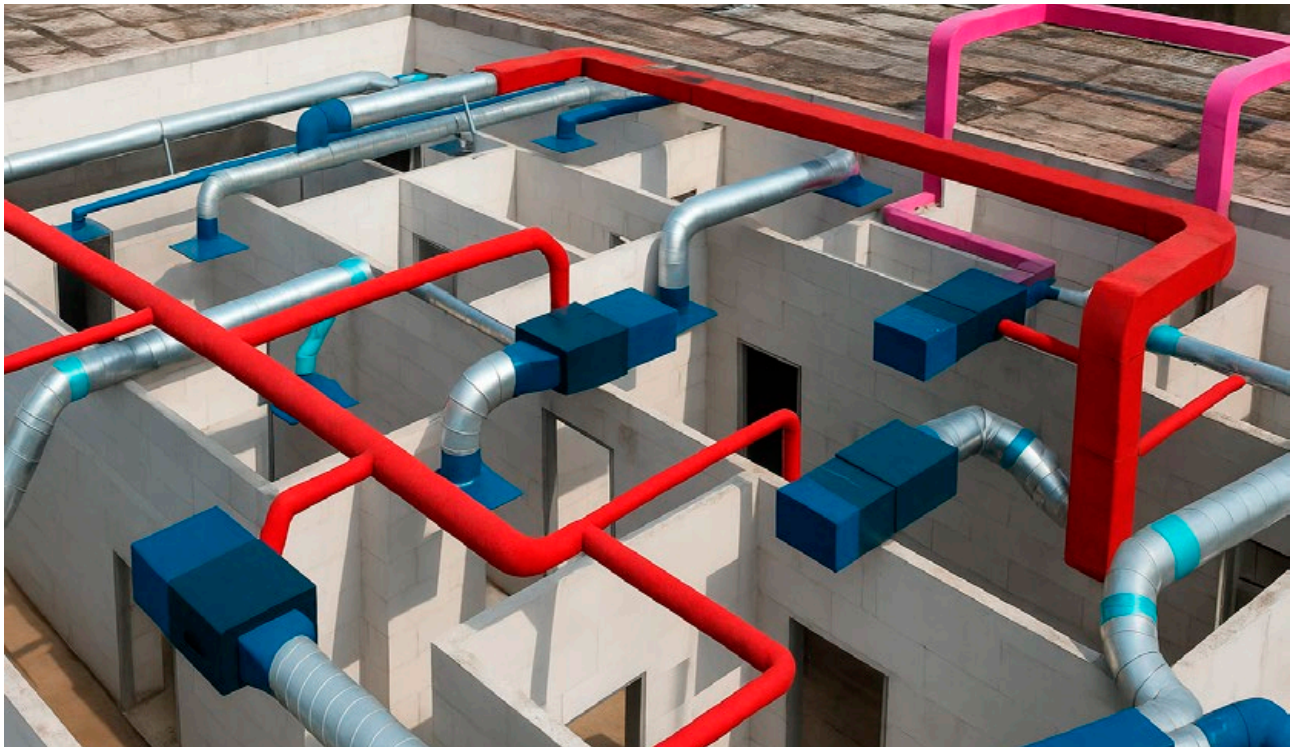
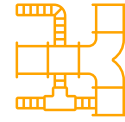
Last but not least, in hot and humid summer conditions, avoid fresh air intake, since it can carry far more water vapor than the desired indoor climate (e.g., 25°C / 50% RH).

Even outside air at 40°C and 25% RH can bring in more water than desired indoors.



Another common source of contamination is ductwork for both fresh and exhaust air.

We recommend minimizing the number of ducts over machines and within the building, as these areas can become dirty and damp over time, creating ideal conditions for microbial growth, particularly mold.



Source: internet desk search

Instead of ducts, consider plenums large enough for a person to stand and walk through. Airspeed can easily be adjusted in such plenums for proper distribution across the different rooms in the hatchery.



Knowing your enemy

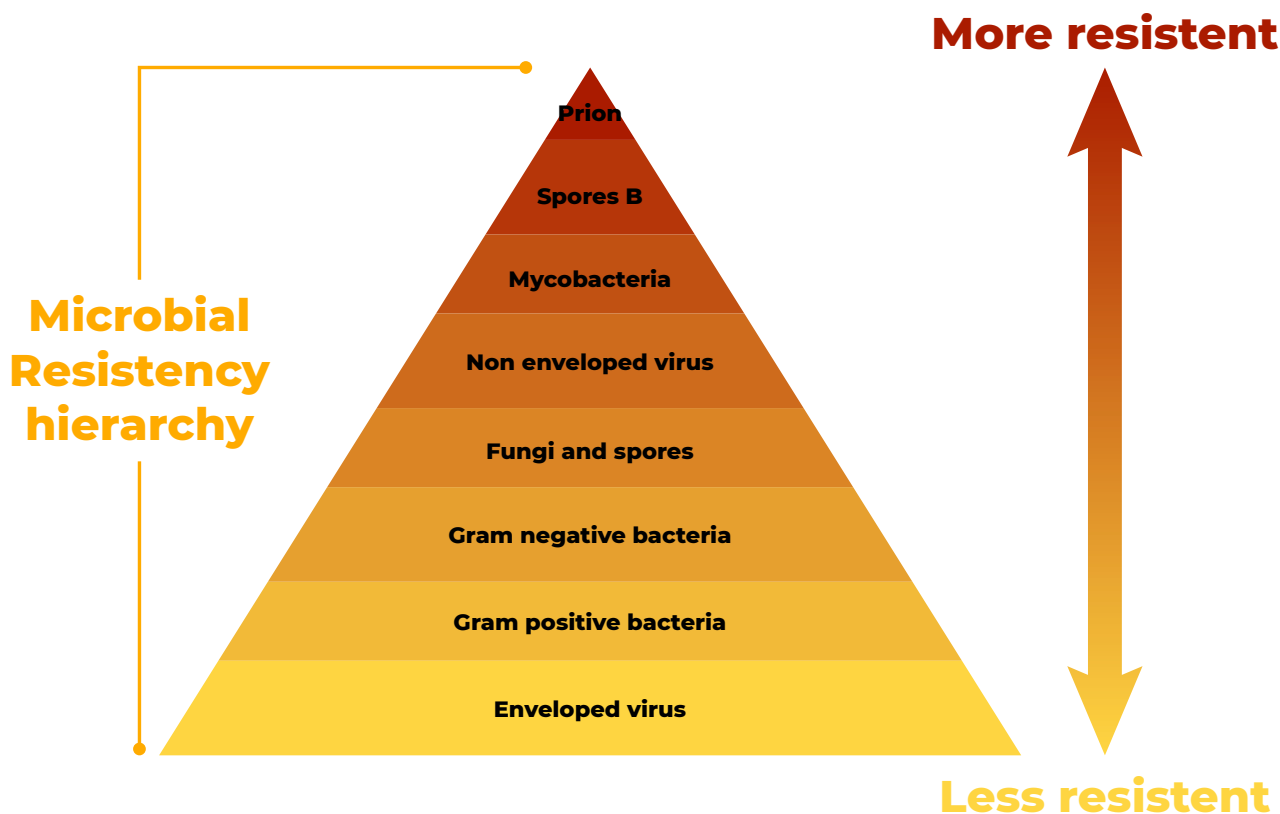
Keeping the hygiene status of a hatchery is like an ongoing battle. One of the most important things is to get to know your enemies i. e. to understand exactly which microorganisms you are fighting.

In a hatchery, **fungi** (e.g., *Aspergillus sp.* and *Cladosporium sp.*) and **spores** are more resistant than gram-negative bacteria (*E. coli*, *Pseudomonas*, *Proteus sp.*) and gram-positive bacteria (*Staphylococcus sp.*).

Identifying the specific microorganisms affecting your hatchery's health is essential before deciding on control strategies.

Today there are several widely adopted disinfectant molecules such as quat ammonium, glutaraldehyde, and peracetic acid, all with good action against different types of bacteria and fungi.

Some newer molecules have recently entered the market, such as Chloramine T, Anolytech, and ortho-phthalaldehyde. Whether these products are available in your country or not, the most important factor is to check their actual efficiency against the microorganism strains you are dealing with.



We therefore strongly recommend performing a Minimum Inhibitory Concentration (MIC) test for every new batch of disinfectants received in your hatchery.

Please add this after Lapse (PTPL)

Power refers to the application of physical force — by machine or people — during cleaning. This might involve scrubbing a hatcher wall, applying high-pressure water to a setter tray, or cleaning any other surface that requires routine attention. Applying enough power at the start of the cleaning process makes the following PTPL steps easier — and the reverse is also true.

Today, numerous highly efficient machines can replace much of the labor-intensive work involved in this process, and we should consistently rely on these machines for the most demanding hatchery tasks. In any cleaning procedure, power should always be the first consideration.



Power

Temperature is well known to improve cleaning, as hot water can enhance chemical solubility, remove scale from surfaces and crevices, and help with grease removal — particularly valuable in hatchers, where yolk residues are among the most difficult contaminants to remove.

However, a frequently overlooked factor is the growth temperature range of microorganisms. Mesophiles — a group of bacteria and fungi — grow best between ~15°C and 45°C, with peak growth at 37–38°C. This is exactly the range in which incubation occurs! These microorganisms have evolved alongside poultry for millions of years, adapting to the same optimal conditions.



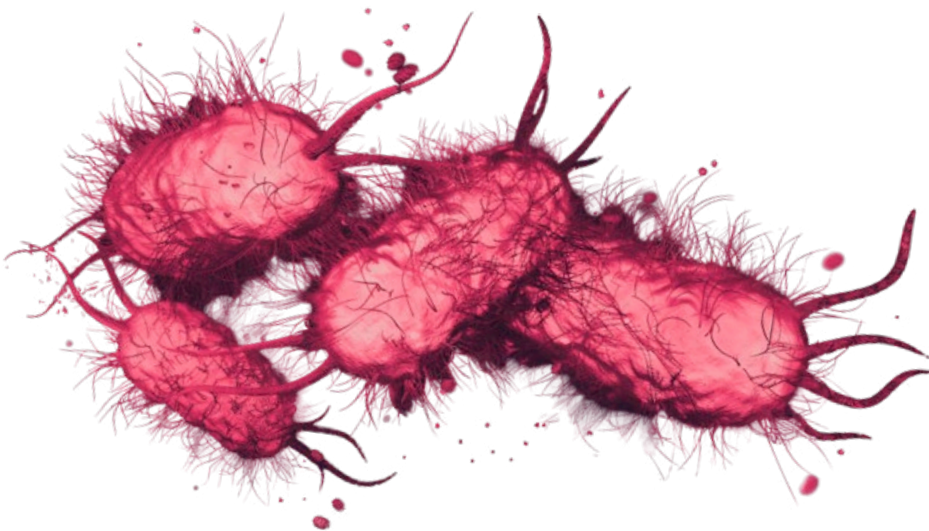
This means that using washing machines with water below 50°C can actually increase the risk of cross- or re-contamination. Instead of killing microorganisms, we may be helping them grow. If your hatchery water temperature cannot be maintained above 50°C, either avoid hot water or ensure all organic matter is completely removed first, followed by an independent rinse or disinfection stage.

Temperature

Product

Product choice depends on the cleaning objective. Alkaline detergents generally work better on organic matter, while acidic detergents are more effective against mineral deposits (e. g. from hard water). Nano-technology detergents — not yet available everywhere — can remove protein and fat exceptionally well.

Foam is often preferred for cleaning because it makes application visible, but bubble size matters: small bubbles cling to surfaces, while large bubbles push detergent away.



Lapse refers to the contact time between detergent or disinfectant application and its effect. The more mistakes made in earlier steps, the longer the lapse required for effective action.

Killing microorganisms is a multi-step process — disrupting membranes, breaking proteins, damaging nucleic acids, and altering metabolic pathways, among others.

This takes time, especially *in vivo*, so allow at least 20 minutes for detergents and disinfectants to work.



es lapse



Gas diffusion

When disinfecting (not only eggs), it is important to understand the basic principles of gas diffusion.

For optimal diffusion, we need the correct dosage (concentration), air temperature, and ventilation (distribution). Fast, even distribution of the active ingredient is crucial, especially with aldehydes like formaldehyde, which can cause embryo mortality if poorly managed.

When eggs are packed too closely, airflow between them is restricted. Using setter trolleys and trays allows easier air passage, but factors such as airflow speed, exposure time, and contact area must be carefully balanced.



Gas disinfection is not meant to penetrate the egg or react with other substances in the environment. Instead, it creates an air solution with a specific concentration of active ingredient that contacts the egg surface.

Dosage should consider the room's free air volume — the more eggs present, the less free air, meaning the effective concentration changes even with the same product dose.

Tips for better gas disinfection

1 The more compact the eggs, the lower the airflow speed, to prevent air bouncing back.

2 The more compact the eggs, the less product should be used, to avoid overdosing the outer eggs.

3 The more compact the eggs, the longer the exposure time should be, to ensure all eggs are reached.

Get to know your enemy

Focus on the problem

Gas diffusion

Air flow, speed and dosage

Protect yourself

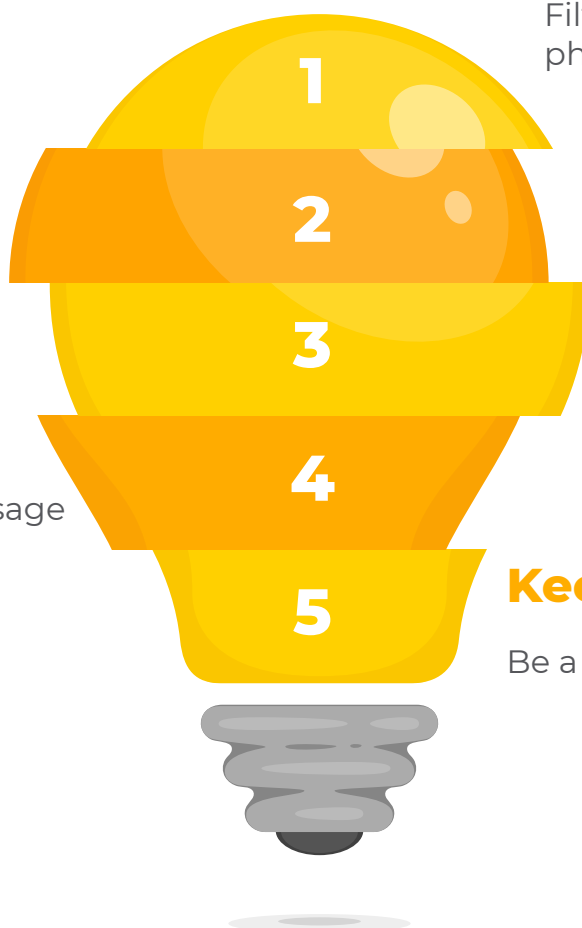
Filters and physical barriers

Apply PTPL

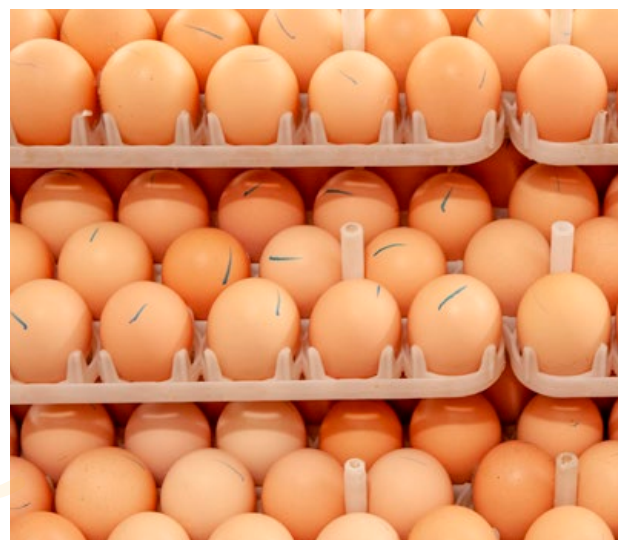
Balance intensity of each factor

Keep learning

Be a technology adopter!



With these measures in place, you will keep your hatchery better protected against all types of microorganisms.





LOHMANN BREEDERS

Imprint

Editor

LOHMANN BREEDERS GmbH

Am Seedeich 9-11

27472 Cuxhaven, Germany

Phone: + 49 (0) 47 21 505-0

Fax: + 49 (0) 47 21 505-222

www.lohmann-breeders.com

E-mail: info@lohmann-breeders.com