







KAT PRODUCTION SYSTEM: OVERVIEW AND FIELD RESULTS IN SPAIN



Introduction to the KAT Production System

The KAT system (Kontrollierte Alternative Tierhaltungsformen) is one of the most established certification schemes for alternative egg production in Europe. Originating in Germany, its purpose is to ensure traceability, animal welfare, feed control, and production transparency across free-range, barn, and organic systems.

KAT requires:

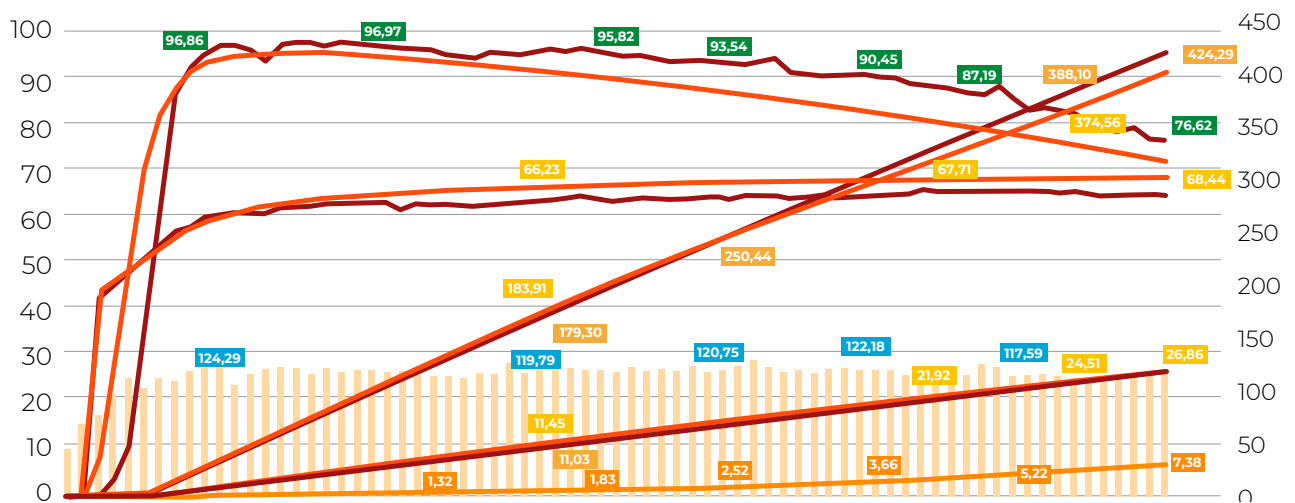
-  Hens are kept with intact beaks (no beak treatment).
-  Strict traceability from feed mill to packing station
-  Clear feed composition control and documentation
-  Compliance with welfare standards (space allowance, enrichment, outdoor access depending on category)
-  Regular audits and data reporting
-  Monitoring of production parameters to ensure consistency and welfare compliance

Spain has shown increasing interest in this system due to its growing market for certified welfare eggs and alignment with EU consumer expectations.

Results from the Marcopolo Farm (Eurovo Group) – LOHMANN BROWN-CLASSIC Flock

The flock of **LOHMANN BROWN-CLASSIC** belongs to Marcopolo, the Spanish subsidiary of Eurovo. The farm is certified under the KAT scheme, with a production capacity of **71.700 hens**. The results show an excellent cumulative production of **424.29 eggs** per hen housed at **90 weeks of age**, representing **+13 eggs** compared to the breed standard.

MARCOPOLO PINETA (EUROVO SPAIN) LOHMANN BROWN CLASSIC - 71.700 LAYERS NTO 2023 cd 1 (KAT)



▲ **Graphic 1. Evolution kat production system.**



Production Performance

- ✓ **Peak production** reached higher levels vs. std of LOHMANN BROWN-CLASSIC.
- ✓ **Egg mass and egg weight** exceeded expected curves, with stable progression.
- ✓ **An average** Feed consumption of 118g/hen/day remained consistent with standard KAT and welfare-friendly production systems, where feed quality control are critical.
- ✓ **Mortality (%)** remained within the acceptable limits for KAT-certified systems and was fully aligned with the expected standards for the LOHMANN BROWN-CLASSIC line, indicating good adaptation to both the housing conditions and the welfare requirements of the system.

Conclusions and Technical Implications

The collaboration between Marcopolo and Ibertec (LOHMANN Genetics) demonstrates that:

LOHMANN BROWN-CLASSIC, through close collaboration between both companies, is able to clearly surpass the performance standards of the line, even under highly demanding certification systems such as KAT.

Welfare-oriented systems do not necessarily compromise productivity when supported by strong nutritional programs, good management, and robust data monitoring.

The collaboration between two major operators, Marcopolo and Ibertec (the distributor of LOHMANN BREEDERS in Spain), demonstrates that even under highly demanding systems such as KAT, LOHMANN BROWN-CLASSIC is capable of achieving results that meet, and even surpass, the performance standards of the line.

