



TOOL
BOX
by LOHMANN

VETERINARY

TYPES OF SALMONELLA IN POULTRY

Birds can be symptom-free carriers – a hidden food safety risk.



Host-specific (e.g. *S. Gallinarum*):

Cause disease & mortality in birds.



Non-host-specific (e.g. *S. Enteritidis*):

Rarely harm birds but risk human health via eggs/meat



Why it's a challenge:

Often undetected but causes hatching losses, trade issues & consumer risk.



BREEDING FOR SUCCESS... TOGETHER
www.lohmann-breeders.com



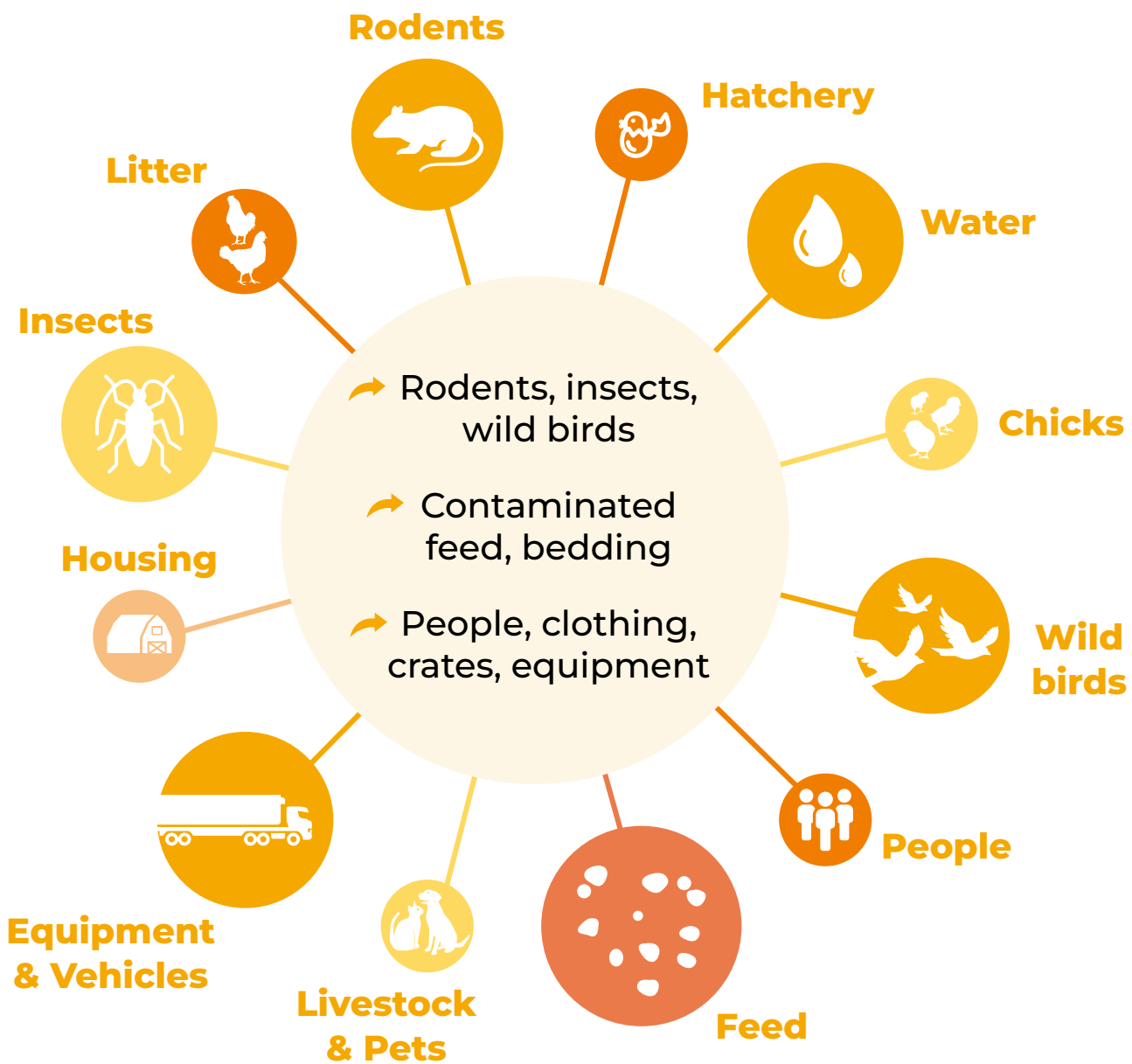
LOHMANN
BREEDERS
It's the egg



TOOL
BOX
by LOHMANN

VETERINARY

HOW SALMONELLA ENTERS



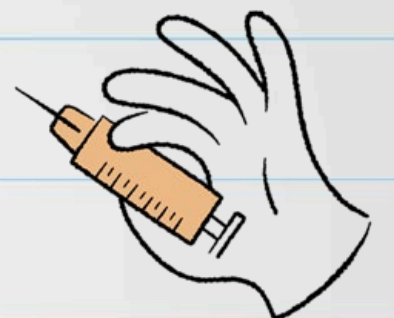
Prevention Essentials

- ✓ Strong biosecurity & hygiene
- ✓ Pest control
- ✓ Regular risk checks
- ✓ Clean, Salmonella-free feed

Vaccination Matters

- Live/inactivated vaccines for S. Enteritidis & S. Typhimurium
- Early application is key
- Follow local regulations

Still test flocks — use serology, PCR, culture



BREEDING FOR SUCCESS... TOGETHER
www.lohmann-breeders.com



**LOHMANN
BREEDERS**
It's the egg